

Switch disconnecter 125 A, Size 2, 4-pole Front operating mechanism left Complete unit with direct operating mechanism gray Box terminal



Model	
product brand name	SENTRON
product designation	3KD switch disconnecter
design of the product	Switch
display version / for switch position indicator manual operation	ON-OFF-TEST
design of the operating mechanism	Long rotary knob
type of the driving mechanism	Front operating mechanism
type of the driving mechanism / motor drive	No

General technical data	
number of poles	4
type of device	fixed mounting
size of switch disconnecter	2
mechanical service life (switching cycles) / typical	15 000
electrical endurance (switching cycles)	
• at AC-23 A / at 690 V	1 500
• at DC-23 A / at 440 V	1 000

<ul style="list-style-type: none"> • I2t value / with closed switch / at 1000 V / for combination switch +gG/aM SITOR fuse / maximum 	19 815 A ² ·s
<ul style="list-style-type: none"> • I2t value / of the fuse / at 500 V / maximum permissible 	223 005 A ² ·s
<ul style="list-style-type: none"> • I2t value / of the gG fuse / at 690 V / maximum permissible 	226 005 A ² ·s
<ul style="list-style-type: none"> • I2t value / of the gG/aM SITOR fuse / at 1000 V / maximum permissible 	48 000 A ² ·s
<ul style="list-style-type: none"> • I2t value / of the molded case circuit breaker / at 415 V / maximum permissible 	560 000 A ² ·s
position / of the switch operating mechanism	at the left end
overvoltage in percent / relative to the operating voltage / at AC / at 400, 500, 690 V / at 50/60 Hz	10 %
overvoltage category	III
degree of pollution	3

Voltage

operating voltage / with current paths in series <ul style="list-style-type: none"> • with degree of pollution 2 / at DC / rated value • with degree of pollution 3 / at DC / rated value 	440 V / 3
insulation voltage <ul style="list-style-type: none"> • rated value 	1 000 V
surge voltage resistance / rated value	8 kV

Supply voltage

operating current / at AC / rated value	125 A
operating voltage <ul style="list-style-type: none"> • at AC / at 50/60 Hz / rated value 	1 000 V

Protection class

protection class IP	IP20
protection class IP <ul style="list-style-type: none"> • with closed switch / with cover or cable lug cover • on the front 	IP20
	IP20

Dissipation

power loss [W] <ul style="list-style-type: none"> • with conventional rated thermal current / per pole • with conventional rated thermal current / per device • for rated value of the current / at AC / in hot operating state / per pole 	3.2 W
	12.8 W
	3.2 W

Current

• operating current / at AC-23 A / at 690 V / rated value	125 A
• operating current / at AC-23 A / at 500 V / rated value	125 A
• operating current / at AC-23 A / at 400 V / rated value	125 A
• operating current / at AC-22 A / at 690 V / rated value	125 A
• operating current / at AC-22 A / at 500 V / rated value	125 A
• operating current / at AC-22 A / at 400 V / rated value	125 A
• operating current / at AC-20 A / at 1000 V / maximum	125 A
• operating current / at AC-21 A / at 400 V / rated value	125 A
• operating current / at AC-21 A / at 500 V / rated value	125 A
• operating current / at AC-21 A / at 690 V / rated value	125 A
• operating current / at AC-23 A / at 500 V / at 50/60 Hz / rated value / maximum	125 A
• operating current / at AC-22 A / at 500 V / at 50/60 Hz / rated value / maximum	125 A
• operating current / at AC-22 A / at 400 V / at 50/60 Hz / rated value / maximum	125 A
• operating current / at AC-22 A / at 690 V / at 50/60 Hz / rated value / maximum	125 A
• operating current / at AC-23 A / at 400 V / at 50/60 Hz / rated value / maximum	125 A
• operating current / at AC-23 A / at 690 V / at 50/60 Hz / rated value / maximum	125 A
continuous current / of upstream fuse / at 500 V and 690 V / rated value	250 A
continuous current / of upstream fuse / at 1000 V / rated value	250 A
continuous current / of upstream molded case circuit breaker / at 415 V / rated value	160 A
operating current / at DC / rated value	125 A
let-through current / of the fuse / at 500 V / maximum permissible	25 700 A
let-through current / of the gG fuse / at 690 V / maximum permissible	29 500 A
let-through current / of the aM fuse / at 690 V / maximum permissible	32 900 A

let-through current / of the gG/aM SITOR fuse / at 1000 V / maximum permissible	12 500 A
let-through current / of the molded case circuit breaker / at 415 V / maximum permissible	22 500 A
short-time withstand current (I _{cw})	
<ul style="list-style-type: none"> at 400 V AC / limited to 0.15 s / rated value 	15 kA

Main circuit

operating power	
<ul style="list-style-type: none"> at AC-23 A / at 400 V / at 50/60 Hz / rated value 	55 kW
<ul style="list-style-type: none"> at AC-23 A / at 500 V / rated value 	75 kW
<ul style="list-style-type: none"> at AC-23 A / at 690 V / at 50/60 Hz / rated value 	110 kW
operating current / rated value	125 A

Auxiliary circuit

number of connected NC contacts / for auxiliary contacts	0
number of connected NO contacts / for auxiliary contacts	0
number of connected CO contacts / for auxiliary contacts	0
number of CO contacts / for auxiliary contacts	4
number of NC contacts / for auxiliary contacts	0
number of NO contacts / for auxiliary contacts	0

Suitability

suitability for use	
<ul style="list-style-type: none"> main switch 	Yes
<ul style="list-style-type: none"> switch disconnecter 	Yes
<ul style="list-style-type: none"> EMERGENCY OFF switch 	No
<ul style="list-style-type: none"> safety switch 	Yes
<ul style="list-style-type: none"> maintenance/repair switch 	Yes

Product details

product feature / interlock	Yes
product component	
<ul style="list-style-type: none"> trip indicator 	No
<ul style="list-style-type: none"> voltage trigger 	No
<ul style="list-style-type: none"> undervoltage release 	No
<ul style="list-style-type: none"> undervoltage release with leading contact 	No
product extension / auxiliary switch	Yes
product extension / optional	
<ul style="list-style-type: none"> motor drive 	No
<ul style="list-style-type: none"> voltage trigger 	No

Short circuit

short-time withstand current (I _{cw}) / at AC 1000 V/DC 440 V / limited to 1 s / rated value	4 kA
short-circuit current making capacity (I _{cm})	
<ul style="list-style-type: none"> • for switch disconnector / at 400 V AC / without fuse link / rated value / minimum 	30 kA
<ul style="list-style-type: none"> • for switch disconnector / at 1000 V AC / without fuse link / rated value / minimum 	12 kA
<ul style="list-style-type: none"> • for switch disconnector / at DC 440 V / without fuse link / rated value / minimum 	12 kA
<ul style="list-style-type: none"> • for switch disconnector / without fuse link / rated value / minimum 	12 kA
conditional short-circuit current / with line-side fuse protection	
<ul style="list-style-type: none"> • at 415 V / by molded case circuit breaker / rated value 	65 kA
<ul style="list-style-type: none"> • at 500 V / by gG fuse / rated value 	100 kA
<ul style="list-style-type: none"> • at 690 V / by gG fuse / rated value 	100 kA

Connections

type of connectable conductor cross-sections	
<ul style="list-style-type: none"> • for copper busbar 	'1 x (3 x 14 mm ²)
type of connectable conductor cross-sections / for copper conductor	
<ul style="list-style-type: none"> • solid 	1x (2.5 ... 16 mm ²)
<ul style="list-style-type: none"> • finely stranded / with core end processing 	1x (2.5 ... 70 mm ²)
<ul style="list-style-type: none"> • stranded 	1x (10 ... 70 mm ²)
type of electrical connection	
<ul style="list-style-type: none"> • for main current circuit 	box terminal

Mechanical Design

height	126 mm
width	148 mm
depth	97 mm
mounting type	Screw fixing and standard rail mounting 35 mm
mounting type	
<ul style="list-style-type: none"> • front mounting with 4-hole attachment 	No
<ul style="list-style-type: none"> • front mounting with central attachment 	No
<ul style="list-style-type: none"> • rail mounting 	Yes
mounting position	any
net weight	1 494 g

Environmental conditions

ambient temperature / during operation	
<ul style="list-style-type: none"> • minimum 	-25 °C
<ul style="list-style-type: none"> • maximum 	70 °C

ambient temperature / during storage

- minimum
- maximum

-50 °C

80 °C

Certificates

reference code

- acc. to DIN EN 61346-2
- acc. to DIN EN 81346-2

Q

Q

General Product Approval

Declaration of
Conformity

Shipping Ap-
proval

other



CCC



VDE

[Miscellaneous](#)



EG-Konf.



LRS

[Miscellaneous](#)

Further information

Information- and Downloadcenter (Catalogs, Brochures,...)

<http://www.siemens.com/lowvoltage/catalogs>

Industry Mall (Online ordering system)

<https://mall.industry.siemens.com/mall/en/en/Catalog/product?mlfb=3KD3242-2NE10-0>

Service&Support (Manuals, Certificates, Characteristics, FAQs,...)

<https://support.industry.siemens.com/cs/ww/en/ps/3KD3242-2NE10-0>

Image database (product images, 2D dimension drawings, 3D models, device circuit diagrams, ...)

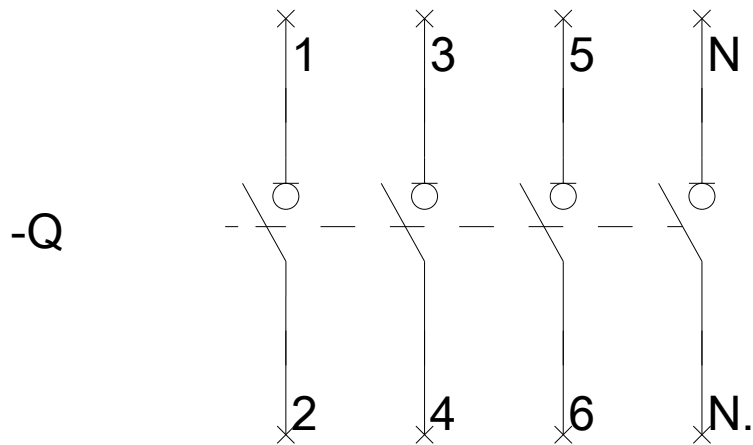
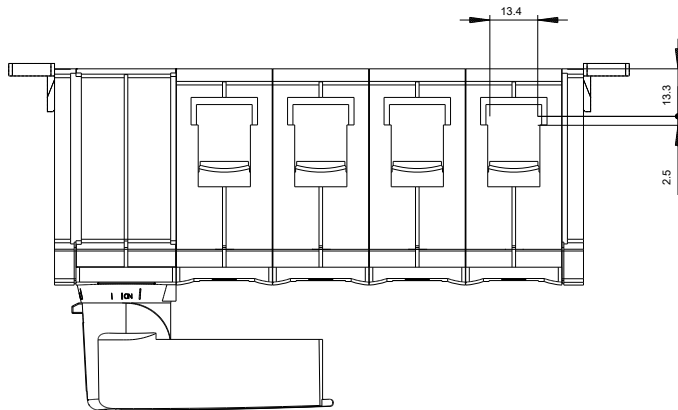
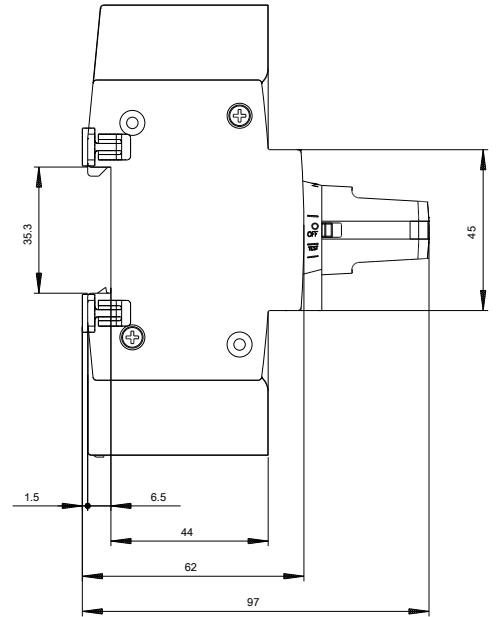
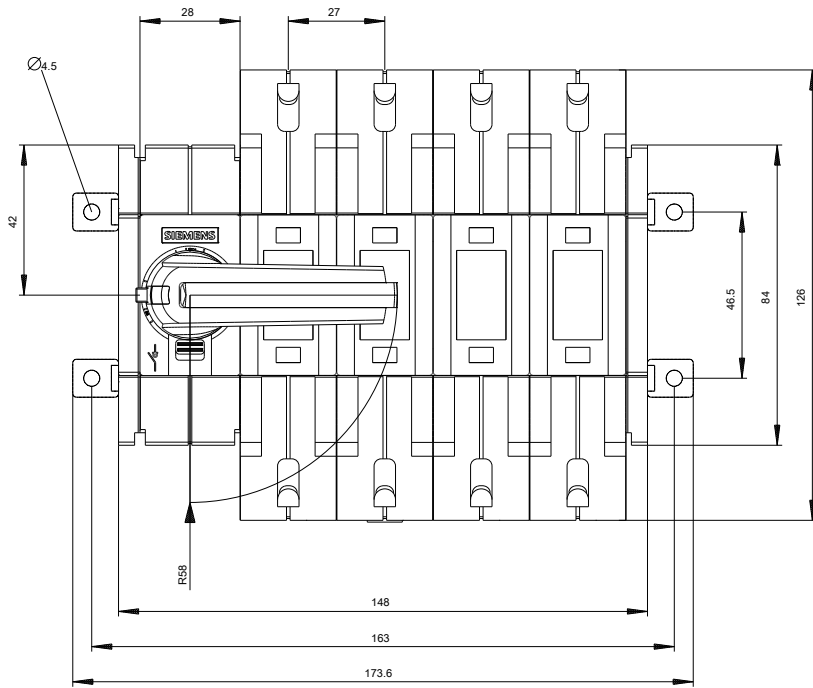
http://www.automation.siemens.com/bilddb/cax_en.aspx?mlfb=3KD3242-2NE10-0

CAX-Online-Generator

<http://www.siemens.com/cax>

Tender specifications

<http://www.siemens.com/specifications>



-CR

