



### 311SX3-T



*Actual product appearance may vary.*

**SX Series Subminiature Basic Switch, Single Pole Double Throw (SPDT), 250 Vac, 5 A, Straight Lever Actuator, Solder Termination**

#### Features

- Long operating life
- Elongated mounting hole for easier, more accurate mounting
- Choice of actuation (plunger, as well as a variety of integral and auxiliary actuators)
- Choice of electrical termination (solder, quick connect, PCB)
- Choice of operating characteristics
- Optional series constructions available (gold contacts for low energy switching, bifurcated gold contacts for maximum reliability, power load switching capability to 7 A)
- MIL-PFR-8805 qualified listings available

#### Potential Applications

- Aerospace
- Appliances
- Vending machines
- Timing devices
- Office equipment
- Computer/business equipment
- Test instruments
- Medical/dental equipment
- Communications equipment
- HVAC equipment
- Manually operated devices
- Valves

#### Description

MICRO SWITCH™ SX Series subminiature basic switches are used for simple or precision on/off application needs. They are small, precision snap-action switches that are ideal where savings in space and weight are important.

Product Specifications	
Switch Type	Subminiature 8,89 mm H x 5,08 mm W x 12,7 mm L [0.35 in H x 0.20 in W x 0.5 in L]
Sealed	No
Ampere Rating	5 A
Circuitry	Single Pole Double Throw (SPDT)
Actuator	Straight Lever
Termination	Solder
Operating Temperature Range	-55 °C to 125 °C [-67 °F to 257 °F]
Voltage	250 Vac
Approvals	CE, CSA, UL
Actuator Length	24,5 mm [0.965 in]
Contact Type	Silver

Operating Force (O.F.)	0,20 N [0.71 oz] max.
Release Force (R.F.)	0,03 N [0.106 oz] min.
Pretravel (P.T.)	4,70 mm [0.185 in] max.
Overtravel (O.T.)	0,61 mm [0.024 in] min.
Differential Travel (D.T.)	1,52 mm [0.060 in] max.
Operating Position (O.P.)	7,75 mm $\pm$ 2,92 mm [0.305 in $\pm$ 0.115 in]
Housing Material	General Purpose Phenolic
High Temperature	204 °C [400 °F]
UL File #	E12252
CSA File #	LR41372
Agency Approvals and Standards	1054
Mounting Centers	4,83 mm [0.19 in]
Maximum Tightening Torque	0,22 N m [2.0 in lb]
Weight	1,36 g [0.003 lb]
Package Height	8,89 mm [0.35 in]
Package Width	5,0 mm [0.20 in]
Package Length	12,7 mm [0.50 in]
Availability	Global
UNSPSC Code	30211905
UNSPSC Commodity	30211905 Snap switches
Series Name	SX

---

# MICRO SWITCH

FREEMONT ILLINOIS, U.S.A.  
A DIVISION OF HONEYWELL

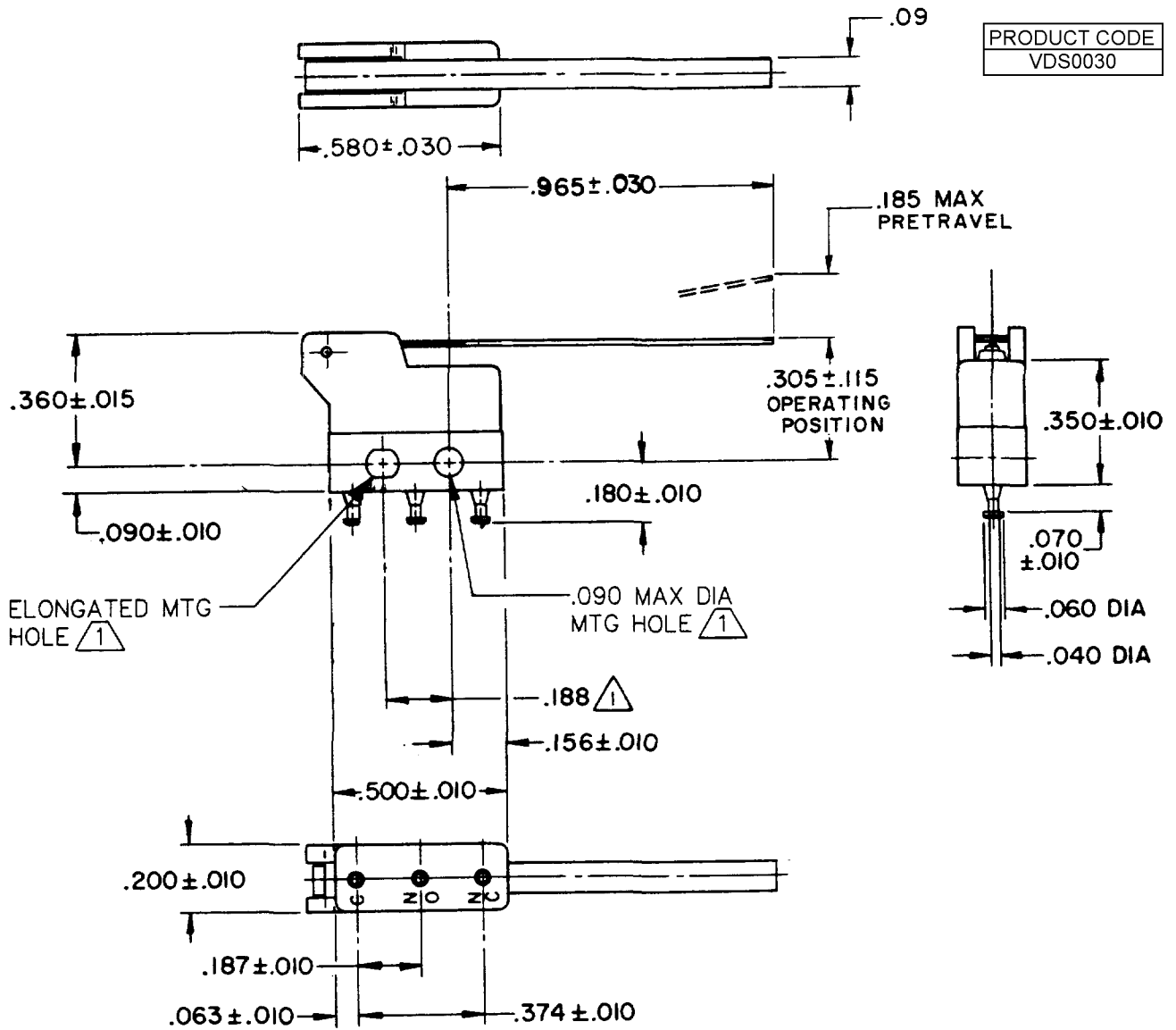
FED. MFG. CODE 91829

# SWITCH-BASIC

CATALOG LISTING  
**311SX3-T**

PRODUCT CODE  
VDS0030

M 311SX3-T PAGE 1 OF 1  
 DRAWING NUMBER  
 ISSUE 12  
 REVISIONS  
 B 0027064 S R H 18 MAR 70  
 C 0027302 M B S 15 APR 70  
 D 0027999 M B S 25 SEP 70  
 E 0028341 M J B 18 DEC 70  
 F 0046560 K A K 10 OCT 79  
 G 0046560 M J B 28 MAR 81  
 H 0072290 J C 7 JUN 82  
 J 0071574 J A L 4 JUN 92  
 K 201033 D L T 22 AUG 00  
 L 0012136 K R 11 APR 05  
 RASTER  
 FO-80378-1A  
 DRAWN  
 G F S 20 FEB 69  
 CHECK D C S  
 11 APR 05  
 AK  
 CHECK  
 1 MAY 69  
 20 FEB 69  
 11 APR 05



- NOTE -
- (1) MOUNTING HOLES WILL ACCEPT PINS OR SCREWS OF  $.087$  MAX DIA ON  $.188 \pm .002$  CENTERS
  - 2 - TERMINALS ARE PLATED FOR SOLDERING
  - 3 - SWITCH WILL WITHSTAND TEMPERATURE OF  $250^{\circ}$  F

THIS DRAWING COVERS A PROPRIETARY ITEM AND IS THE PROPERTY OF MICRO SWITCH, A DIVISION OF HONEYWELL. THIS DRAWING IS NOT TO BE COPIED OR USED WITHOUT THE APPROVAL OF MICRO SWITCH.

## CHARACTERISTICS

OPERATING FORCE --- 20 GRAM MAX  
 RELEASE FORCE --- 3 GRAM MIN  
 DIFFERENTIAL TRAVEL --- .060 MAX  
 OVERTRAVEL --- .027 MIN

## ELECTRICAL DATA

CONTACT ARRANGEMENT  
S P D T

28 VOLTS DC RATING  
 INDUCTIVE --- SEA LEVEL --- 3 AMP  
 50,000 FT --- 2 AMP  
 RESISTIVE --- SEA LEVEL --- 5 AMP  
 50,000 FT --- 4 AMP

115 VOLTS AC, 60 CPS  
 INDUCTIVE --- SEA LEVEL --- 5 AMP  
 RESISTIVE --- SEA LEVEL --- 5 AMP

SCALE 2 TO 1

DO NOT SCALE PRINT

UNLESS OTHERWISE NOTED

DIMENSIONS ARE IN INCHES

TOLERANCES ARE:

ONE PLACE (.01)  $\pm .030$   
 TWO PLACE (.00)  $\pm .015$   
 THREE PLACE (.000)  $\pm .005$   
 ANGLES  $\pm .005$

WEIGHT .003 LB MAX

APPROVALS

KEMA, CE

5A 250V ~ T125 5E4



UL, CSA

5A 250 VAC



BRAND L4L