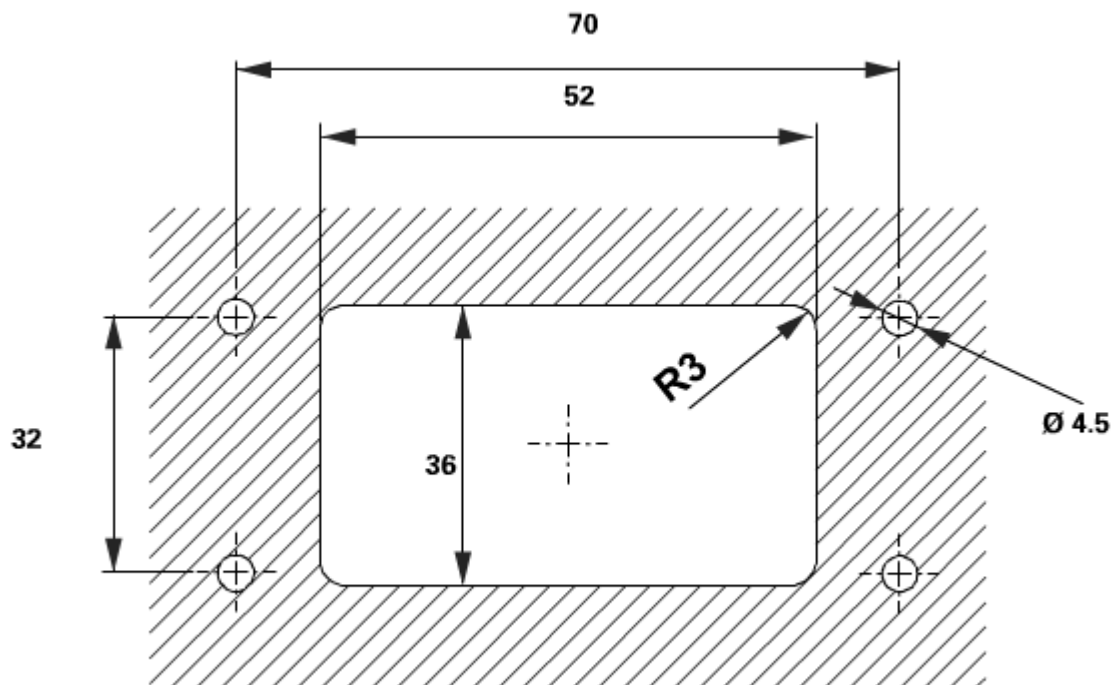
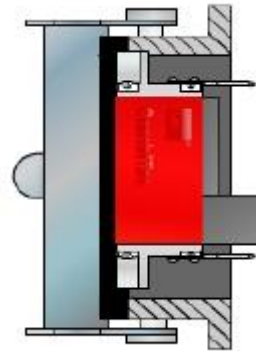
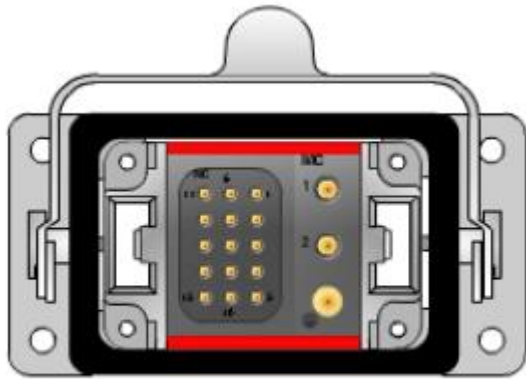


Module 34.7179 (Female) – IP65 Housing

Mating half: 34.7254 (Male 0°) or 34.90622 (Male 45°)

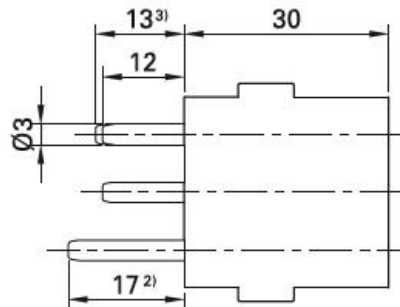


Carrier 1:

Pos No	Part No	Type	Designation	Conductor Cross Section	Rated Current (A)	Termination
1-2	33.0131	CT-BP3/2,5-4 AU	3mm Socket	2.5-4mm ² 14/12AWG	22-35	Crimp
3	33.0129	CT-BP3/2,5-4/PE AU	3mm Earth Socket	2.5-4mm ² 14/12AWG	*	Crimp

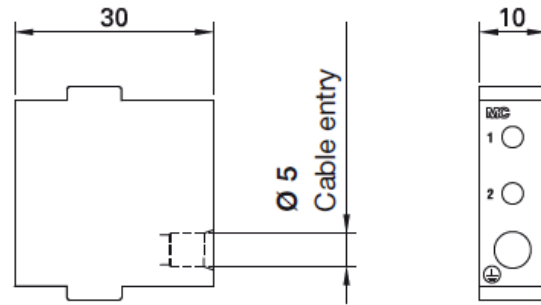

*Short circuit current 3s
 2.5mm²: 135A
 4mm²: 216A

CT-BP3...

CT-BP3/2,5-4/PE AU \oplus 

Technical data

Nominal-Ø socket/pin	3 mm
Max. sliding force per contact	4 N
Contact resistance	< 1.1 mΩ
Mating cycles	100,000
Vibrations	4.2 g/5 – 250 Hz (DIN EN 61373) 10 g/10 – 500 Hz (DIN EN 60068-2-6)
Resistance to shocks	30 g/18 ms (DIN EN 61373)

Multi-Contact**MC****STÄUBLI**CT-E3-2+PE **Technical data**

Number of poles	2 + 1 PE	
For contact diameter	3 mm	
Pollution degree / overvoltage category	2/CATII	3/CATIII
Rated voltage	1000 V AC/DC	400 V AC/DC
Degree of protection (socket front)	IP2X ¹⁾	
Clearances and creepage distance	IEC 60664-1	
Limiting temperature (IEC 61984), upper lower	+90 °C -40 °C	
Contact carrier material	EPTR	

Carrier 2:

Pos No	Part No	Type	Designation	Conductor Cross Section	Rated Current (A)	Termination
1-15	33.0143	CT-BP1ET/0,25-0,75 AU	1mm Socket	0.25mm ² -0.75mm ² 24-18AWG	2-5A	Crimp

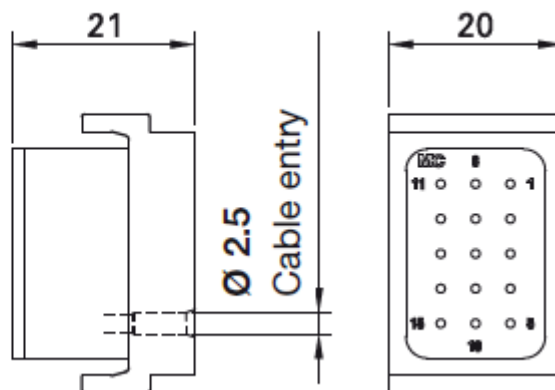
CT-BP1...



Technical data

	CT-BP1ET... & CT-B1ET...
Nominal-Ø socket/pin	1 mm
Max. sliding force per contact	0.5 N
Contact resistance	< 3 mΩ
Mating cycles	100,000
Vibrations	4.2 g/5 – 250 Hz (DIN EN 61373) 10 g/10 – 500 Hz (DIN EN 60068-2-6)
Resistance to shocks	30 g/18 ms (DIN EN 61373)

CT-E1-15/B



Technical data

Number of poles	15	
For contact diameter	1 mm	
Pollution degree / overvoltage category	2/CATII	3/CATIII
Rated voltage	300 V AC/DC	150 V AC/DC
Max. flow-soldering temperature	260 °C	
Max. flow-soldering time	3 s	
Degree of protection (socket front)	IP2X	
Clearances and creepage distance	IEC 60664-1	
Limiting temperature (IEC 61984), upper	+90 °C	
lower	-40 °C	
Contact carrier material	PA & EPTR	

Tooling:

RS Article	Part No	Type	Designation	For use with
	18.3806	MES-CZ-CT-3	Locator	3mm Sockets
	18.3010	ME-WZ 3	Insertion Tool	3mm Sockets
	18.3011	MBA-WZ 3	Extraction Tool	3mm Sockets
	18.3800	M-CZ	Crimp Pliers	1mm & 3mm Sockets
	18.3804	MES-CZ-CT-1	Locator	1mm Sockets
	33.3001	CT-E-WZ 1-9.5	Insertion Tool	1mm Sockets
	18.3001	MBA-WZ 1/1.2	Extraction Tool	1mm Sockets

See assembly instructions MA213-01.