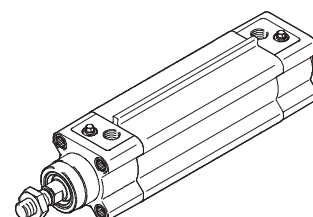
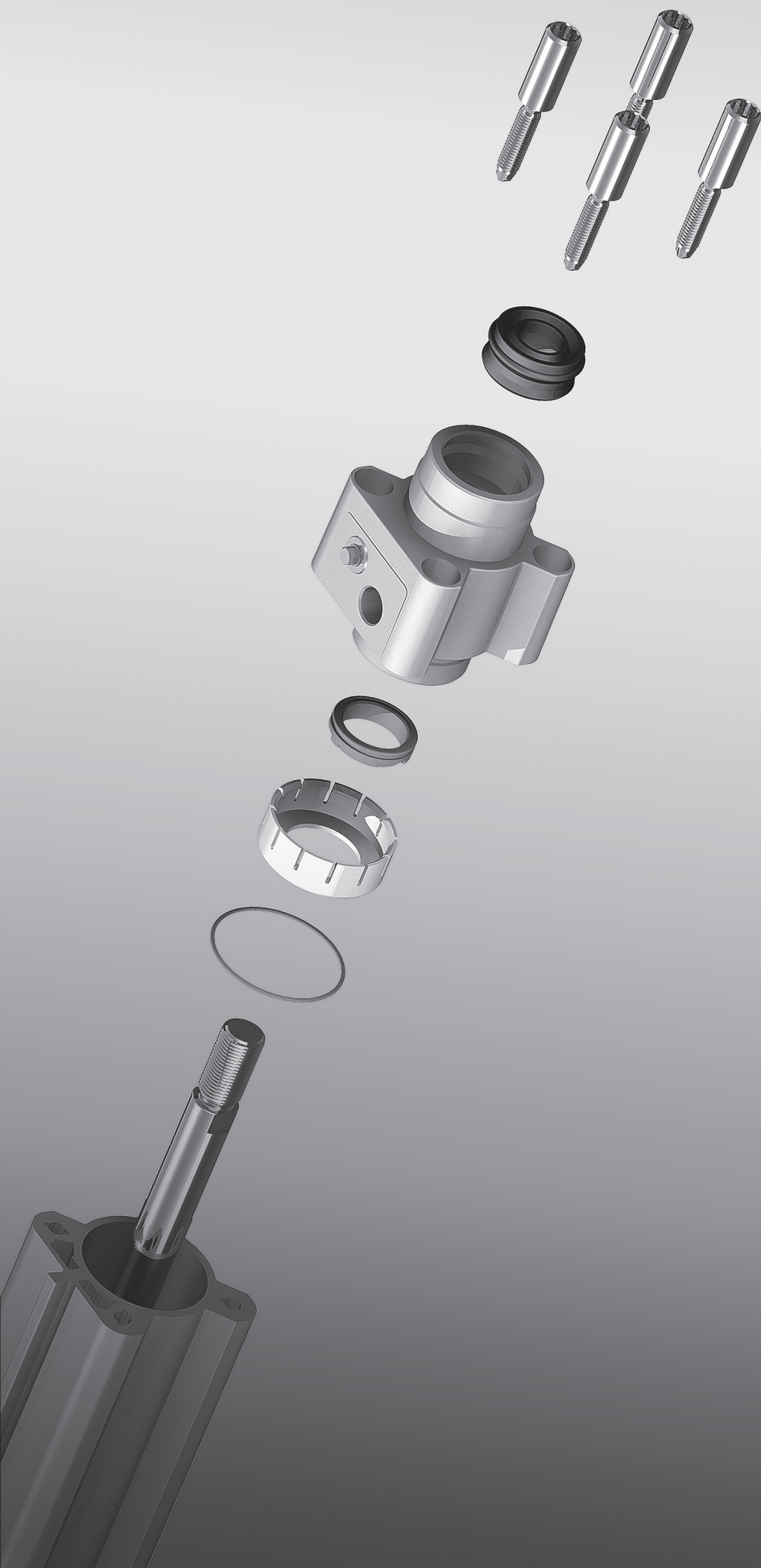


Standard cylinders to ISO 15552

DSBF-C

FESTO

Repair
instructions (en)



About this magazine

Version:
7DSBF-Cc_en (12.2022)

Copyright:
©Festo SE & Co. KG
Ruiter Straße 82
73734 Esslingen
Germany

Editorial team:
Spare Part Documentation and
Support

Phone:
+49 / 711 / 347-0

Fax:
+49 / 711 / 347-2144

E-mail:
service_international@festo.com

Internet:
www.festo.com

The reproduction, distribution or sale of this document or communication of its contents to others without express authorisation is prohibited. Offenders will be held liable for damages. All rights reserved in the event that a patent, utility model or design patent is registered.

All product designations and brand names used are the property of the owners and not explicitly identified as such.

All technical data are subject to change according to technical updates.

Foreword

These repair instructions are valid for the ISO cylinder listed on the title page to the exclusion of any liability claims.

The descriptions in these repair instructions may differ depending on the version and/or modification status of the ISO cylinder. The user must check this prior to carrying out the repair and take the deviations into consideration if necessary.

These repair instructions have been prepared with care.

Festo SE & Co. KG does not, however, accept liability for any errors in these repair instructions or their consequences. Likewise, no liability is accepted for direct or consequential damage resulting from incorrect use of the products.

Further information is given in [Chapter 8 on page 37](#).

The relevant regulations on occupational safety, safety engineering, and interference suppression as well as the stipulations contained in these repair instructions must be observed when working on the products.

Table of contents

1	Important information	6
1.1	About these repair instructions	6
1.2	Symbols used in these repair instructions	6
1.3	Text designations used in these repair instructions	7
1.4	General safety information	7
1.5	Technical requirements	8
1.6	Standards and test values	8
2	General product description	9
2.1	Functional description	9
2.2	Type code	9
2.3	Repair-relevant features	10
2.4	Orientation designations	11
2.5	Sizes and part numbers	11
3	Components list	12
3.1	DSBF-C-... / A3	12
3.2	DSBF-C-...-T1 / T4 / A1 and DSBF-C-L / U	14
3.3	DSBF-C-...-T3 / A2	16
4	Repair steps	18
4.1	Preparatory steps	18
4.2	Visual inspection	18
4.3	Repairing the ISO cylinder DSBF-C-... / A3	19
4.3.1	Requirements	19
4.3.2	Validity	19
4.3.3	Structure of the bearing cap	19
4.3.4	Removing the bearing and end caps	20
4.3.5	Replacing the piston components	20
4.3.6	Inserting the piston rod into the cylinder barrel	21
4.3.7	Repairing and attaching the bearing and end caps	21
4.4	Repairing the ISO cylinder DSBF-C-...-T1 / T4 / A1 and DSBF-C-L / U	24
4.4.1	Requirements	24
4.4.2	Validity	24
4.4.3	Structure of the bearing cap	24
4.4.4	Removing the bearing and end caps	25
4.4.5	Replacing the piston components	25
4.4.6	Inserting the piston rod into the cylinder barrel	26
4.4.7	Repairing and attaching the bearing and end caps	26
4.5	Repairing the ISO cylinder DSBF-C-...-T3 / A2	29
4.5.1	Requirements	29
4.5.2	Validity	29
4.5.3	Structure of the bearing cap	29
4.5.4	Removing the bearing and end caps	30
4.5.5	Replacing the piston components	30
4.5.6	Inserting the piston rod into the cylinder barrel	31
4.5.7	Repairing and attaching the bearing and end caps	31

Table of contents

5	Cleaning and greasing	35
5.1	Cleaning	35
5.2	Greasing	35
	5.2.1 Thin grease film	35
	5.2.2 Grease reservoir	35
6	Maintenance and care	35
7	Tools	36
7.1	Standard tools	36
7.2	Special tools	36
8	Liability	37

1 Important information

1.1 About these repair instructions

This document contains important information about professional repair of the ISO cylinder of the type DSBF-C.

The ISO cylinder DSBF-C is fully repairable in the event of damage due to normal wear.

The entire ISO cylinder must be replaced in the event of damage to the cylinder barrel.

However, the costs of carrying out a repair must be considered in the case of larger defects.

Before carrying out a repair, the relevant chapter in these instructions must be read in full and followed consistently.

For reasons of clarity, these repair instructions do not contain all detailed information. The following documents should therefore also be available while performing repair work on the ISO cylinder:

- **Operating instructions**

Contains information about the operating elements and connections of the ISO cylinder, as well as information about its function, structure, application, installation, commissioning, maintenance and care, etc. This information is available on the Festo website (→ www.festo.com).

- **Spare parts documentation**

Contains an overview of the spare and wearing parts as well as information on their installation. This can be found in the online spare parts catalogue on the Festo website (→ www.festo.com/spareparts).

- **“Tools and repair accessories” information brochure**

Contains an overview of the available installation resources, e.g. lubricating greases, threadlocking agents, maintenance tools, etc. (resources for installation and maintenance). The brochure can be found in the online spare parts catalogue on the Festo website (→ [Tools and repair accessories.pdf](#)).

1.2 Symbols used in these repair instructions

Danger categories

The following symbols identify text passages which draw attention to specific hazards.



Warning



Caution

Marking special information

The following pictograms mark passages in the text which contain special information.



Note



Information



Environment

1.3 Text designations used in these repair instructions

- Activities that can be carried out in any order.
 - 1. Activities which should be carried out in the specified order.
 - General list
 - ➔ Reference to further information
- Underlined, blue text indicates a cross-reference or hyperlink that you can click on in the PDF.

1.4 General safety information



Caution

Risk of injury due to unintended switching on and unexpected movements.

- Ensure that the ISO cylinder is depressurised and protected against restarting before any repair or maintenance work is carried out.



Caution

The ISO cylinder may only be repaired by authorised and trained persons in accordance with the specifications in the technical documentation and using genuine spare parts.

Installation and repair by unauthorised and untrained persons, repairs using non-original spare parts or without the technical documentation required for installation and/or repair are dangerous and therefore not permitted.

Repairs must only be carried out in conjunction with these repair instructions and the respective device-specific operating instructions.



Caution

Lifting large loads can lead to permanent injury.

- The ISO cylinder must be lifted by several people or with suitable lifting gear, depending on its size and weight.



Note

- Observe the given tightening torques. If no special information is given the tightening torques given in the relevant standard apply to the screws, bolts and nuts used.
- Note the strength class of the screws, bolts and nuts!



Note

Carrying out repair work without the respective necessary technical documentation is dangerous, and therefore not permissible. Repairs must only be carried out in conjunction with these repair instructions and the respective operating instructions for the device, as well as the documents listed in [Chapter 1.1 on page 6](#).



In the event of damage caused by unauthorised manipulation, improper use or use of non-original spare parts, all warranty and liability claims against the manufacturer expire.



Instead of carrying out the repair yourself, your local Festo sales office offers the option of having the repair carried out by Festo.



Components and equipment replaced during repair must be disposed of in accordance with the relevant local environmental protection regulations.

1.5 Technical requirements



Note

The following instructions for safe and proper use must be observed:

- Observe the connection and ambient conditions specified in the technical data of the products and all the connected components. The product can only be operated in compliance with the relevant safety guidelines if you comply with the limit values and load limits (→ see enclosed documentation).
- The ISO cylinder must be in faultless technical condition.
- The ISO cylinder may only be operated in its original condition and without unauthorised modifications.
- The ISO cylinder is designed for industrial use.

1.6 Standards and test values

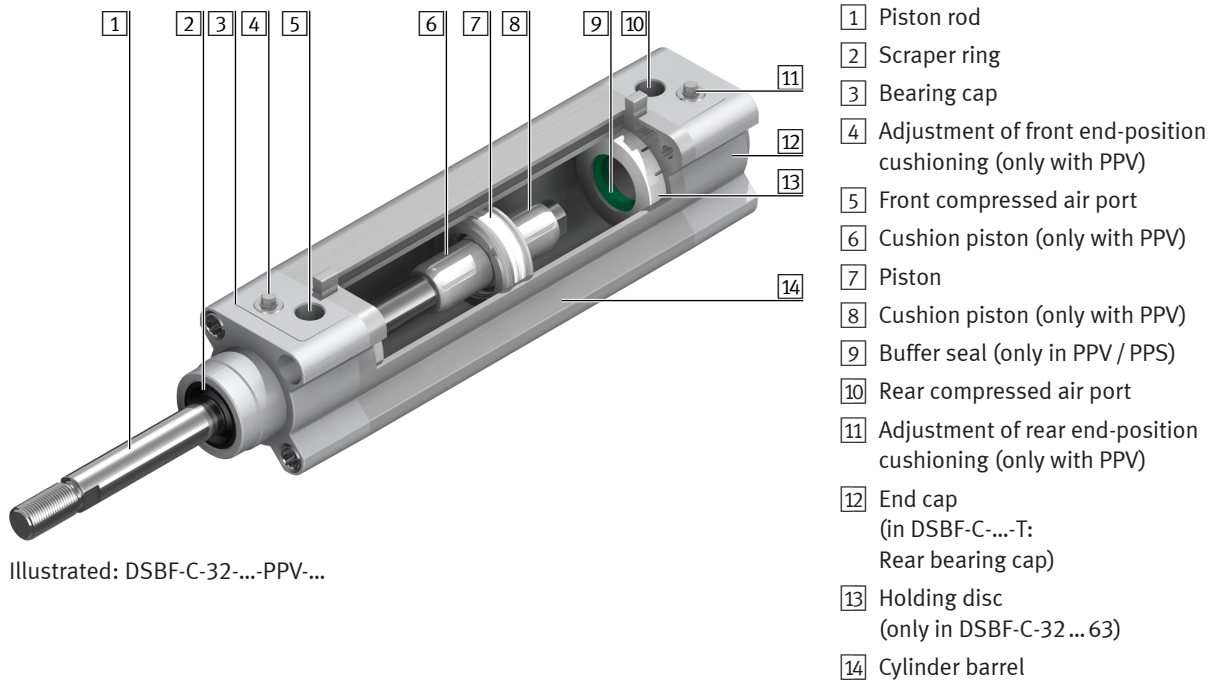


Standards and test values which products comply with and fulfil can be found in the "Technical data" sections of the enclosed documentation.

2 General product description

2.1 Functional description

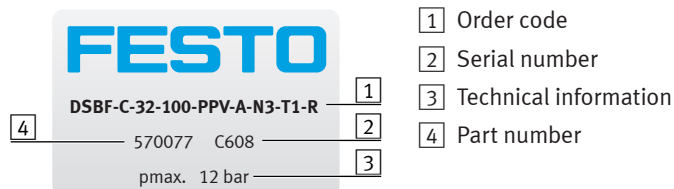
The piston moves in the cylinder barrel when the cylinder chamber is pressurised. The piston rod transfers the movement to the outside. The advanced piston rod is retracted again when the other cylinder chamber is pressurised.



2.2 Type code

The precise features of an ISO cylinder can be determined with the help of the product labelling on the cylinder. The order code is positioned directly beneath the Festo logo and describes the ISO cylinder's features separated by a hyphen "-".

Example:



The order code on the product labelling provides the following information:

DSBF-C	ISO cylinder of the type DSBF-C
32	Size: Piston diameter 32 mm
100	Stroke 100 mm
PPV	Adjustable end-position cushioning
A	Position sensing option (for proximity switch)
N3	Conforms to ISO 15552
T1	Heat-resistant seals 0 up to +120 °C (→ Chapter 2.3 on page 9)
R	Mounting rail for sensors



A list and description of all possible equipment features of the ISO cylinder can be found on the data sheet. The data sheet is available on the Festo website (→ www.festo.com).

2.3 Repair-relevant features

The ISO cylinder is equipped with repair-relevant and other, optional features.

Repair-relevant features require a different repair procedure.

The repair-relevant features are listed in the table with a reference to the corresponding repair description.

Bearing cap variants and repair-relevant features		Other optional features	Page
	DSBF-C-... Standard version, without repair-relevant feature	P, PPV, PPS, T, F, A, N3, EX4, ...E, ...L, R	19
		DSBF-C-...- A3 Suitable for unlubricated operation	P, PPV, PPS, T, F, A, N3, ...E, ...L, R
	DSBF-C-...- T1 Heat-resistant seals 0 to +120 °C	P, PPV, T, F, A, N3, ...E, ...L, R	24
	DSBF-C-...- T4 Heat-resistant seals 0 to +150 °C		
	DSBF-C-...- A1 Increased chemical resistance		
	DSBF-C- L Low friction	P, PPV, PPS, F, A, N3, ...E, ...L, R not T1/T4/A1	
	DSBF-C- U Constant, slow movement		
	DSBF-C-...- T3 Resistant to low temperature –40 to +80 °C	P, PPV, PPS, T, F, A, N3, ...E, ...L, R	29
	DSBF-C-...- A2 Hard scraper	P, PPV, PPS, T, F, A, N3, EX4, ...E, ...L, R	

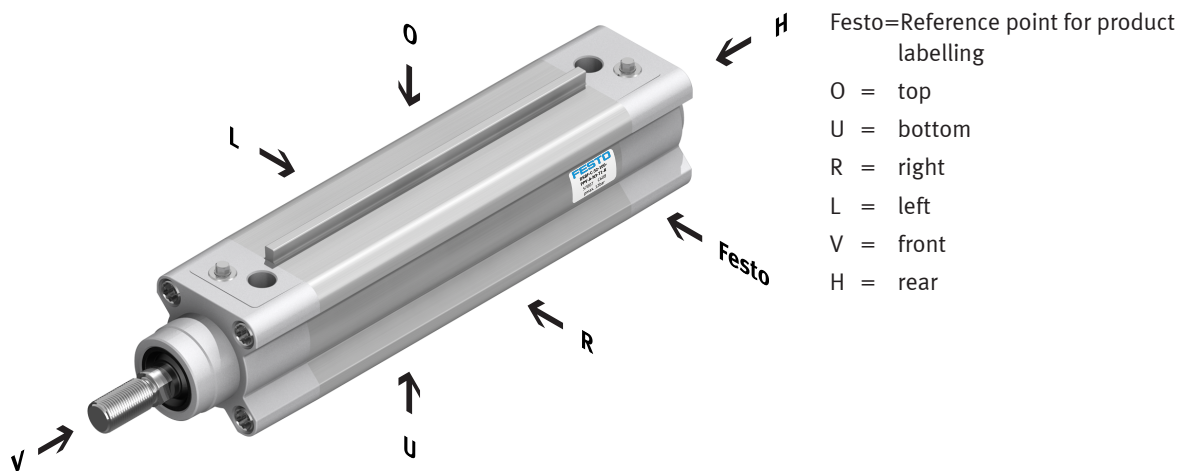
Explanation of the other, optional features

L	Running characteristic: low friction
U	Running characteristic: constant, slow movement
T	Through piston rod
F	Piston rod with female thread
P	Elastic cushioning rings/pads at both ends
PPV	Pneumatic cushioning, adjustable at both ends

- PPS** Pneumatic cushioning, self-adjusting at both ends
- A** Position sensing option (for proximity switch)
- N3** Corresponds to ISO 15552
- EX4** Approval II 2GD to EU Ex-Protection Directive (ATEX)
- ...E** Extended piston rod
- ...L** Extended piston rod thread
- R** Mounting rail for sensors

2.4 Orientation designations

This illustration provides an overview of the orientation designations of the ISO cylinder.



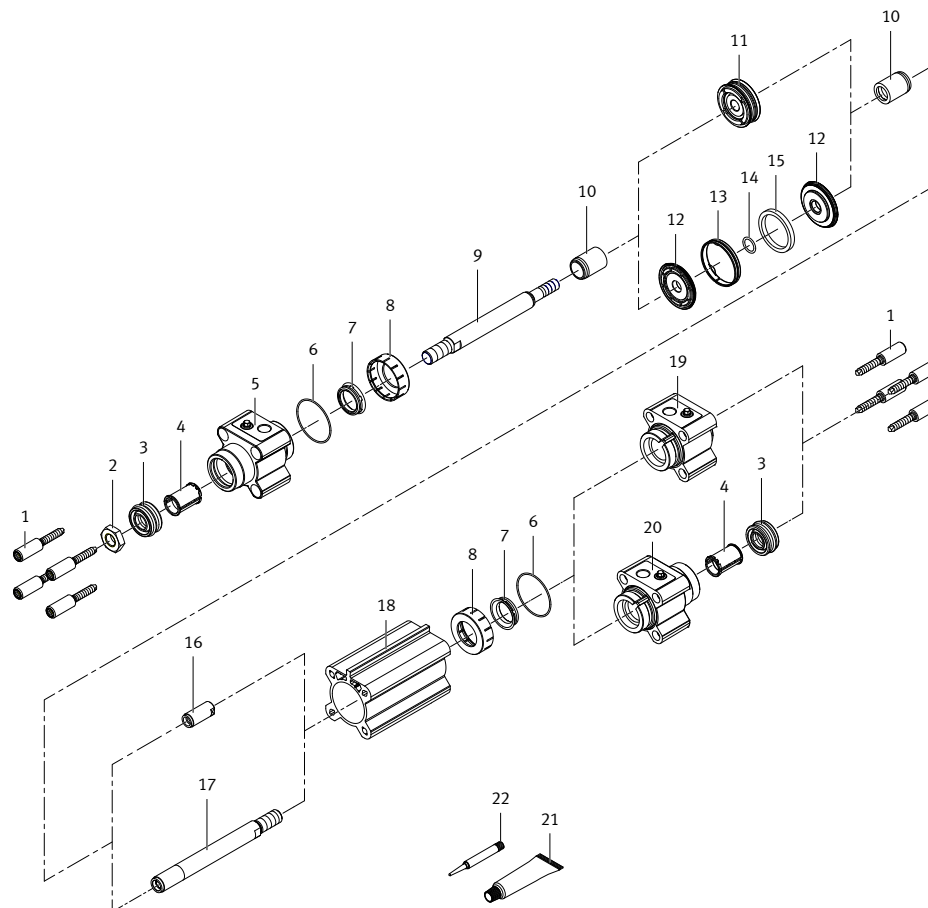
2.5 Sizes and part numbers

Size	Part number
ISO cylinder DSBF-C-...-32- -	570077
ISO cylinder DSBF-C-...-40- -	570078
ISO cylinder DSBF-C-...-50- -	570079
ISO cylinder DSBF-C-...-63- -	570080
ISO cylinder DSBF-C-...-80- -	570081
ISO cylinder DSBF-C-...-100- -	570082
ISO cylinder DSBF-C-...-125- -	1755169

You will find the complete overview of features, accessories, type codes, technical data and dimensions in the product catalogue or on the Festo website (→ www.festo.com).

3 Components list

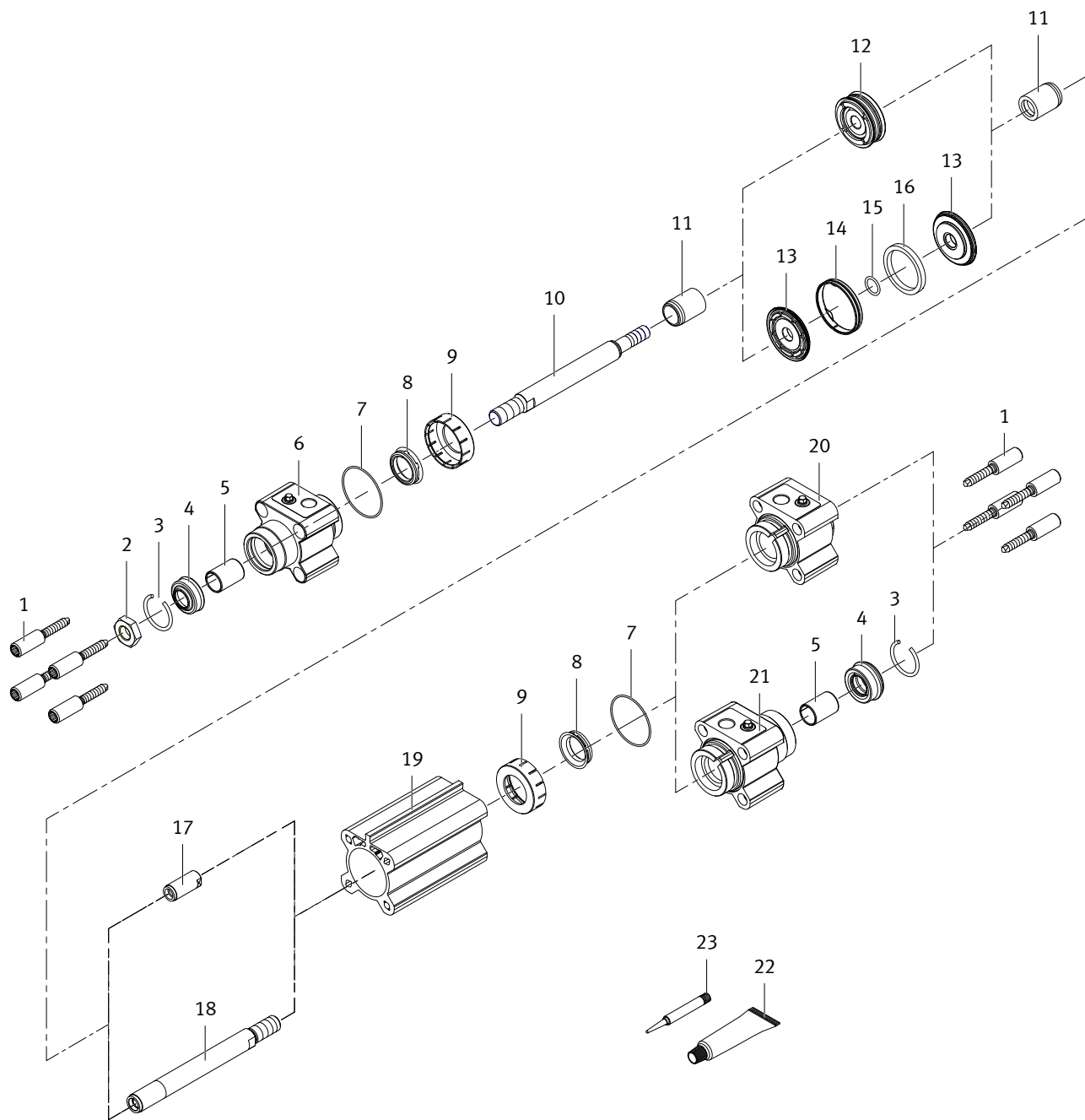
3.1 DSBF-C-... / A3



This diagram is intended to provide an overview of the individual components and an aid when ordering. For a more detailed assembly overview, refer to the online spare parts catalogue on the Festo website (➔ www.festo.com/spareparts).

DSBF-C... / A3		
Item	Designation	Note
1	Flange screw	
2	Hex nut	
3	Scraper ring	
4	Bearing (plastic) Bearing (metal)	only DSBF-C-...-L / U / EX4
5	Bearing cap	
6	O-ring	
7	Cushioning seal	only DSBF-C-...-PPV / PPS-...
8	Holding disc	only DSBF-C-32 / 40 / 50 / 63-...
9	Piston rod	
10	Cushioning boss / buffer sleeve	only DSBF-C-...-PPV / PPS-...
11	Piston	only DSBF-C-32 / 40 (from E7)-...
12	Piston washer	only DSBF-C-40 (up to E6) / 50 / 63 / 80 / 100 / 125-...
13	Guide band	only DSBF-C-40 (up to E6) / 50 / 63 / 80 / 100 / 125-...
14	O-ring	only DSBF-C-40 (up to E6) / 50 / 63 / 80 / 100 / 125-...
15	Ring magnet	only DSBF-C-40 (up to E6) / 50 / 63 / 80 / 100 / 125-...
16	Threaded coupling	
17	Rear piston rod	only DSBF-C-...-T-...
18	Cylinder barrel	
19	End cap	
20	Rear bearing cap	only DSBF-C-...-T-...
21	Lubricating grease	LUB-E1, silicone-free
22	Screw locking agent	

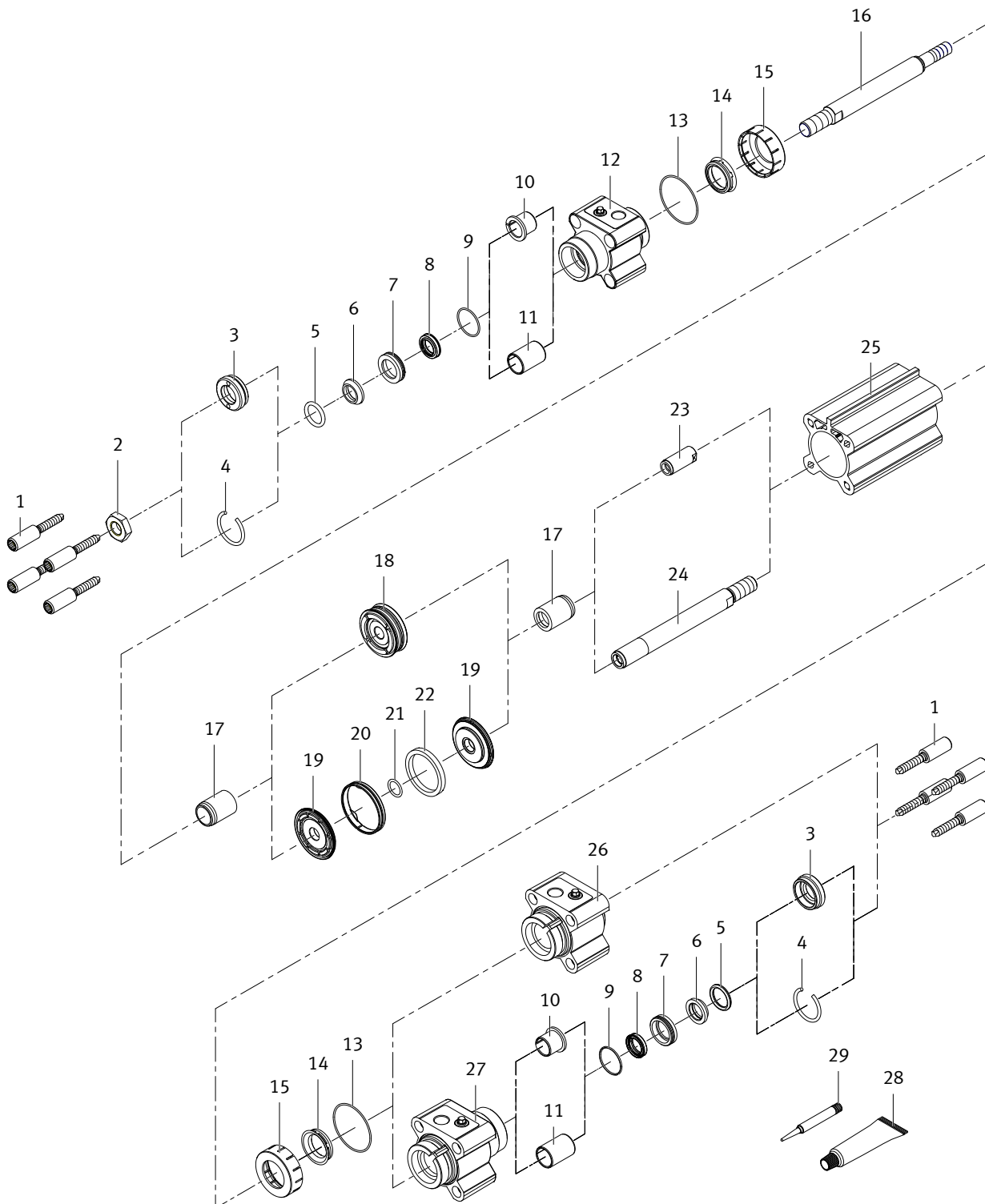
3.2 DSBF-C-...-T1 / T4 / A1 and DSBF-C-L / U



This diagram is intended to provide an overview of the individual components and an aid when ordering. For a more detailed assembly overview, refer to the online spare parts catalogue on the Festo website (→ www.festo.com/spareparts).

DSBF-C-...-T1 / T4 / A1 and DSBF-C-L / U		
Item	Designation	Note
1	Flange screw	
2	Hex nut	
3	Circlip	
4	Scraper ring	
5	Bearing (metal)	
6	Bearing cap	
7	O-ring	
8	Cushioning seal	only DSBF-C-...-PPV / PPS-...
9	Holding disc	only DSBF-C-32 / 40 / 50 / 63-...
10	Piston rod	
11	Cushioning boss / buffer sleeve	only DSBF-C-...-PPV / PPS-...
12	Piston	only DSBF-C-32 / 40 (from E7)-...
13	Piston washer	only DSBF-C-40 (up to E6) / 50 / 63 / 80 / 100 / 125-... DSBF-C-L / U-...-40-... multi-part pistons in all series
14	Guide band	only DSBF-C-40 (up to E6) / 50 / 63 / 80 / 100 / 125-...
15	O-ring	only DSBF-C-40 (up to E6) / 50 / 63 / 80 / 100 / 125-...
16	Ring magnet	only DSBF-C-40 (up to E6) / 50 / 63 / 80 / 100 / 125-...
17	Threaded coupling	
18	Rear piston rod	only DSBF-C-...-T-...
19	Cylinder barrel	
20	End cap	
21	Rear bearing cap	only DSBF-C-...-T-...
22	Lubricating grease	LUB-KL5, silicone-free
23	Screw locking agent	

3.3 DSBF-C...-T3 / A2



This diagram is intended to provide an overview of the individual components and an aid when ordering. For a more detailed assembly overview, refer to the online spare parts catalogue on the Festo website (➔ www.festo.com/spareparts).

DSBF-C-...-T3 / A2		
Item	Designation	Note
1	Flange screw	
2	Hex nut	
3	Screwed insert	only DSBF-C-32 / 40 / 50 / 63 / 80 / 100-...
4	Circlip	only DSBF-C-125-...
5	O-ring	
6	Excluder	
7	Insert sleeve	
8	Scraper ring	
9	O-ring	
10	Flanged bearing (plastic)	only DSBF-C-32 ... 100-...-T3
11	Bearing (plastic)	only DSBF-C-125-...-T3 / A2
	Bearing (metal)	only DSBF-C-32 ... 100-...-A2
12	Bearing cap	
13	O-ring	
14	Cushioning seal	only DSBF-C-...-PPV / PPS-...
15	Holding disc	only DSBF-C-32 / 40 / 50 / 63-...
16	Piston rod	
17	Cushioning boss / buffer sleeve	only DSBF-C-...-PPV / PPS-...
18	Piston	only DSBF-C-32 / 40 (from E7)-...
19	Piston washer	only DSBF-C-40 (up to E6) / 50 / 63 / 80 / 100 / 125-...
20	Guide band	only DSBF-C-40 (up to E6) / 50 / 63 / 80 / 100 / 125-...
21	O-ring	only DSBF-C-40 (up to E6) / 50 / 63 / 80 / 100 / 125-...
22	Ring magnet	only DSBF-C-40 (up to E6) / 50 / 63 / 80 / 100 / 125-...
23	Threaded coupling	
24	Rear piston rod	only DSBF-C-...-T-...
25	Cylinder barrel	
26	End cap	
27	Rear bearing cap	only DSBF-C-...-T-...
28	Lubricating grease	DSBF-C-...-T3: LUB-AL2, silicone free DSBF-C-...-A2: LUB-E1, silicone free
29	Screw locking agent	

4 Repair steps

Where possible, it is advisable to dismantle the ISO cylinder from the system entirely before carrying out the repair.

Before starting the repair, dismantle any attachments in accordance with the instructions in the accompanying operating instructions.

Keep your working environment clean and tidy.

Before dismantling the ISO cylinder the cause of the failure must be investigated to prevent repeated and premature failure. An ISO cylinder that has been used as intended will not normally exhibit any premature signs of failure.

This investigation is not necessary in the case of non-premature failure (fatigue time). However, the condition of the ISO cylinder (general condition, etc.) must always be checked.

In case of uncertainty, we recommend replacing all the components mentioned to rule out reciprocal effects during later operation.

In the event of premature failure of the ISO cylinder, the operating conditions should be examined more closely.

The following possibilities should be considered, among other things:

- **Overloading**
 - In case of overloading, the application parameters (load, speed) should be adjusted accordingly.
- **Ambient conditions/material resistance**
 - Check whether the ambient temperature is within the permissible range.
 - Check the chemical and physical ambient conditions for harmful substances, such as dust, abrasive particles, cooling lubricants, solvents, ozone, radiation, water-soluble substances, greases and oils, etc.



Note

The repair should preferably be carried out on a stable and flat work surface with storage for small parts. To prevent damage to sealing rims or guide surfaces, do not use pointed or sharp-edged assembly aids.



Note

Damage to the seals when dismantling the ISO cylinder:

- Use and replace all parts included in the set of wearing parts for the repair.



Only use the spare parts and assembly aids (grease, thread locking agent ...) provided in the set of wearing parts.

4.1 Preparatory steps



Warning

Pressure in the ISO cylinder can dissipate suddenly on opening the cylinder.

Risk of injuries due to the bearing cap unexpected moving away.

- Before starting the repair, completely depressurise the ISO cylinder: Remove the non-return valves and tubing from the cylinder.

4.2 Visual inspection

Check the ISO cylinder for visible damage that could impair its function: such as warping of the piston rod as well as deposits and scoring.

The complete ISO cylinder must be replaced if the cylinder barrel is significantly damaged

4.3 Repairing the ISO cylinder DSBF-C-... / A3

4.3.1 Requirements

- Preparatory work has been completed (→ [Chapter 4.1 on page 18](#)).
- Visual inspection has been performed (→ [Chapter 4.2 on page 18](#)).

4.3.2 Validity

This chapter applies to the repair of the following versions of the ISO cylinder:

- DSBF-C-... (**Standard version**; without the following features: L / U / T1 / T3 / T4 / A1 / A2)
- DSBF-C-...-A3

The different versions and features of the ISO cylinder are explained in [Chapter 2.3 on page 9](#).



The following repair steps describe and show the ISO cylinder with single-ended piston rod.

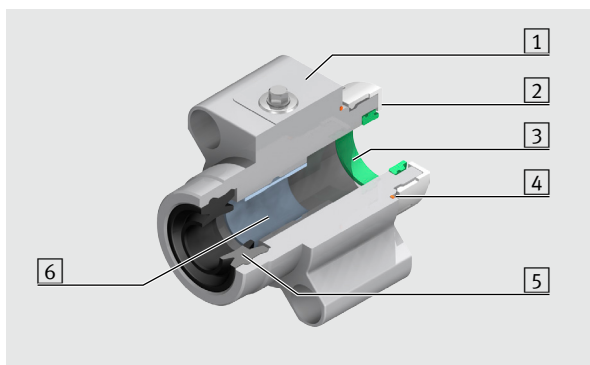
Differences in the **ISO cylinder with double-ended piston rod (DSBF-C-...-T)**:

- Note the differences shown in the components list (→ [Chapter 3.1 on page 12](#)).
- Take into consideration the following for the repair steps:
 - Instead of threaded coupling: Rear piston rod
 - Instead of end cap: Rear bearing cap
 - Also replace the scraper ring in the rear bearing cap.

4.3.3 Structure of the bearing cap



The bearing and end caps of the various sizes and versions differ and can differ from the illustrations shown in the following. Before each repair, the parts lists of the online spare parts catalogue on the Festo website must be used to determine the precise type of bearing and end cap and must be taken into consideration in the repair (→ www.festo.com/spareparts).

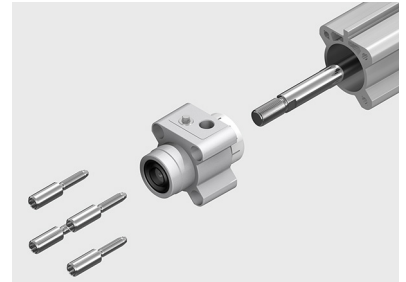


- 1 Bearing cap
- 2 Holding disc (only DSBF-C-32 ... 63)
- 3 Buffer seal (only DSBF-C-...-PPV / PPS)
- 4 O-ring
- 5 Scraper ring
- 6 Bearing (plastic).
In version DSBF-C-...-EX4: Bearing (metal).

Illustrated: DSBF-C-32-... (Standard version)

4.3.4 Removing the bearing and end caps

1. Unscrew the flange screws in the bearing and end caps.
2. Pull the bearing and end caps off the cylinder barrel and piston rod.



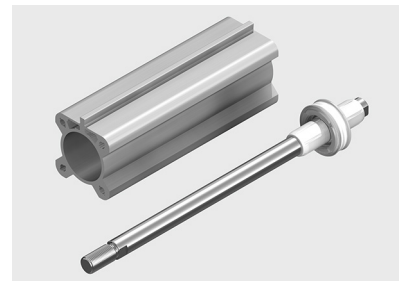
4.3.5 Replacing the piston components

1. Pull the piston rod out of the cylinder barrel.
2. Inspect the cylinder barrel and piston rod for damage.



Note

The entire ISO cylinder must be replaced if the cylinder barrel, particularly the bearing surface, shows signs of significant damage.

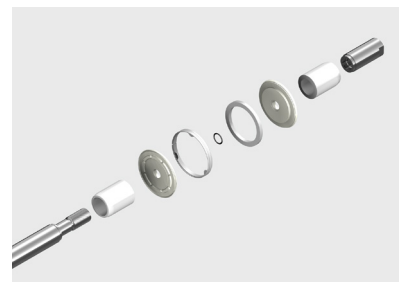


3. Unscrew the threaded coupling from the piston rod.



Note

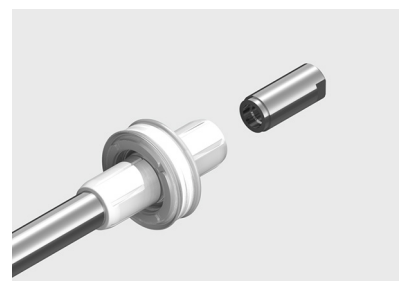
Note the order and alignment when pushing down the piston components. Recommendation: Place the piston components in such a way that correct assembly is ensured.



Illustrated: Multi-part piston

4. Push the piston components off the piston rod.
5. Clean the thread of the piston rod and threaded coupling to remove screw locking agent.
6. Replace the components contained in the set of wearing parts.
7. Push the piston components onto the piston rod, in the correct order and alignment.
8. Wet the threaded coupling with screw locking agent.
9. Screw the threaded coupling onto the piston rod and tighten with the appropriate torque.

Size	Tightening torque
DSBF-C-32	10 Nm
DSBF-C-40	20 Nm
DSBF-C-50	30 Nm
DSBF-C-63	40 Nm
DSBF-C-80	60 Nm
DSBF-C-100	60 Nm
DSBF-C-125	170 Nm



4.3.6 Inserting the piston rod into the cylinder barrel

1. Clean the cylinder barrel with a cloth (→ [Chapter 5.1 on page 35](#)).
2. Grease the following components with the grease included in the set of wearing parts:

Component	Greasing
Inside surface of cylinder barrel	apply a thin film ¹⁾ of grease
Surface of piston rod	apply a thin film ¹⁾ of grease
Piston seal lip rings ³⁾	apply thin film ¹⁾ of grease on the outside
Piston surface between lip rings (grease reservoir ²⁾)	fill uniformly with grease
Cushioning boss / buffer sleeve	apply thin film ¹⁾ of grease on the outside

¹⁾ → [Chapter 5.2.1 on page 35](#)

²⁾ → [Chapter 5.2.1 on page 35](#)

³⁾ Do not (completely) fill the installation groove of the lip rings / T-rings and reduction of the seal to the sealing lip (outside) with grease.

3. Position the piston flat against the front side of the cylinder barrel.



Note

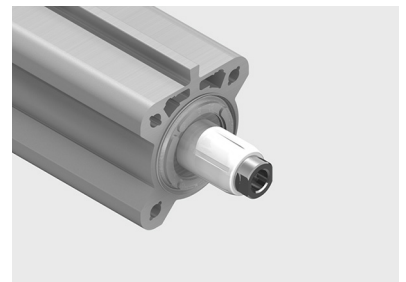
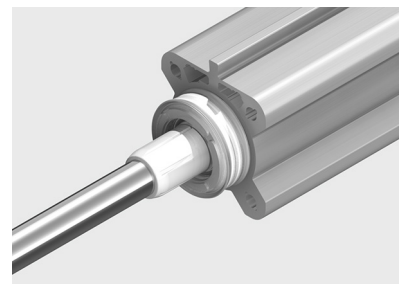
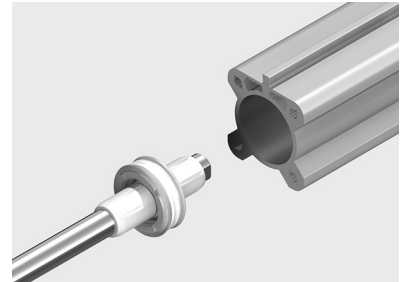
The sealing lip of the lip ring may not fold back against the inside of the piston.

If necessary, use a flat object without sharp edges to insert the lip ring into the cylinder barrel.

4. Insert the lip ring in the cylinder barrel by tilting and turning the ring slightly.
5. Push the piston completely through the cylinder barrel until the first lip ring protrudes from the end of the cylinder barrel.
6. Pull back the piston rod until the piston sits fully in the cylinder barrel.



This procedure ensures that the sealing lips of the two lip rings sit correctly in the cylinder barrel.



4.3.7 Repairing and attaching the bearing and end caps

1. Remove the scraper ring [1] from the bearing cap [3].
2. Remove the O-ring [6] from the bearing and end cap.
3. Pull the holding discs [5] off the bearing and end caps.
4. Remove the buffer seal [4] from the bearing and end caps.
5. Check the bearing [2] in the bearing cap.

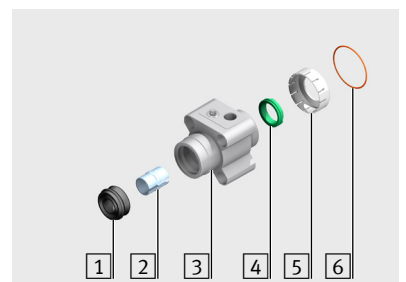


Note

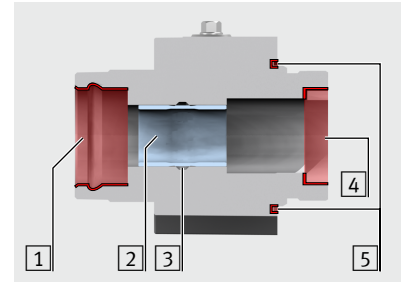
ISO cylinder with metal bearing (DSBF-C-...-L / U / EX4)

In case of identifiable damage to the bearing, which could impair its function (e.g. deposits or scoring), the bearing cap or bearing cap with end-position locking must be completely replaced.

6. **ISO cylinder with plastic bearing:**
If damaged, push the bearing out of the bearing cap.



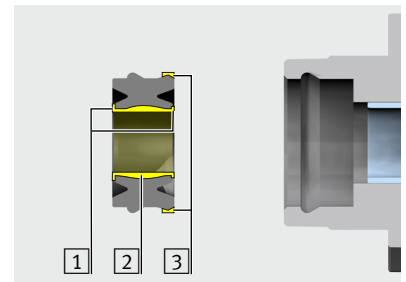
7. Clean the seat of the scraper ring [1].
8. Clean the seat of the buffer seal [4].
9. Clean the seat of the O-ring [5].
10. **ISO cylinder with plastic bearing:**
Push new bearing into the bearing cap until it latches into position.
11. Fill the grease reservoir in the plain bearing with grease and apply a thin film of grease on the sliding surface.
12. **ISO cylinder with metal bearing:**
Grease the entire inner sliding surface including the chamfer of the bearing [2] with thin film of the grease included in the set of wearing parts.



13. Grease the new scraper ring as follows:

Area	Greasing
[1] Edges of the sealing and scraper part	apply grease
[2] Space between the edges	fill with grease ¹⁾
[3] Sealing surfaces	apply grease

¹⁾ → [Chapter 5.2.2 on page 35](#)



The mounting sleeve and thrust piece can be used for both scraper ring variants.
(→ [Chapter 7.2 on page 36](#)).

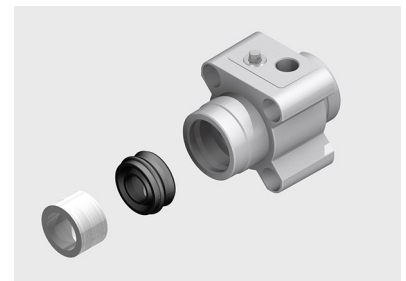
DSBF-C-...- (Standard version)



Note

Note the mounting direction:
Individual sealing lip or labelling facing the outside.

14. Use a suitable thrust piece to insert the scraper ring into the bearing cap.



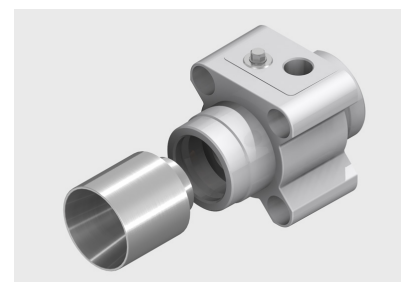
DSBF-C-...-A3 (suitable for unlubricated operation)



Note

To avoid damage to the scraper ring:
Insert the scraper ring only with matching mounting sleeve and the corresponding thrust piece.

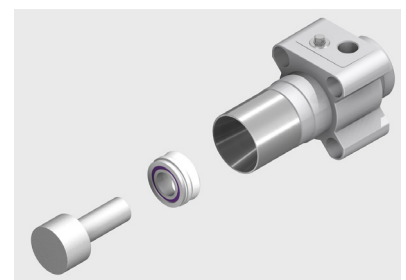
1. Place the mounting sleeve with centring seat on the bearing cap.



Note

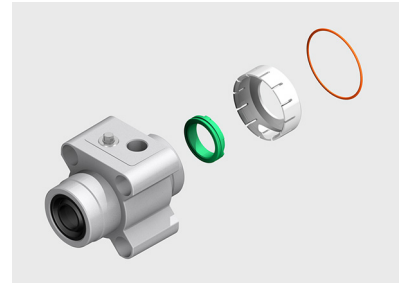
Note the mounting direction of the scraper ring:
Purple coloured silicone ring facing outwards.

2. Use the thrust piece and mounting sleeve to insert the scraper ring into the bearing cap.



All sizes

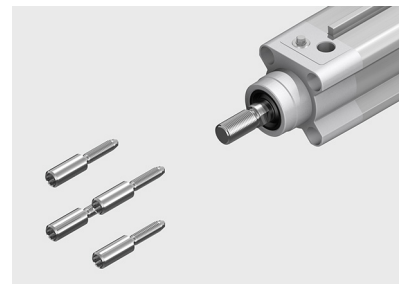
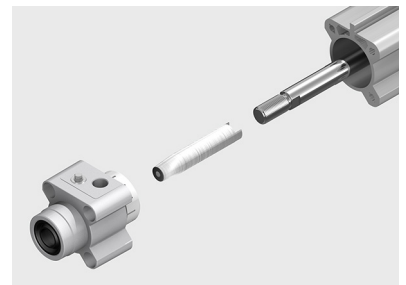
15. Apply a thin film of grease on the buffer seals at the front side of the sealing surface and on the sealing lip.
16. Insert the buffer seals into the bearing and end caps.
17. Place the holding discs on the bearing and end caps.
18. Grease the O-rings with the grease included in the set of wearing parts.
19. Insert the O-rings into the groove of the bearing and end cap.



Note

To avoid damage to the bearing and scraper ring:
Place the matching mounting sleeve on the thread of the piston rod
(→ [Chapter 7.2 on page 36](#)).

20. Guide the bearing cap over the mounting sleeve on the piston rod up to the cylinder barrel.
21. Place the end cap on the cylinder barrel.
22. Clean flange screws to remove screw locking agent.
23. Wet the flange screws with screw locking agent.
24. Screw in the flange screws.
25. Align the bearing and end cap flush with the cylinder barrel.
26. Tighten the flange screws with the appropriate tightening torque.



Size	Tightening torque
DSBF-C-32	7 Nm
DSBF-C-40	7 Nm
DSBF-C-50	13 Nm
DSBF-C-63	13 Nm
DSBF-C-80	25 Nm
DSBF-C-100	25 Nm
DSBF-C-125	60 Nm

27. Perform a functional test or start up the repaired ISO cylinder as described in the operating instructions.
The operating instructions are enclosed with the ISO cylinder or can be called up on the Festo website (→ www.festo.com).

4.4 Repairing the ISO cylinder DSBF-C-...-T1 / T4 / A1 and DSBF-C-L / U

4.4.1 Requirements

- Preparatory work has been completed (→ [Chapter 4.1 on page 18](#)).
- Visual inspection has been performed (→ [Chapter 4.2 on page 18](#)).

4.4.2 Validity

This chapter applies to the repair of the following versions of the ISO cylinder:

- DSBF-C-L
- DSBF-C-U
- DSBF-C-...-T1
- DSBF-C-...-T4
- DSBF-C-...-A1

The different versions and features of the ISO cylinder are explained in [Chapter 2.3 on page 9](#).



The following repair steps describe and show the ISO cylinder with single-ended piston rod.

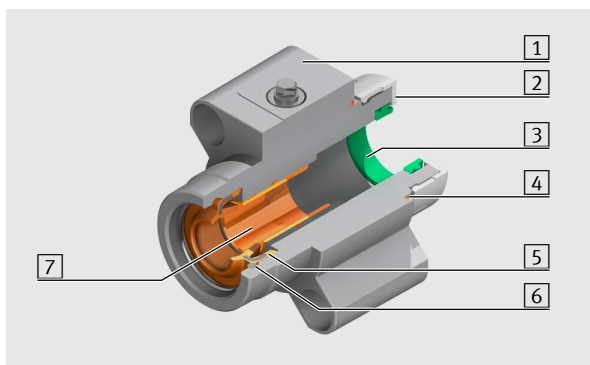
Differences in the **ISO cylinder with double-ended piston rod (DSBF-C-...-T)**:

- Note the differences shown in the components list (→ [Chapter 3.2 on page 14](#)).
- Take into consideration the following for the repair steps:
 - Instead of threaded coupling: Rear piston rod
 - Instead of end cap: Rear bearing cap
 - Also replace the scraper ring in the rear bearing cap.

4.4.3 Structure of the bearing cap



The bearing and end caps of the various sizes and versions differ and can differ from the illustrations shown in the following. Before each repair, the parts lists of the online spare parts catalogue on the Festo website must be used to determine the precise type of bearing and end cap and must be taken into consideration in the repair (→ www.festo.com/spareparts).

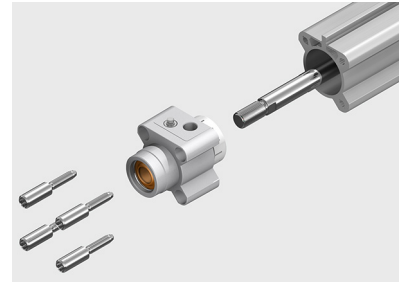


- 1 Bearing cap
- 2 Holding disc (only DSBF-C-32 ... 63)
- 3 Buffer seal (only DSBF-C-...-PPV / PPS)
- 4 O-ring
- 5 Scraper ring with metal insert
- 6 Circlip
- 7 Bearing (metal)

Illustrated: DSBF-C-32-...-T1 / T4 / A1

4.4.4 Removing the bearing and end caps

1. Unscrew the flange screws in the bearing and end caps.
2. Pull the bearing and end caps off the cylinder barrel and piston rod.



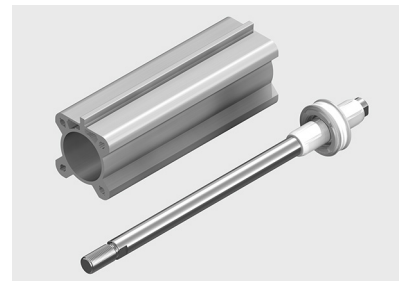
4.4.5 Replacing the piston components

1. Pull the piston rod out of the cylinder barrel.
2. Inspect the cylinder barrel and piston rod for damage.



Note

The entire ISO cylinder must be replaced if the cylinder barrel, particularly the bearing surface, shows signs of significant damage.



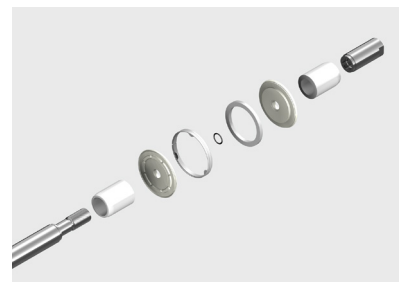
3. Unscrew the threaded coupling from the piston rod.



Note

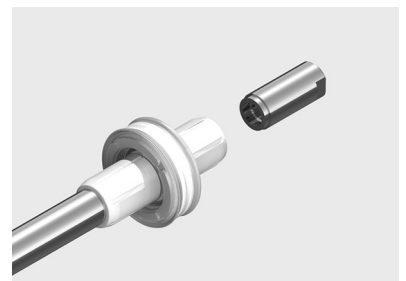
Note the order and alignment when pushing down the piston components. Recommendation: Place the piston components in such a way that correct assembly is ensured.

4. Push the piston components off the piston rod.
5. Clean the thread of the piston rod and threaded coupling to remove screw locking agent.
6. Replace the components contained in the set of wearing parts.
7. Push the piston components onto the piston rod, in the correct order and alignment.
8. Wet the threaded coupling with screw locking agent.
9. Screw the threaded coupling onto the piston rod and tighten with the appropriate torque.



Illustrated: Multi-part piston

Size	Tightening torque
DSBF-C-32	10 Nm
DSBF-C-40	20 Nm
DSBF-C-50	30 Nm
DSBF-C-63	40 Nm
DSBF-C-80	60 Nm
DSBF-C-100	60 Nm
DSBF-C-125	170 Nm



4.4.6 Inserting the piston rod into the cylinder barrel

1. Clean the cylinder barrel with a cloth (→ [Chapter 5.1 on page 35](#)).
2. Grease the following parts with the grease included in the set of wearing parts:

Component	Greasing
Inside surface of cylinder barrel	apply a thin film ¹⁾ of grease
Surface of piston rod	apply a thin film ¹⁾ of grease
Piston seal lip rings ³⁾	apply thin film ¹⁾ of grease on the outside
Piston surface between lip rings (grease reservoir ²⁾)	fill uniformly with grease
Cushioning boss / buffer sleeve	apply thin film ¹⁾ of grease on the outside

¹⁾ → [Chapter 5.2.1 on page 35](#)

²⁾ → [Chapter 5.2.1 on page 35](#)

³⁾ Do not (completely) fill the installation groove of the lip rings / T-rings and reduction of the seal to the sealing lip (outside) with grease.

3. Position the piston flat against the front side of the cylinder barrel.



Note

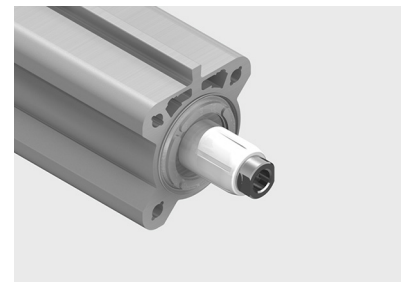
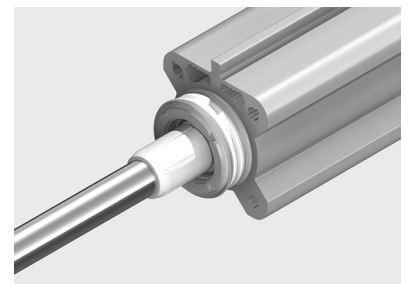
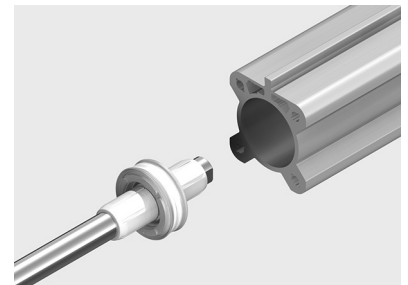
The sealing lip of the lip ring may not fold back against the inside of the piston.

If necessary, use a flat object without sharp edges to insert the lip ring into the cylinder barrel.

4. Insert the lip ring in the cylinder barrel by tilting and turning the ring slightly.
5. Push the piston completely through the cylinder barrel until the first lip ring protrudes from the end of the cylinder barrel.
6. Pull back the piston rod until the piston sits fully in the cylinder barrel.



This procedure ensures that the sealing lips of the two lip rings sit correctly in the cylinder barrel.



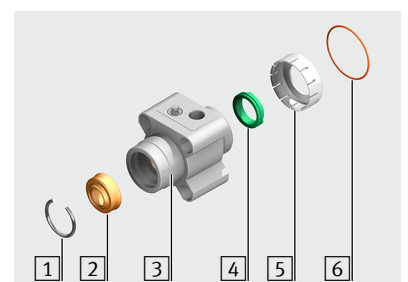
4.4.7 Repairing and attaching the bearing and end caps

1. Remove the circlip [1] and scraper ring [2] from the bearing cap [3].
2. Remove the O-ring [6] from the bearing and end cap.
3. Pull the holding discs [5] off the bearing and end caps.
4. Remove the buffer seal [4] from the bearing and end caps.
5. Check the bearing in the bearing cap.

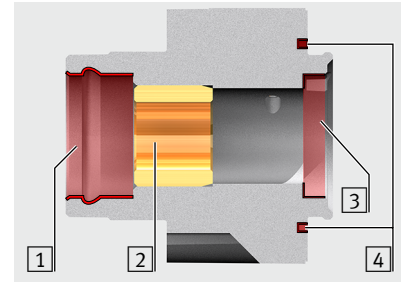


Note

In case of identifiable damage to the bearing, which could impair its function (e.g. deposits or scoring), the bearing cap or bearing cap with end-position locking must be completely replaced.



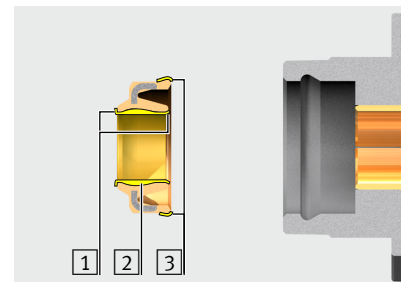
6. Clean the seat of the scraper ring [1].
7. Clean the seat of the buffer seal [3].
8. Clean the seat of the O-ring [4].
9. Grease the entire inner sliding surface including the chamfer of the bearing [2] with thin film of the grease included in the set of wearing parts.



10. Grease the new scraper ring as follows:

Area	Greasing
[1] Edges of the sealing and scraper part	apply grease
[2] Space between the edges	fill with grease ¹⁾
[3] Sealing surfaces	apply grease

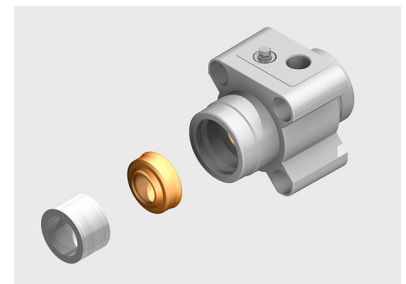
¹⁾ → [Chapter 5.2.2 on page 35](#)



Note

Note the mounting direction:
Individual sealing lip or labelling facing the outside.

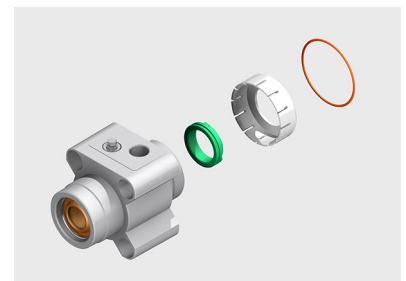
11. Use a suitable thrust piece to insert the scraper ring into the bearing cap.



12. Push together the circlip (e.g. with the help of pliers) and insert into the bearing cap.



13. Apply a thin film of grease on the buffer seals at the front side of the sealing surface and on the sealing lip.
14. Insert the buffer seals into the bearing and end caps.
15. Place the new holding discs on the bearing and end caps.
16. Grease the O-rings with the grease included in the set of wearing parts.
17. Insert the O-rings into the groove of the bearing and end cap.





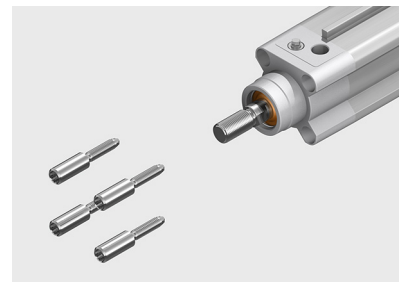
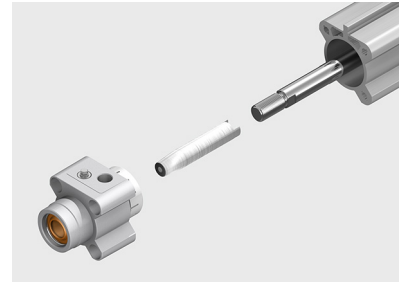
Note

To avoid damage to the bearing and scraper ring:
Place the matching mounting sleeve on the thread of the piston rod
(→ [Chapter 7.2 on page 36](#)).

18. Guide the bearing cap over the mounting sleeve on the piston rod up to the cylinder barrel.
19. Place the end cap on the cylinder barrel.
20. Clean flange screws to remove screw locking agent.
21. Wet the flange screws with screw locking agent.
22. Screw in the flange screws.
23. Align the bearing and end cap flush with the cylinder barrel.
24. Tighten the flange screws with the appropriate tightening torque.

Size	Tightening torque
DSBF-C-32	7 Nm
DSBF-C-40	7 Nm
DSBF-C-50	13 Nm
DSBF-C-63	13 Nm
DSBF-C-80	25 Nm
DSBF-C-100	25 Nm
DSBF-C-125	60 Nm

25. Perform a functional test or start up the repaired ISO cylinder as described in the operating instructions.
The operating instructions are enclosed with the ISO cylinder or can be called up on the Festo website (→ www.festo.com).



4.5 Repairing the ISO cylinder DSBF-C-...-T3 / A2

4.5.1 Requirements

- Preparatory work has been completed (→ [Chapter 4.1 on page 18](#)).
- Visual inspection has been performed (→ [Chapter 4.2 on page 18](#)).

4.5.2 Validity

This chapter applies to the repair of the following versions of the ISO cylinder:

- DSBF-C-...-T3
- DSBF-C-...-A2

The different versions and features of the ISO cylinder are explained in [Chapter 2.3 on page 9](#).



The following repair steps describe and show the ISO cylinder with single-ended piston rod.

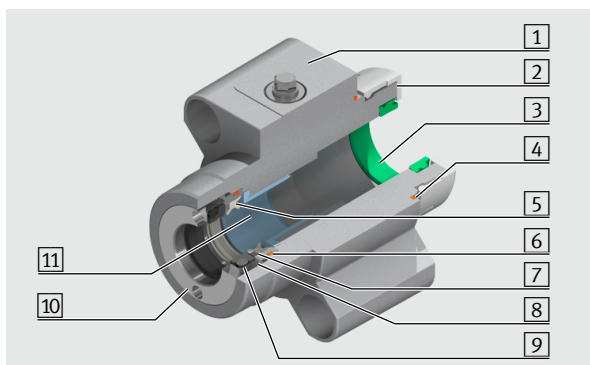
Differences in the **ISO cylinder with double-ended piston rod (DSBF-C-...-T)**:

- Note the differences shown in the components list (→ [Chapter 3.3 on page 16](#)).
- Take into consideration the following for the repair steps:
 - Instead of threaded coupling: Rear piston rod
 - Instead of end cap: Rear bearing cap
 - Also replace the scraper ring in the rear bearing cap.

4.5.3 Structure of the bearing cap



The bearing and end caps of the various sizes and versions differ and can differ from the illustrations shown in the following. Before each repair, the parts lists of the online spare parts catalogue on the Festo website must be used to determine the precise type of bearing and end cap and must be taken into consideration in the repair (→ www.festo.com/spareparts).

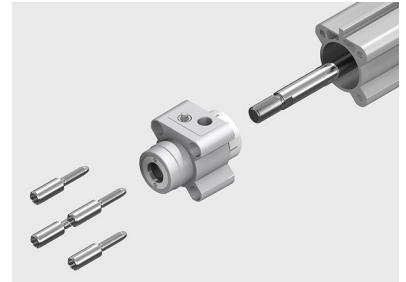


Illustrated: DSBF-C32-...-T3

- 1 Bearing cap
- 2 Holding disc (only DSBF-C-32 ... 63)
- 3 Buffer seal (only DSBF-C-...-PPV / PPS)
- 4 O-ring
- 5 Scraper ring
- 6 O-ring
- 7 Insert sleeve
- 8 Excluder
- 9 O-ring
- 10 DSBF-C-32 ... 100: Screwed insert
DSBF-C-125 (not illustrated): Circlip
- 11 DSBF-C-32 ... 100-...-T3:
Flanged bearing (plastic)
Not illustrated:
DSBF-C-125-...-T3 / A2: Bearing (plastic)
DSBF-C-32 ... 100-...-A2: Bearing (metal)

4.5.4 Removing the bearing and end caps

1. Unscrew the flange screws in the bearing and end caps.
2. Pull the bearing and end caps off the cylinder barrel and piston rod.



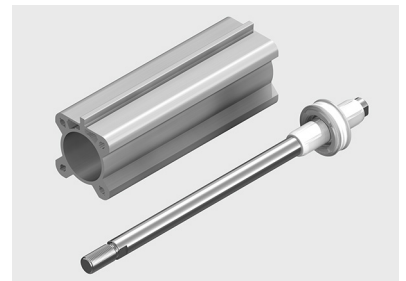
4.5.5 Replacing the piston components

1. Pull the piston rod out of the cylinder barrel.
2. Inspect the cylinder barrel and piston rod for damage.



Note

The entire ISO cylinder must be replaced if the cylinder barrel, particularly the bearing surface, shows signs of significant damage.



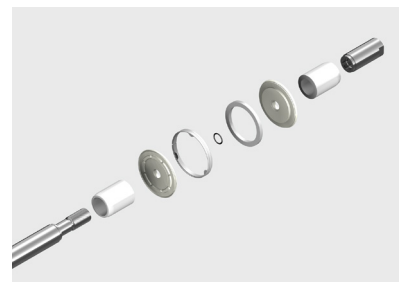
3. Unscrew the threaded coupling from the piston rod.



Note

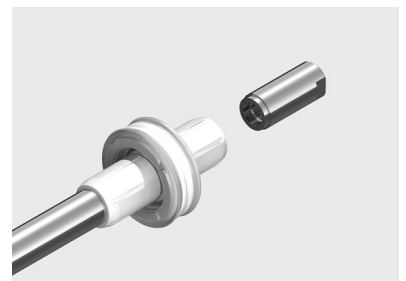
Note the order and alignment when pushing down the piston components.
Recommendation: Place the piston components in such a way that correct assembly is ensured.

4. Push the piston components off the piston rod.
5. Clean the thread of the piston rod and threaded coupling to remove screw locking agent.
6. Replace the components contained in the set of wearing parts.
7. Push the piston components onto the piston rod, in the correct order and alignment.
8. Wet the threaded coupling with screw locking agent.
9. Screw the threaded coupling onto the piston rod and tighten with the appropriate torque.



Illustrated: DSBF-C-63-...

Size	Tightening torque
DSBF-C-32	10 Nm
DSBF-C-40	20 Nm
DSBF-C-50	30 Nm
DSBF-C-63	40 Nm
DSBF-C-80	60 Nm
DSBF-C-100	60 Nm
DSBF-C-125	170 Nm



4.5.6 Inserting the piston rod into the cylinder barrel

1. Clean the cylinder barrel with a cloth (→ [Chapter 5.1 on page 35](#)).
2. Grease the following components with the grease included in the set of wearing parts:

Component	Greasing
Inside surface of cylinder barrel	apply a thin film ¹⁾ of grease
Surface of piston rod	apply a thin film ¹⁾ of grease
Piston seal lip rings ³⁾	apply thin film ¹⁾ of grease on the outside
Piston surface between lip rings (grease reservoir ²⁾)	fill uniformly with grease
Cushioning boss / buffer sleeve	apply thin film ¹⁾ of grease on the outside

¹⁾ → [Chapter 5.2.1 on page 35](#)

²⁾ → [Chapter 5.2.1 on page 35](#)

³⁾ Do not (completely) fill the installation groove of the lip rings / T-rings and reduction of the seal to the sealing lip (outside) with grease.

3. Position the piston flat against the front side of the cylinder barrel.



Note

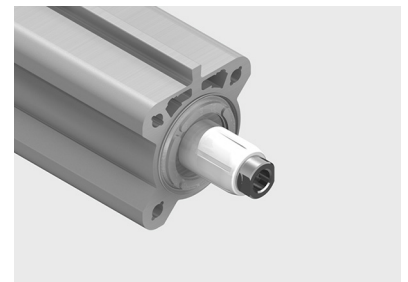
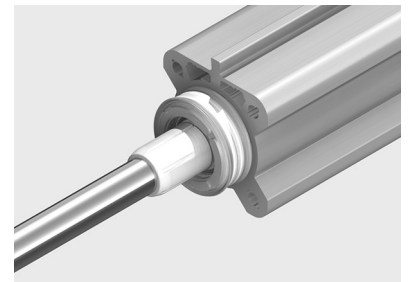
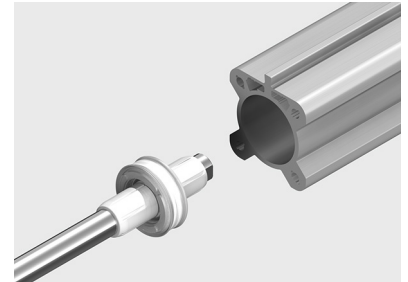
The sealing lip of the lip ring may not fold back against the inside of the piston.

If necessary, use a flat object without sharp edges to insert the lip ring into the cylinder barrel.

4. Insert the lip ring in the cylinder barrel by tilting and turning the ring slightly.
5. Push the piston completely through the cylinder barrel until the first lip ring protrudes from the end of the cylinder barrel.
6. Pull back the piston rod until the piston sits fully in the cylinder barrel.



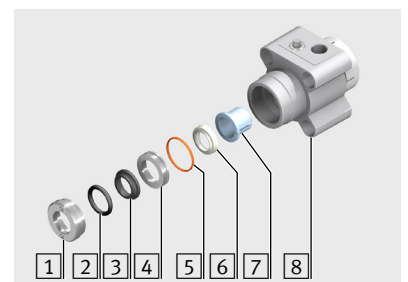
This procedure ensures that the sealing lips of the two lip rings sit correctly in the cylinder barrel.



4.5.7 Repairing and attaching the bearing and end caps

DSBF-C-32 ... 100

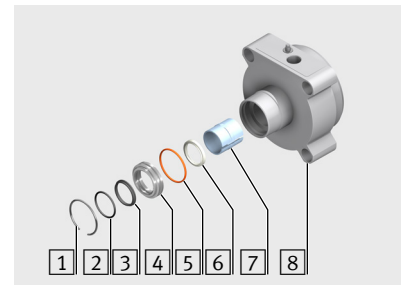
1. Unscrew the screwed insert [1] from the bearing cap [8].
2. Remove the excluder [3] and O-ring [2] from the screwed insert.
3. Remove the insert sleeve [4] with scraper ring [6] and O-ring [5] from the bearing cap.
4. Separate the scraper ring and O-ring from the insert sleeve.
5. Remove the flanged bearing [7].



Illustrated: DSBF-C-32-...-T3

DSBF-C-125

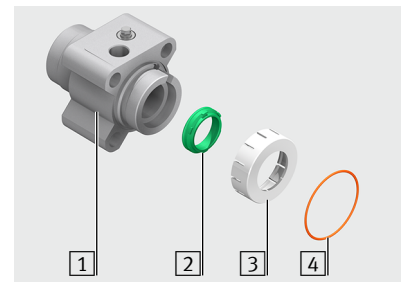
1. Remove the circlip [1] from the bearing cap [8].
2. Remove the insert sleeve [4] with excluder [3], O-ring [2], scraper ring [6] and O-ring [5] from the bearing cap.
3. Separate the scraper ring and O-ring from the insert sleeve.
4. Remove the excluder and O-ring from the insert sleeve.



Illustrated: DSBF-C-125-...-T3

All sizes

6. Remove the O-ring [4] from the bearing [1] and end cap.
7. Pull the holding discs [3] off the bearing and end caps.
8. Remove the buffer seal [2] from the bearing and end caps.
9. Check the bearing in the bearing cap.



Note

ISO cylinder with metal bearing (DSBF-C-32 ... 100-...-A2)

In case of identifiable damage to the bearing, which could impair the function (e.g. deposits or scoring), the bearing cap must be completely replaced.

10. ISO cylinder with metal bearing (DSBF-C-32 ... 100-...-A2):

Clean the bearing.

11. Grease the entire inner sliding surface including the chamfer of the bearing with a thin film of the grease included in the set of wearing parts.

12. ISO cylinder with plastic bearing (DSBF-C-...-T3, DSBF-C-125-...-A2):

If damaged, push the bearing out of the bearing cap.

13. **DSBF-C-32 ... 100:** Clean the thread of the bearing cap and the screw insert to remove screw locking agent.

14. Clean the seat of the insert sleeve [1] in the bearing cap.

15. Clean the seat of the buffer seal [5].

16. Clean the seat of the O-ring [4].

17. ISO cylinder with plastic bearing (DSBF-C-...-T3, DSBF-C-125-...-A2):

Insert new bearing into the bearing cap.

18. **DSBF-C-125-...-T3 / A2:** Push the bearing until the middle shoulder of the bearing latches into the groove [3] in the bearing cap.

19. Grease the inner sliding surface of the bearing [2] with thin film of the grease included in the set of wearing parts.

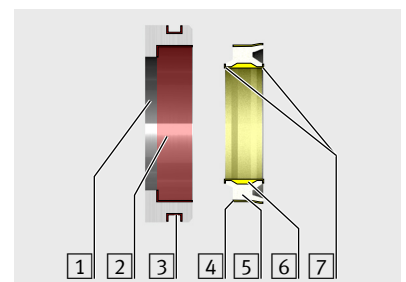
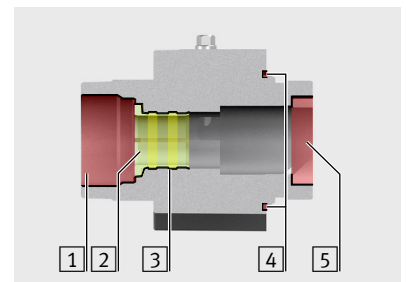
20. **DSBF-C-125-...-T3 / A2:** Fill the grease reservoir in the bearing with the grease included in the set of wearing parts.

21. Clean the seat of the scraper ring [2] and of the O-ring [3] on the insert sleeve [1].

22. Grease the new scraper ring [5] as follows:

Area	Greasing
[4] Sealing surfaces	apply grease
[6] Space between the edges	fill with grease ¹⁾
[7] Edges of the sealing and scraper part	apply grease

¹⁾ → [Chapter 5.2.2 on page 35](#)

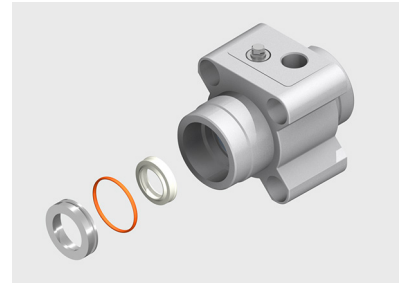




Note

Note the mounting direction of the scraper ring:
Protruding sealing lip facing outwards, grease reservoir facing inwards.

23. Insert the greased scraper ring into the insert sleeve.
24. Grease the new O-ring with the grease included in the set of wearing parts.
25. Insert the O-ring into the outer groove of the insert sleeve.



DSBF-C-125

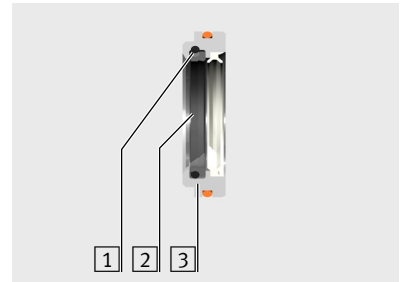
1. Grease the O-ring [1] and bearing surface of the excluder [2] with the grease included in the set of wearing parts.



Note

Note the mounting direction and order:
O-ring between the insert sleeve and excluder.

2. Insert the O-ring and excluder together into the insert sleeve [3].



All sizes



Note

Note the mounting direction of the insert sleeve: Chamfer faces the bearing cap.

26. Insert the insert sleeve into the bearing cap.

DSBF-C-32 ... 100

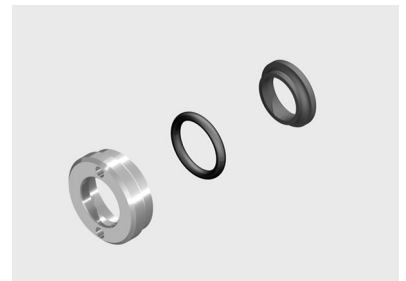
27. Grease the O-ring and bearing surface of the excluder with the grease included in the set of wearing parts.



Note

Note the mounting direction and order:
O-ring between the screwed insert and excluder.

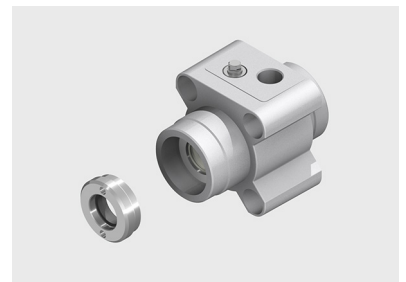
28. Insert the O-ring and excluder together into the screwed insert.



29. Wet the thread of the screwed insert with screw locking agent.

30. Screw the screwed insert into the bearing cap and tighten with the appropriate tightening torque.

Size	Tightening torque
DSBF-C-32	4 Nm
DSBF-C-40	8 Nm
DSBF-C-50	11 Nm
DSBF-C-63	11 Nm
DSBF-C-80	15 Nm
DSBF-C-100	15 Nm



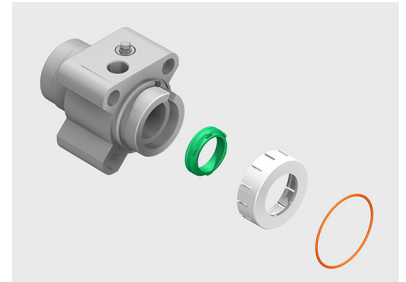
DSBF-C-125

- Push together the circlip (e.g. using pliers) and insert into the bearing cap.



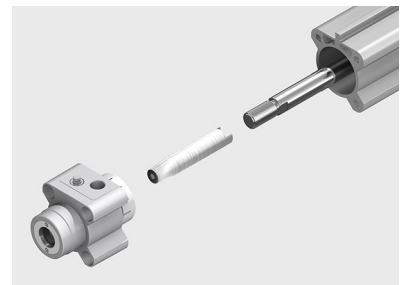
All sizes

31. Apply thin film of grease on the buffer seals on the front side facing the sealing surface and on the sealing lip using the grease included in the set of wearing parts.
32. Insert the buffer seals into the bearing and end caps.
33. Place the holding discs on the bearing and end caps.
34. Grease the O-rings with the grease included in the set of wearing parts.
35. Insert the O-rings into the groove of the bearing and end cap.

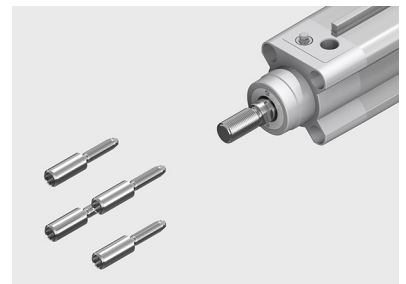


Note

To avoid damage to the bearing and scraper ring:
Place the matching mounting sleeve on the thread of the piston rod
(→ [Chapter 7.2 on page 36](#)).



36. Guide the bearing cap over the mounting sleeve on the piston rod up to the cylinder barrel.
37. Place the end cap on the cylinder barrel.
38. Clean flange screws to remove screw locking agent.
39. Wet the flange screws with screw locking agent.
40. Screw in the flange screws.
41. Align the bearing and end cap flush with the cylinder barrel.
42. Tighten the flange screws with the appropriate tightening torque.



Size	Tightening torque
DSBF-C-32	7 Nm
DSBF-C-40	7 Nm
DSBF-C-50	13 Nm
DSBF-C-63	13 Nm
DSBF-C-80	25 Nm
DSBF-C-100	25 Nm
DSBF-C-125	60 Nm

43. Perform a functional test or start up the repaired ISO cylinder as described in the operating instructions.
The operating instructions are enclosed with the ISO cylinder or can be called up on the Festo website (→ www.festo.com).

5 Cleaning and greasing

5.1 Cleaning

The seals are designed so that the lubricant film applied to them is effective for the entire service life of the seal. The ISO cylinder must be cleaned thoroughly to remove all foreign particles, machining residues and old lubricants before it is greased to ensure this life-time lubrication is retained.

All non-abrasive cleaning agents are permissible.



Note

Regular removal of the lubricant on the surface of the piston rod reduces its service life.



Note

- Clean with a soft, lint-free cloth and non-abrasive cleaning agents.
- Check the compatibility of the cleaning agent with the materials to be cleaned.

5.2 Greasing

The various components and seals of the ISO cylinder require different levels of greasing depending on a number of factors.



Note

To ensure the life-time lubrication and so that a uniform lubricant film results:

- After greasing, move the piston rod with mounted piston and piston seals several times along the entire stroke of the cylinder barrel.

5.2.1 Thin grease film

A film of grease covers the bearing surface so that a continuous film of grease exists and the grease colour darkens the surface slightly.

Recommendation:

- Apply the grease with a paint brush, a fine bristle brush or similar.

5.2.2 Grease reservoir

Grease quantity enclosed between two sealing rings or in the enclosed ring volumes.

6 Maintenance and care

The ISO cylinders are maintenance-free, due to their life-time lubrication.

7 Tools

This chapter provides an overview of the tools and accessories required to repair the ISO cylinder.

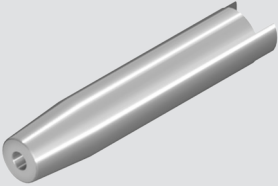
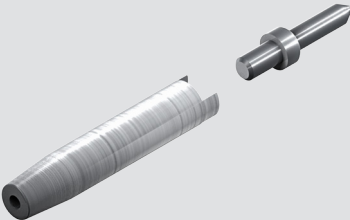
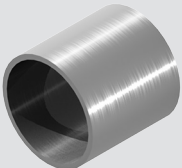
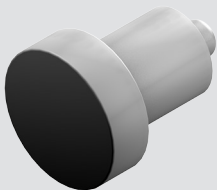
7.1 Standard tools

The following standard tools are required to repair the ISO cylinder:

- Screwdriver
- Wrench
- Flat pliers
- Torque wrench
- Face pin spanner (only for ISO cylinder DSBF-C-32 ... 100-...-T3)

7.2 Special tools

The following special tools are required to repair the ISO cylinder:

Designation	Additional information	Figure
Mounting sleeve for piston rod with male thread (Must be produced by the customer.)	To protect the piston rod seal and the bearing in the bearing cap or sealing seat during the repair work. The schematic diagram is included in “Tool and repair accessories” information brochure.	
Mounting sleeve and mandrel for piston rod with female thread (Must be produced by the customer.)	To protect the piston rod seal and the bearing in the bearing cap or sealing seat during the repair work. A mandrel is additionally inserted into the female thread of the piston rod for piston rods with female thread. The mounting sleeve is pushed onto this mandrel. The schematic diagrams are included in “Tool and repair accessories” information brochure.	
Mounting sleeve and thrust piece for scraper ring on the DSBx (Must be produced by the customer.)	Prevents damage to the scraper ring when inserting it into the bearing cap. The schematic diagrams are included in “Tool and repair accessories” information brochure.	 



Further information on the special tools and schematic diagrams is included in the **"Tools and repair accessories"** information brochure. The information brochure can be found in the online spare parts catalogue on the Festo website (→ [Tools and repair accessories.pdf](#)).

8 Liability

The General Terms and Conditions of Business (AGB) of Festo SE & Co. KG apply, which can be viewed on the Festo website (→ www.festo.com).

Conditions of use for “Electronic documentation”

I. Protection rights and scope of use

The file of your choice is subject to protective provisions. Festo or third parties have protective rights to this electronic documentation, which Festo provides both on portable data storage devices (diskettes, CD ROM, removable disks) as well as on the Internet and/or intranet, referred to as electronic documentation below. In so far as third parties have whole or partial right of access to this electronic documentation, Festo has the appropriate rights of use. Festo permits the user the use under the following conditions:

1. Scope of use

a) The user of the electronic documentation is allowed to use this documentation for his own, exclusively company-internal purposes on any number of machines within his business premises (location). This right of use includes exclusively the right to save the electronic documentation on the central processors (machines) used at the location.

b) The electronic documentation may be printed out on a printer at the location of the user as often as desired, providing this printout is printed with or kept in a safe place together with these conditions of use and other user instructions.

c) With the exception of the Festo logo, the user has the right to use pictures and texts from the electronic documentation for creating his own machine and system documentation. The use of the Festo logo requires written consent from Festo. The user is responsible for ensuring that the pictures and texts used match the machine/system or the product.

d) Further uses are permitted within the following framework:

Copying exclusively for use within the framework of machine and system documentation from electronic documents of all documented supplier components. Demonstrating to third parties exclusively under guarantee that no data material is stored wholly or partly in other networks or other data storage devices or can be reproduced there.

Passing on printouts to third parties not covered by the regulation in item 3, as well as any processing or other use are not permitted.

2. Copyright note

Every “electronic document” receives a copyright note. This note must be included on every copy and every printout.

Example: E 2003, Festo SE & Co. KG, D-73734 Esslingen

3. Transferring the authorisation of use

The user can transfer the authorization of use in the scope of and with the limitations of the conditions in accordance with items 1 and 2 completely to a third party. The third party must be made explicitly aware of these conditions of use.

II. Exporting the electronic documentation

When exporting the electronic documentation, the licence holder must observe the export regulations of the exporting country and those of the purchasing country.

III. Warranty

1. Festo products are being continuously developed with regard to hardware and software. The hardware status and, where applicable, the software status of the product is given in the product labelling. If the electronic documentation, in whatever form, is not supplied with the product, i.e. is not supplied on a data storage device (diskettes, CD ROM, removable disk) as a delivery unit with the relevant product, Festo does not guarantee that the electronic documentation corresponds to every hardware and software status of the product. In this case, the printed documentation from Festo accompanying the product alone is decisive for ensuring that the hardware and software status of the product matches that of the electronic documentation.

2. The information contained in this electronic documentation can be amended by Festo without prior notice and does not commit Festo in any way.

IV. Liability/limitations on liability

1. Festo provides this electronic documentation in order to assist the user in creating his machine and system documentation. In the case that electronic documentation in the form of data storage devices (diskettes, CD ROM, removable disk) does not

accompany a product, i.e. is not automatically supplied together with that product, Festo does not guarantee that the electronic documentation separately available/supplied matches the product actually used by the user.

The latter applies particularly to extracts of the documents for the user's own documentation. The guarantee and liability for separately available/supplied portable data storage devices, i.e. with the exception of electronic documentation provided on the Internet/intranet, are limited exclusively to proper duplication of the software, whereby Festo guarantees that in each case the relevant portable data storage device or software contains the latest status of the documentation. In respect of the electronic documentation available on the Internet/intranet, there is no guarantee that it will have the same version status as the last printed edition.

2. Furthermore, Festo cannot be held liable for the lack of economic success or for damage or claims by third parties resulting from the use of the documentation by the user, with the exception of claims arising from infringement of the protection rights of third parties concerning the use of the electronic documentation.

3. The limitations on liability as per paragraphs 1 and 2 do not apply if, in cases of intent or gross negligence or lack of warranted quality, a compulsory liability exists. In such a case, Festo's liability is limited to the damage discernable by Festo when the concrete circumstances are made known.

V. Safety guidelines/documentation

Warranty and liability claims in conformity with the aforementioned regulations (points III. and IV) may be raised only if the user has observed the safety guidelines of the documentation in conjunction with the use of the machine and its safety guidelines. The user himself is responsible for ensuring that the electronic documentation, when not supplied with the product, matches the product actually used by the user.