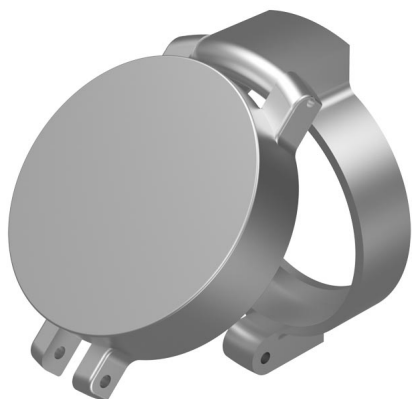


# EAO – Your Expert Partner for Human Machine Interfaces

## 704.928.38 - Protective cover round, flush design

### 704.928.38 - Protective cover round, flush design



*Attention: The preview is based on a sample product. This can differ from your current configuration.*

#### Mounting

Mounting cut-out mm  
Design flush

#### Other Attributes

Dimension 38 x 50 mm  
Weight 0,019 kg  
Material Aluminium  
Colour natural anodized

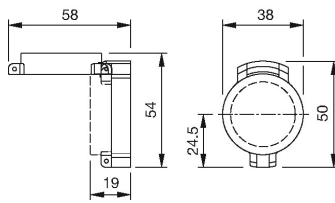
#### IP-Rating

Front protection IP65

# EAO – Your Expert Partner for Human Machine Interfaces

704.928.38 - Protective cover round, flush design

## Dimensions



## Additional information

hinged, with means for sealing

For pushbutton and selector switch short lever

Front panel thickness reduced by 2 mm

Please note that bigger minimum distances are necessary

The colour of anodized aluminium parts can vary due to technical production reasons