

HDP24-24-29SE-L015 ✓ ACTIVE

DEUTSCH | DEUTSCH HD30, DEUTSCH HDP

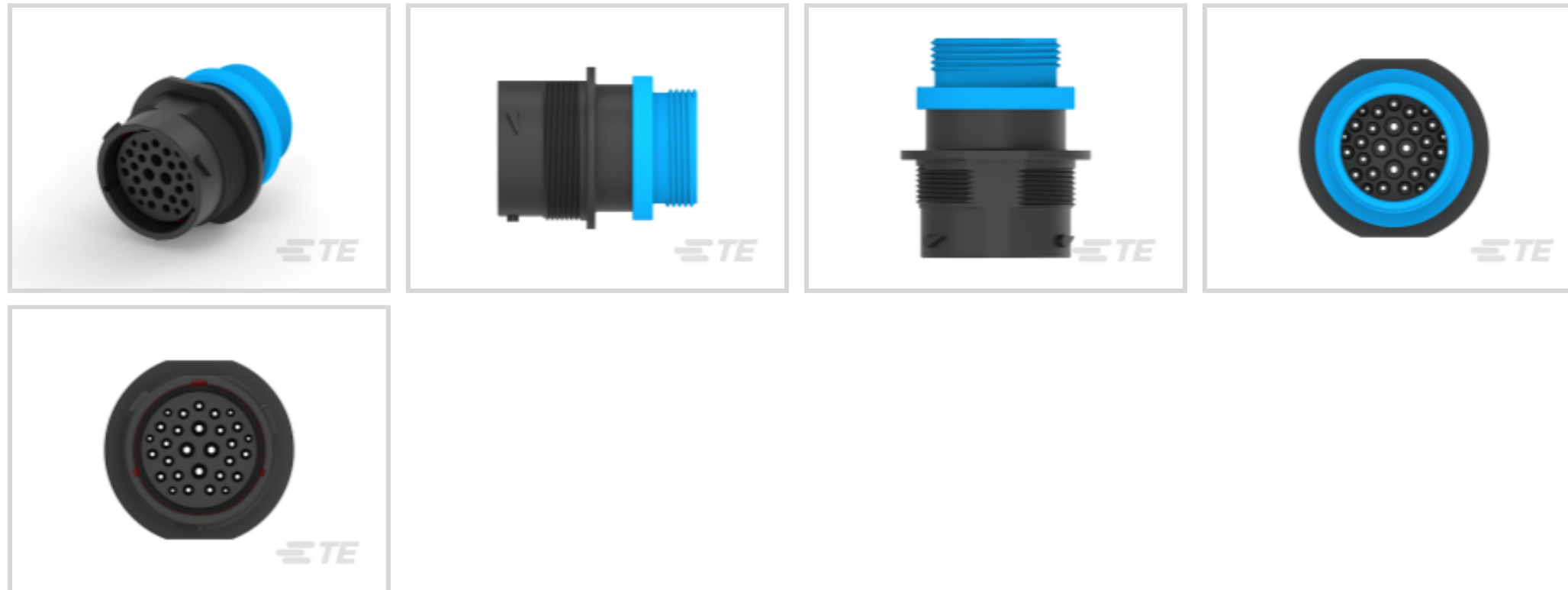
TE Internal #: HDP24-24-29SE-L015

12 V / 24 V / 48 V, 29 Position, Automotive Housing for Female Terminals, Wire-to-Panel, Sealable, Black, Wire & Cable, Power, Panel Mount, Hybrid

[View on TE.com >](#)



Automotive Parts > Automotive Connectors > Automotive Housings > DEUTSCH HDP20 Housings



Nominal Voltage Architecture: 12 V, 24 V, 48 V

Connector & Housing Type: **Housing for Female Terminals**

Number of Positions: **29**

Sealable: **Yes**

Operating Temperature Range: -55 – 125 °C [-67 – 257 °F]

[All DEUTSCH HDP20 Housings \(357\)](#)

Features

Product Type Features

Mixed & Hybrid Connector	Yes
Connector Shape	Circular
Connector & Housing Type	Housing for Female Terminals
Sealable	Yes
Primary Locking Feature	Contact Retainer
Connector System	Wire-to-Panel
Connector & Contact Terminates To	Wire & Cable

Configuration Features

Blank Cavity Position	0
Connector Modification	Threaded Adapter
Connector Seal Code	E Seal
Number of Positions	29



Electrical Characteristics

Operating Voltage	250 VDC
Nominal Voltage Architecture	12 V, 24 V, 48 V

Body Features

Cable Exit Angle	180 °
Primary Product Color	Black

Contact Features

Contact Size	Size 12, Size 16, Size 20
Contact Type	Socket
Mating Pin Diameter	1 mm, 1.6 mm, 2.4 mm [.04 in][.063 in][.094 in]
Contact Current Rating (Max)	7.5 A, 13 A, 25 A

Mechanical Attachment

Strain Relief	Without
Terminal Position Assurance	No
Mating Alignment Type	Polarizing Slot
Mating Alignment	With
Connector Mounting Type	Panel Mount

Housing Features

Housing Material	PA 66 GF
------------------	----------

Dimensions

Compatible Insulation Diameter Range	1.4 – 3.8 mm, 1.9 – 3.2 mm, 3.6 – 5.2 mm [.055 – .15 in][.075 – .125 in][.14 – .204 in]
Product Width	47.6 mm [1.87 in]
Product Length	50.8 mm [2 in]
Connector Height	58.7 mm [2.31 in]

Usage Conditions

Operating Temperature Range	-55 – 125 °C [-67 – 257 °F]
Operating Temperature (Max)	125 °C [257 °F]

Operation/Application

Circuit Application	Power
---------------------	-------

Industry Standards

--	--



IP Rating	IP67
-----------	------

UL Flammability Rating	UL 94V-0
------------------------	----------

Packaging Features

Packaging Quantity	150
--------------------	-----

Packaging Method	Tray
------------------	------

Other

Serviceable	Yes
-------------	-----

Connector Position Assurance Capable	No
--------------------------------------	----

Product Compliance

[For compliance documentation, visit the product page on TE.com>](#)

EU RoHS Directive 2011/65/EU	Compliant
------------------------------	-----------

EU ELV Directive 2000/53/EC	Compliant
-----------------------------	-----------

China RoHS 2 Directive MIIT Order No 32, 2016	有害物质含量符合标准要求 No Restricted Substance(s) Above Threshold
---	---

EU REACH Regulation (EC) No. 1907/2006	Current ECHA Candidate List: JUNE 2025 (250) Candidate List Declared Against: JUNE 2025 (250) Does not contain REACH SVHC
--	---

Halogen Content	Not Low Halogen - contains Br or Cl > 900 ppm.
-----------------	--

Solder Process Capability	Not reviewed for solder process capability
---------------------------	--

Product Compliance Disclaimer

This information is provided based on reasonable inquiry of our suppliers and represents our current actual knowledge based on the information they provided. This information is subject to change. The part numbers that TE has identified as EU RoHS compliant have a maximum concentration of 0.1% by weight in homogenous materials for lead, hexavalent chromium, mercury, PBB, PBDE, DBP, BBP, DEHP, DIBP, and 0.01% for cadmium, or qualify for an exemption to these limits as defined in the Annexes of Directive 2011/65/EU (RoHS2). Finished electrical and electronic equipment products will be CE marked as required by Directive 2011/65/EU. Components may not be CE marked. Additionally, the part numbers that TE has identified as EU ELV compliant have a maximum concentration of 0.1% by weight in homogenous materials for lead, hexavalent chromium, and mercury, and 0.01% for cadmium, or qualify for an exemption to these limits as defined in the Annexes of Directive 2000/53/EC (ELV). Regarding the REACH Regulation, the information TE provides on SVHC in articles for this part number is based on the latest European Chemicals Agency (ECHA) 'Guidance on requirements for substances in articles' posted at this URL: <https://echa.europa.eu/guidance-documents/guidance-on-reach>

Compatible Parts



TE Part # 24-D-PUNCH
D-HOLE PUNCH, SIZE 24



TE Part # 16-04477
GASKET, 24SZ, BLK, HD30



TE Part # CAT-H396-RC8382
Receptacle Protective Caps —
DEUTSCH HDP20



TE Part # CAT-H3910-B128
DEUTSCH HD10 Backshells



TE Part # HD30-24BT-BK
BOOT, 24SZ, ST, BLK



TE Part # HD30-24BT-90-BK
BOOT, 24SZ, RA, BLK



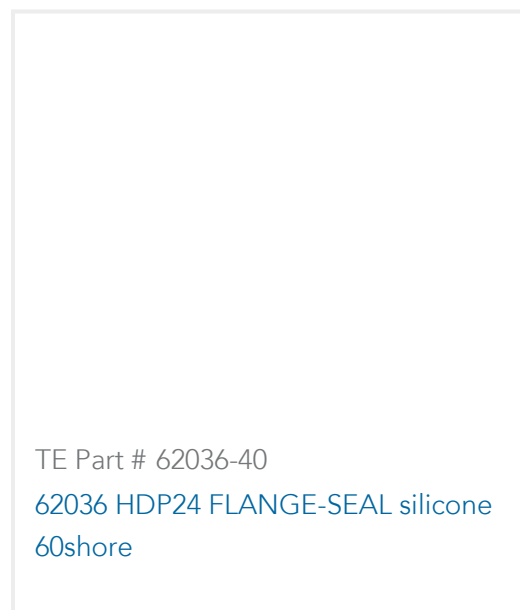
TE Part # CN21
CAP NUT, CONDUIT ADAPTER, NW22



TE Part # HD30-24BT
BOOT, 24SZ, ST, GRY



TE Part # SRN21
SEAL RING, CONDUIT ADAPTER,
NW22



TE Part # 62036-40
62036 HDP24 FLANGE-SEAL silicone
60shore



TE Part # 0411-204-1605
EXT TOOL, SIZE 16, 16-18 AWG, N,
DRK BLU



TE Part # CAT-D48-SP729
DEUTSCH Sealing Plugs



TE Part # 0411-337-1205
EXT TOOL, SIZE 12, 12-14 AWG, E,
ORG



TE Part # 0411-336-1605
EXT TOOL, SIZE 16, 16-20 AWG, E,
DRK BLU



TE Part # CAT-H396-B128
DEUTSCH HDP20 Backshells



TE Part # CAT-H396-CH8172
DEUTSCH HDP20 Housings

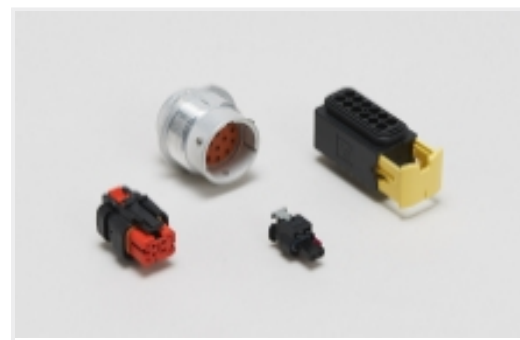


TE Part # 0411-240-2005
EXT TOOL, SIZE 20, 16-22 AWG, N,
RED

Also in the Series | **DEUTSCH HDP**



Automotive Connector Caps & Covers (16)



Automotive Housings(419)



Automotive Seals & Cavity Plugs(11)



Other Automotive Connector Accessories(12)

Also in the Series | **DEUTSCH HD30**



Automotive Housings(419)



Automotive Seals & Cavity Plugs(11)



Other Automotive Connector Accessories(12)

Customers Also Bought



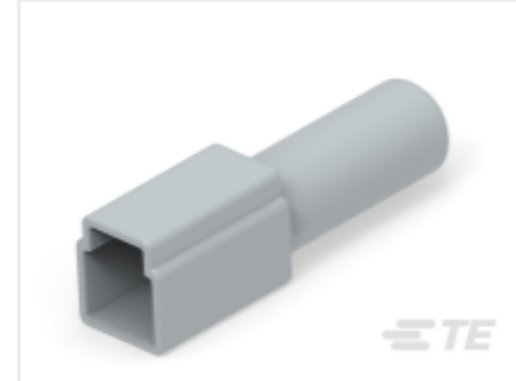
TE Part #K1151933
Batt. Disconnect 35-514-231-S-A5-900



TE Part #K1128729
Battery Disconnect 35-314-131-S-901



TE Part #CAT-D486-CH8172
DEUTSCH DTP Housings



TE Part #DT2S-BT
BOOT, 2P, PLG, ST, GRY



TE Part #0528-012-7005
BKSHL, 70P, BLK, PLG, RA, NO RIB, NW 26



TE Part #CAT-H396-CH8172
DEUTSCH HDP20 Housings



TE Part #2-1411573-1
ELOGED F5700Y75

Documents

Product Drawings

REC, 29P, BLK, E, THD, 12/16/20, S

English

CAD Files

3D PDF

3D



Customer View Model

[ENG_CVM_CVM_HDP24-24-29SE-L015_B.2d_dxf.zip](#)

English

Customer View Model

[ENG_CVM_CVM_HDP24-24-29SE-L015_B.3d_igs.zip](#)

English

Customer View Model

[ENG_CVM_CVM_HDP24-24-29SE-L015_B.3d_stp.zip](#)

English

By downloading the CAD file I accept and agree to the [Terms and Conditions](#) of use.

Datasheets & Catalog Pages

[DEUTSCH HD30 & HDP20 CONNECTOR SERIES](#)

English

[CONNECTOR SELECTOR](#)

English

Product Specifications

[Application Specification](#)

English

Agency Approvals

[UL Report](#)

English