

Continuous light element, with integrated LED, clear, 24 V AC/DC,  
Diameter 50 mm



General technical data	
Product brand name	SIRIUS
Product designation	Continuous light element
Design of the optical signal	continuous light
Type of voltage of the operating voltage	AC/DC
Operating voltage	
• 1 at DC rated value	24 V
• 1 at AC at 50 Hz rated value	24 V
• 1 at AC at 60 Hz rated value	24 V
Relative positive tolerance of the operating voltage	10 %
Relative negative tolerance of the operating voltage	-10 %
Consumed current maximum	40 mA
Service life of LED	100 000 h
Material	PC
Color	clear
Mounting type	Bayonet
Reference code	
• acc. to DIN EN 61346-2	P
• acc. to DIN EN 81346-2	P

## Mechanical data

Outer diameter of the signal column element 50 mm

## Lamp

Product component Light source Yes  
Type of light source LED  
Light intensity 6.68 cd  
Light intensity 3.87 ... 9.74 cd

## Ambient conditions

Ambient temperature during operation -20 ... +50 °C  
Protection class IP IP54  
Height 67 mm  
Width 52 mm

## Certificates/ approvals

General Product Approval



EMC



Declaration of Conformity



[Miscellaneous](#)

other

[Confirmation](#)

## Further information

Information- and Downloadcenter (Catalogs, Brochures,...)

[www.siemens.com/sirius/catalogs](http://www.siemens.com/sirius/catalogs)

Industry Mall (Online ordering system)

<https://mall.industry.siemens.com/mall/en/en/Catalog/product?mlfb=8WD4220-5AE>

Cax online generator

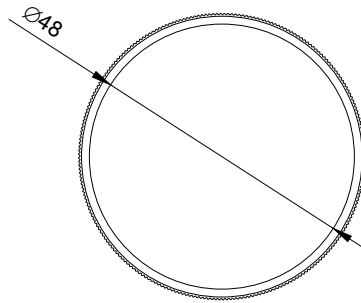
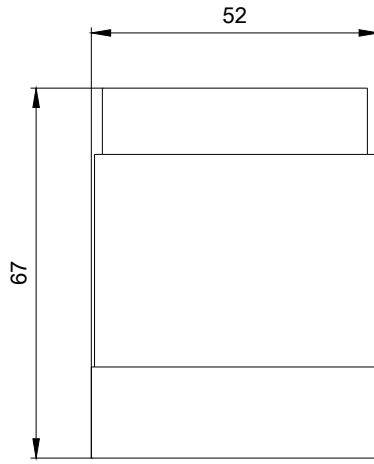
<http://support.automation.siemens.com/WW/CAXorder/default.aspx?lang=en&mlfb=8WD4220-5AE>

Service&Support (Manuals, Certificates, Characteristics, FAQs,...)

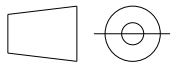
<https://support.industry.siemens.com/cs/ww/en/ps/8WD4220-5AE>

Image database (product images, 2D dimension drawings, 3D models, device circuit diagrams, EPLAN macros, ...)

[http://www.automation.siemens.com/bilddb/cax\\_de.aspx?mlfb=8WD4220-5AE&lang=en](http://www.automation.siemens.com/bilddb/cax_de.aspx?mlfb=8WD4220-5AE&lang=en)



last modified:



W9.4444; 8WD42.-...\_ALL  
W6.8611; 8WD42.-...\_ALL  
09/24/2020