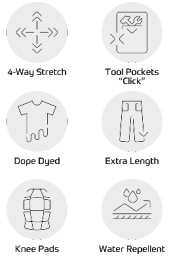


# Entire Work Trousers with 4-way stretch

BIONIC FINISHTECO  
CORDURA FABRIC

OEKO  
TEX®  
STANDARD  
100  
976-18601  
DTI



**Size:** 28,5-30-31,5-33-34,5-36-38-39,5-41-42,5-44-45,5-47-49-50,5-52-53,5-S31,5-S33-S34,5-S36-S38-S39,5-S41-S42,5-S44-S45,5-S47-S49-S50,5-S52-S53,5

**Shell fabric:** 91% Polyester (recycled) / 9% Elastane, 230 g/m<sup>2</sup>

**Wash:** 40

These work trousers are designed with focus on functionality, durability, and comfort to meet the needs in demanding work environments. They are made of a comfortable 4-way stretch material that provides increased flexibility, while the Ripstop fabric in contrast color ensures durability and a modern look. A concealed button closure protects surfaces from scratches, and the elastic at the back of the waist ensures an optimal fit, even during movement. The trousers have knee pockets with CORDURA® reinforcement and Velcro closure, as well as two adjustment options for height adjustment of the knee pads, allowing for individual customization. There are many functional pockets for extra storage, including a thigh pocket with zipper and a dedicated mobile phone pocket on the left thigh. Reinforced ruler pocket and hammer strap make it easy to store tools. Likewise, buttons are attached for qu

- Made in a comfortable 4-way stretch for increased comfort
- 4-way Ripstop in contrast color
- Concealed button closure to avoid scratches
- Elasticated waist at the back ensures a good fit
- Knee pocket with CORDURA® reinforcement and velcro closure
- Two adjustment options for knee pads
- Many functional pockets for extra storage
- Thigh pocket on the left thigh with zipper and mobile phone pocket
- Reinforced ruler pocket for increased durability
- Hammer strap
- Buttons for easy attachment of hanging tool pockets (9360-307 / 9360-373)
- Strap with D-ring for ID card
- Extra wide shortening means the trouser length can easily be extended by 6 cm (4 cm for short inseam length)
- Reflective print behind the knees for increased visibility
- The main material is coloured through a dope dyed process

**ENGEL®**