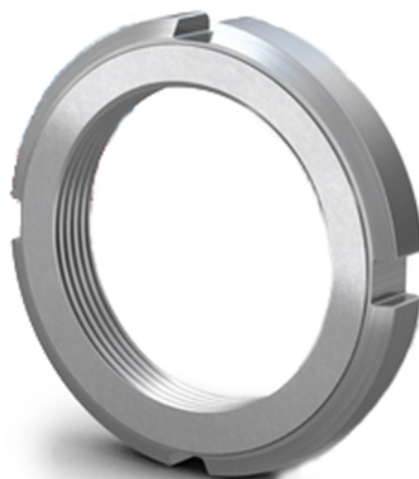


Datasheet

RS PRO Nyloc Nut M30x1.5mm

Stock No: 196-4171



Technical Specifications:

Id (mm)	30
Od (mm)	45
Width (mm)	7
Material	Steel

Features & Benefits:

Locknuts are used to locate bearings on to a shaft. Additionally, they can be used to mount bearings with a tapered bore onto a tapered shaft seats and adapter sleeves, and to dismount bearings from withdrawal sleeves.

Lock Nuts with integral locking reduce the cost of the shaft as no keyway is required.

Installation is quicker and easier because no separate device is necessary.