

LineLIGHT Fusion 500 24V RGB Tape



Part No.: 300.100.11

**MECHANICAL DATA**

| | |
|-----------------------------|-------------------|
| Length | 545 mm |
| Width | 33 mm |
| Height | 23 mm |
| Materials | Aluminium PC |
| Dome colour | Translucent |
| Housing colour | Black |
| Protection category | IP40 |
| Connection | M12 plug 5-pole |
| Type of fixing | Built-in mounting |
| Working temperature minimum | -30°C |
| Working temperature maximum | +50°C |
| Weight with packaging | 499 g |
| Product weight | 384 g |

ELECTRICAL DATA

| | |
|-----------------------------|--------------------------------|
| Operating voltage | 24V |
| Operating voltage type | DC |
| Operating voltage tolerance | +/- 10% |
| Rated operational voltage | 24 VDC |
| Rated operational current | 320 mA |
| Protection class | Protection class 3 |
| Pollution degree | 3 In the connection area: 2 |
| Overvoltage category | I |

OPTICAL DATA

| | |
|------------------------------|------------------|
| Light source | LED |
| Light colour | MC 7 colours |
| Optical signal image | Permanent |
| Length illuminated area (mm) | 500 |
| Service life optical | 50,000 h maximum |

APPROVAL DATA

| | |
|------------------------------|-----|
| Conforms with CE | Yes |
| Conforms with RoHS directive | No |
| WEEE | Yes |
| Conforms with RED directive | No |
| Conforms with ATEX-directive | No |
| Conforms with CCC-Ex | No |



For additional installation and mounting information, refer to the appropriate user guide at www.werma.com. This printed copy is for information only and is subject to alteration.

LineLIGHT Fusion 500 24V RGB Tape

| | |
|-------------------------------|-----------------------|
| Conforms with CCC | No |
| Conforms with UL | No |
| Conforms with FCC | No |
| Conforms with IC | No |
| EAC certificate available | No |
| Conforms with UKCA (Importer) | Yes (WERMA (UK) Ltd.) |
| Conforms with CMIM | No |
| Conforms with AS-I | No |
| Conforms with DNV | No |
| Conforms with RoHS CN | 25 years |
| Conforms with VdS | No |

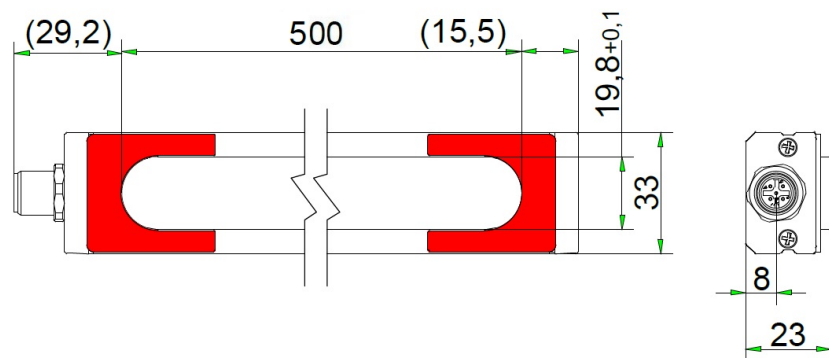


For additional installation and mounting information, refer to the appropriate user guide at www.werma.com. This printed copy is for information only and is subject to alteration.

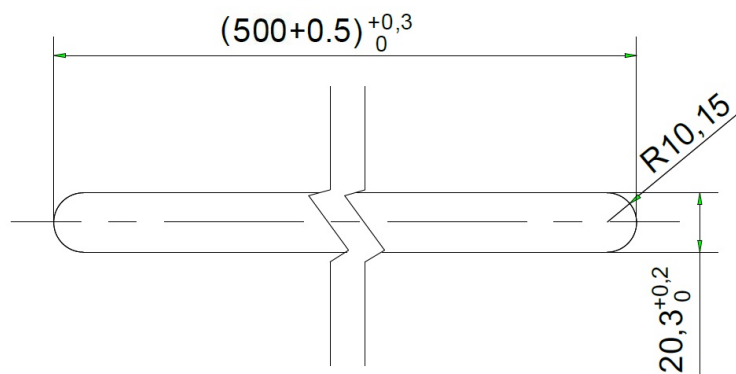
LineLIGHT Fusion 500 24V RGB Tape

DRAWING

Unit:mm



Mounting Diagram_Tape



For additional installation and mounting information, refer to the appropriate user guide at www.werma.com. This printed copy is for information only and is subject to alteration.