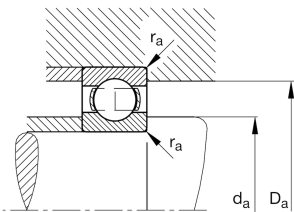
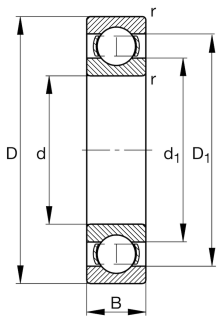
**FAG****6315-M-C3**

Deep groove ball bearing

Deep groove ball bearing 63...-M, single row,
solid brass cage

Technical information



Your current product variant

Sealing	Without	Not sealed
Cage	M	Solid brass cage, rolling element guided
Tolerance class	PN	Normal (PN)
Dimensional / heat stabilization	S0	Rings dimensional stabilized up to 150°
Lubricant	Without	Bearing not greased
Radial internal clearance	C3 (Group 3)	Internal clearance larger than CN
Bore type	Z	Cylindrical

Main Dimensions & Performance Data

d	75 mm	Bore diameter
D	160 mm	Outside diameter
B	37 mm	Width
C _r	123,000 N	Basic dynamic load rating, radial
C _{0r}	77,000 N	Basic static load rating, radial
C _{ur}	4,850 N	Fatigue load limit, radial
n _G	8,200 1/min	Limiting speed
n _{gr}	5,800 1/min	Reference speed
≈m	3.75 kg	Weight



Mounting dimensions

$d_{a\min}$	87 mm	Minimum diameter shaft shoulder
$D_{a\max}$	148 mm	Maximum diameter of housing shoulder
$r_{a\max}$	2.1 mm	Maximum fillet radius

Dimensions

r_{\min}	2.1 mm	Minimum chamfer dimension
D_1	133.34 mm	Shoulder diameter outer ring
d_1	101.77 mm	Shoulder diameter inner ring

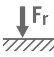
Temperature range

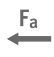
T_{\min}	-30 °C	Operating temperature min.
T_{\max}	150 °C	Operating temperature max.


Calculation factors


f_0	13.2	Calculation factor
-------	------	--------------------


Characteristics


- 

Radial load
- 

Axial load in one direction
- 

Axial load in two directions
- 

Grease Lubrication
- 

Oil Lubrication
- 

Not sealed