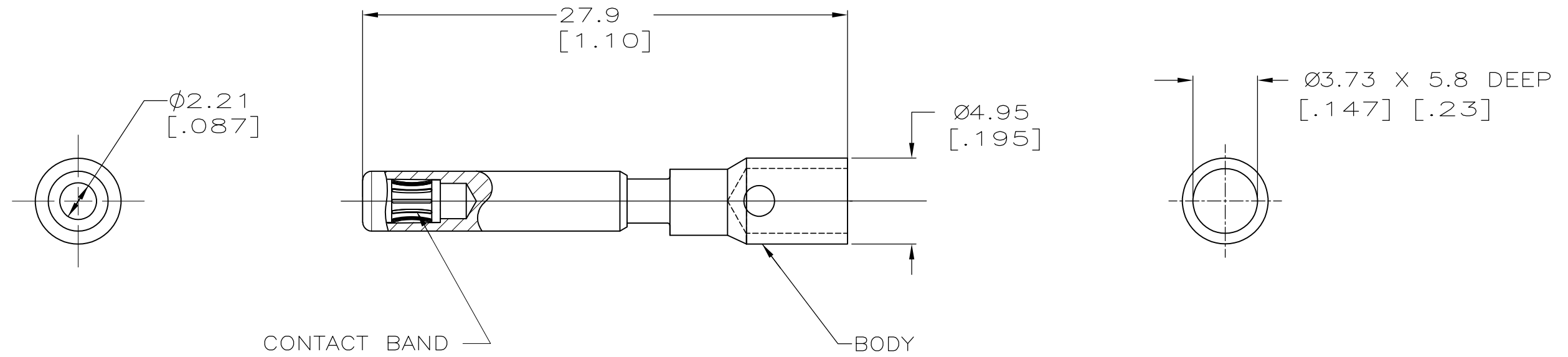


| LOC | DIST | REVISIONS | | | |
|-----|------|-------------|---------------------------|---------|--------|
| P | LTR | DESCRIPTION | DATE | DWN | APVD |
| CH | 11 | C2 | REVISED PER ECO-11-010839 | 25MAY11 | RK HMR |

- 1 MATERIAL- BODY: COPPER ALLOY
BAND: BeCu
- 2 FINISH- BODY AND BAND: 5.08μM[.000200] SILVER
OVER 1.02μM[.000040] NICKEL.
- 3. WIRE BARREL WILL ACCEPT #10 AWG WIRE.
- 4. MATES WITH AMP PART NUMBER 193796-1.



193797-1
PART NO

| | | | | | | |
|---|--|-----------------------------|--|-----------|------------|---------------|
| THIS DRAWING IS A CONTROLLED DOCUMENT. | | DWN J.TURNER 06-03-93 | TE Connectivity | | | |
| DIMENSIONS: mm[INCHES] | | CHK ALG 11-17-93 | | | | |
| TOLERANCES UNLESS OTHERWISE SPECIFIED: 0 PLC ± - 1 PLC ± 0.5[.02] 2 PLC ± 0.25[.010] 3 PLC ± - 4 PLC ± - ANGLES ± - | | APVD SRS 11-17-93 | NAME SOCKET ASSY, LOUVERTAC, NO 10 AWG, UNIVERSAL MATE-N-LOK* II | | | |
| MATERIAL | | PRODUCT SPEC | SIZE | CAGE CODE | DRAWING NO | RESTRICTED TO |
| FINISH | | APPLICATION SPEC | A3 | 00779 | C-193797 | - |
| 1 | | WEIGHT | CUSTOMER DRAWING | | SCALE | SHEET |
| 2 | | NONE | | 1 of 1 | REV | C2 |

*MATE-N-LOK IS A TRADEMARK