

Features

- **Temperature characteristics:** $|\Delta C/C| \leq 30\%$, $ESR \leq$ specified $ESR(25^{\circ}C)$ at $+70^{\circ}C$; $\Delta C/C \leq 50\%$, $ESR \leq 4$ times of specified $ESR(25^{\circ}C)$ at $-25^{\circ}C$
- **High temperature load:** $\Delta C/C \leq 30\%$, $ESR \leq 4$ times of specified $ESR(25^{\circ}C)$ at $+70^{\circ}C/1000hrs/5V$
- **High temperature storage:** $|\Delta C/C| \leq 30\%$, $ESR \leq 2$ times of specified $ESR(25^{\circ}C)$ at $+70^{\circ}C/1000hrs$
- **Hygrothermal characteristics:** $+40^{\circ}C$, 90--95%RH, 240h, $|\Delta C/C| \leq 30\%$, $ESR \leq 4$ times of specified $ESR(25^{\circ}C)$

RS PRO Super Capacitors

RS Stock No.: 0360053



RS Professionally Approved Products bring to you professional quality parts across all product categories. Our product range has been tested by engineers and provides a comparable quality to the leading brands without paying a premium price.

Product Description

- *Applications they are most suited for RTC, fault indicator, tachograph, DTu, toys (toy cars, toy planes), intelligent three meter, cycle rear light, radio, electronic door lock, digital frame, set top box, remote control, tax control machine, controller (temperature controller), punch in machine, counter, bus card reader, identification, vehicle monitoring.*

General Specifications

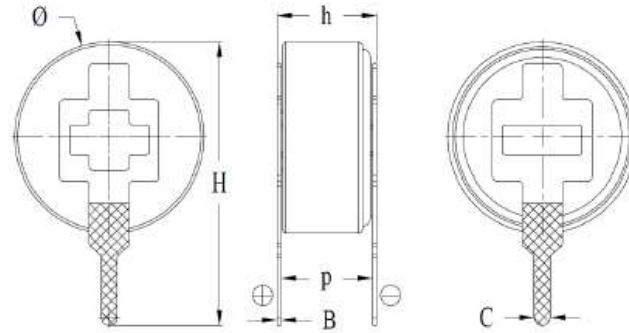
Model	0360053
Rated discharge capacitance	0.1F
Capacitance tolerance	-20 % ~ + 80 %
Rated voltage	5.5V
Nominal impedance: AC Imp @1kHz	50 Ω
Nominal impedance: DC Imp	75 Ω
Weight	1.4g (typical value)
Maximum peak current (1 s)	32mA
Leakage current (24 h)	≤ 0.005 mA
Working temperature range	-40 ~ 70 $^{\circ}\text{C}$
Storage temperature range	-40 ~ 85 $^{\circ}\text{C}$
Cycle life	25 $^{\circ}\text{C}$, rated voltage-half rated voltage>500000 cycles, Δ C/C \leq 30%, ESR \leq 4 times of specified ESR
Quantities per Tray	150pcs

Approvals

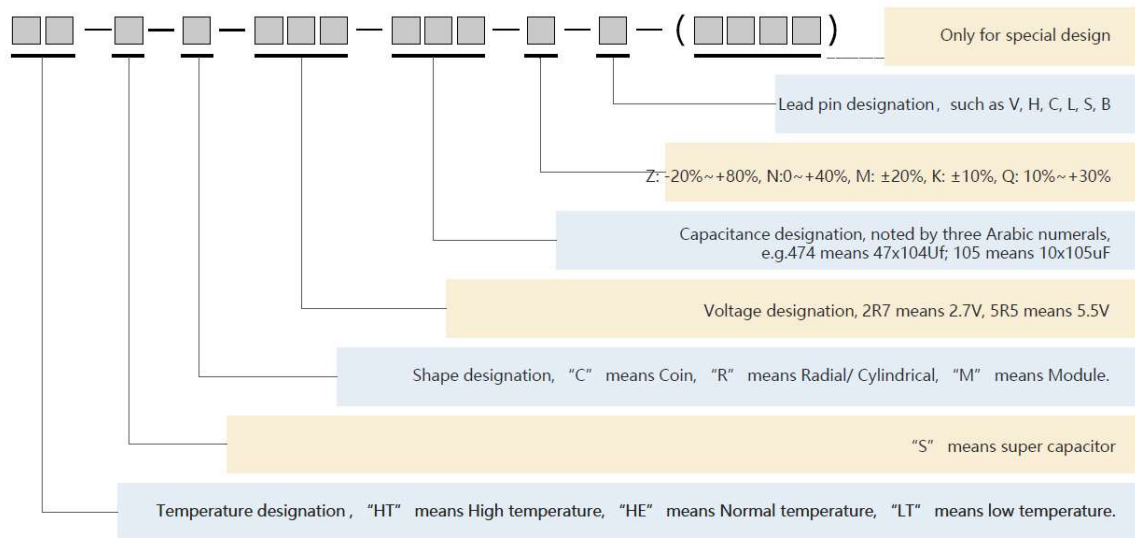
Standards Met	ROHS/REACH
---------------	------------

Similar Products

Stock No.	Brand	Product Name	Rated discharge capacitance	Rated voltage	Shape Designation
0360048	RS PRO	Super Capacitor	0.1F	5.5V	Coin
0360049	RS PRO	Super Capacitor	0.1F	5.5V	Coin
0360050	RS PRO	Super Capacitor	0.1F	5.5V	Coin
0360051	RS PRO	Super Capacitor	0.1F	5.5V	Coin
0360053	RS PRO	Super Capacitor	0.1F	5.5V	Coin
0360054	RS PRO	Super Capacitor	0.22F	5.5V	Coin
0360055	RS PRO	Super Capacitor	0.22F	5.5V	Coin
0360057	RS PRO	Super Capacitor	0.33F	5.5V	Coin
0360058	RS PRO	Super Capacitor	0.33F	5.5V	Coin
0360060	RS PRO	Super Capacitor	0.33F	5.5V	Coin
0360061	RS PRO	Super Capacitor	4F	5.5V	Coin
0360063	RS PRO	Super Capacitor	4F	5.5V	Coin
0360064	RS PRO	Super Capacitor	0.47F	5.5V	Coin
0360066	RS PRO	Super Capacitor	0.47F	5.5V	Coin
0360067	RS PRO	Super Capacitor	10F	2.7V	Radial
0360069	RS PRO	Super Capacitor	150F	2.7V	Radial
0360070	RS PRO	Super Capacitor	150F	2.7V	Radial



项目 / Item	标准 / Criteria	项目 / Item	标准 / Criteria
Φ	$11.5 \pm 0.5 \text{ mm}$	H	$16.5 \pm 0.5 \text{ mm}$
h	$5.0 \pm 0.5 \text{ mm}$	P	$4.5 \pm 0.5 \text{ mm}$
B	$0.20 \pm 0.05 \text{ mm}$	C	$0.8 \pm 0.1 \text{ mm}$



HESC5R5105Z-L means coin super capacitor 5.5V 1F V at normal temperature

Connection Diagrams / Assembly Diagrams / Illustrations / Accessories