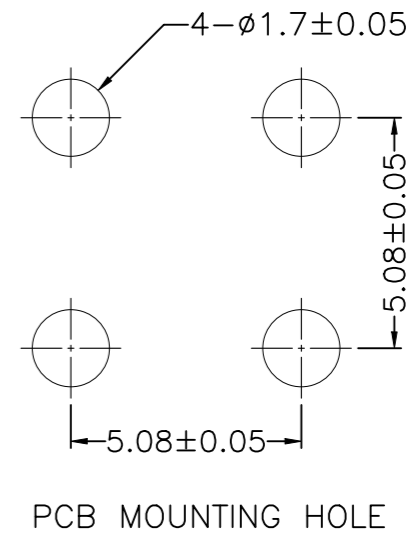
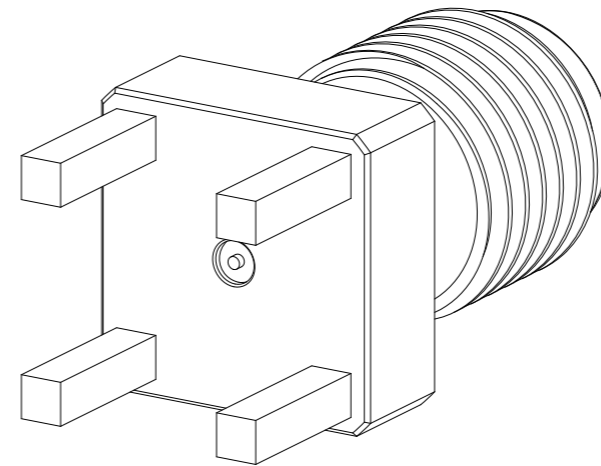
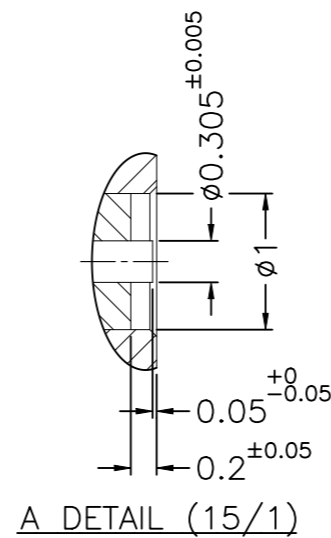
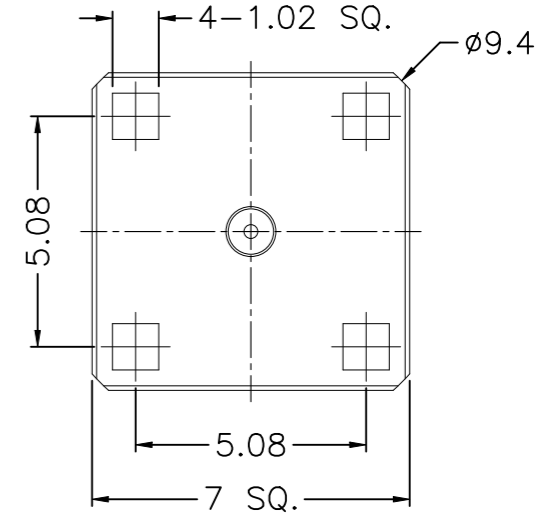
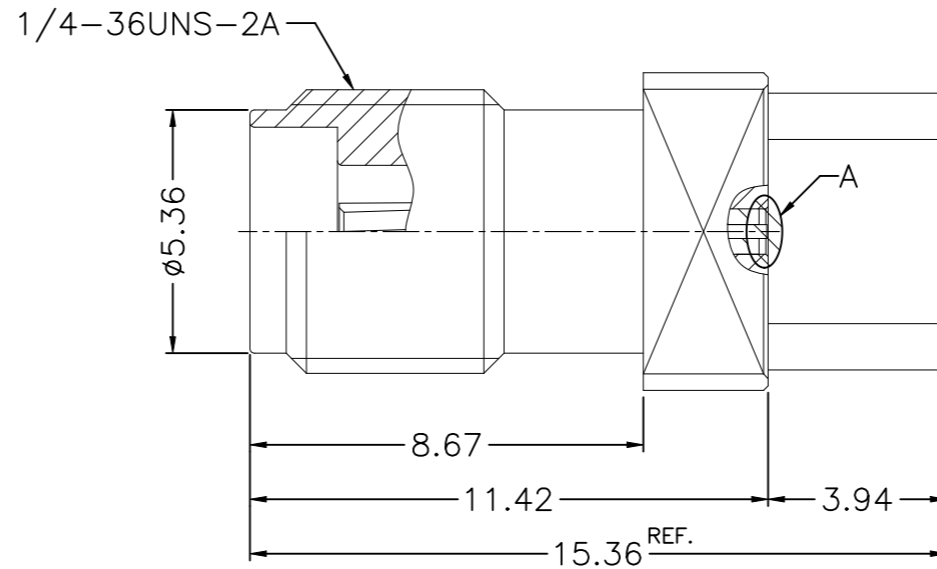


REVISIONS

P	LTR	DESCRIPTION	DATE	DWN	APVD
	A1	REVISED AS PER ECN-26-362050	17DEC2025	YS	WZ

MATERIALS AND PLATING THICKNESS UNIT: MICRO-INCHES (MINIMUM)		
PART NAME	MATERIALS	PLATING
BODY	BRASS	SEE TEPN LIST
INSULATOR	PTFE	N/A
CONTACT PIN	BeCu	SEE TEPN LIST
ELECTRICAL CHARACTERISTICS		
IMPEDANCE	50 Ω	
VOLTAGE RATING	330 VRMS	
FREQUENCY RANGE	DC~40GHz	
DIELECTRIC WITHSTANDING VOLTAGE	500 VRMS Min	
CONTACT RESISTANCE	CENTER CONTACT	3.0 mΩ Max
	OUTER CONTACT	2.0 mΩ Max
INSULATION RESISTANCE	5000 MΩ Min	
INSERTION LOSS	0.4dB Max(DC-40GHz)	
VSWR	1.3 Max(DC-40GHz)	
MECHANICAL CHARACTERISTICS		
DURABILITY	500 cycles Min	
ENGAGEMENT FORCE	0.23N.m Max	
DISENGAGEMENT FORCE	0.23N.m Max	
ENVIRONMENTAL PARAMETER		
TEMPERATURE RANGE	-65 °C~+165 °C	
THERMAL SHOCK	MIL- STD 202, Meth. 107,Cond. B	
VIBRATION	MIL- STD 202, Meth. 204,Cond. D	
SHOCK	MIL- STD 202, Meth. 213,Cond. I	
CORROSION	MIL- STD 202, Meth. 101,Cond. B	



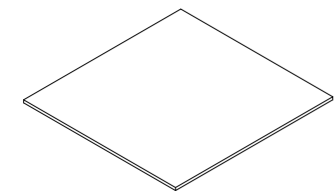
NOTES:
 1 TRAY PACKAGING,DETAIL PACKAGING IS IN PAGE 2;
 2 ALL DIMENSIONS ARE NOMINAL FOR REFERENCE ONLY UNLESS OTHERWISE STATED;
 3 RoHS: COMPLIANT.

GOLD 3μIN/ELECTROLESS NICKEL 100μIN	GOLD 3μIN/ELECTROLESS NICKEL 100μIN	2523302-1
PLATING OF BODY	PLATING OF CONTACT PIN	PART NUMBER

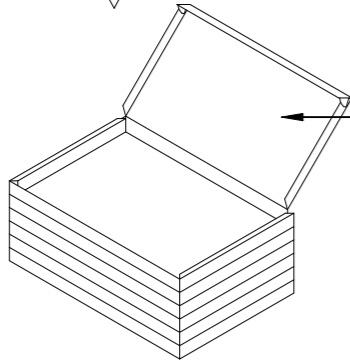
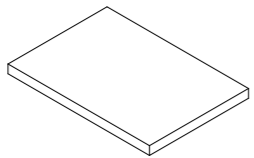
THIS DRAWING IS A CONTROLLED DOCUMENT.		DWN ED 02SEP2025	TE Connectivity Ltd. NAME: 2.92mm JACK PCB MOUNT				
DIMENSIONS: mm		CHK TP 02SEP2025					
TOLERANCES UNLESS OTHERWISE SPECIFIED:		APVD ED 02SEP2025					
0 PLC ± 0.3 1 PLC ± 0.2 2 PLC ± 0.1 3 PLC ± 0.05 4 PLC ± - ANGLES ± -		PRODUCT SPEC -					
MATERIAL -		FINISH -	APPLICATION SPEC -	SIZE A3	CAGE CODE 00779	DRAWING NO C-2523302	RESTRICTED TO -
CUSTOMER DRAWING			WEIGHT 0	SCALE 1:1	SHEET 1 OF 3	REV A1	

DETAIL TRAY PACKAGING SPEC

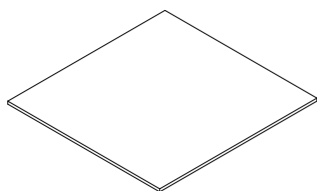
REVISIONS					
P	LTR	DESCRIPTION	DATE	DWN	APVD
-	-	SEE SHEET 1	-	-	-



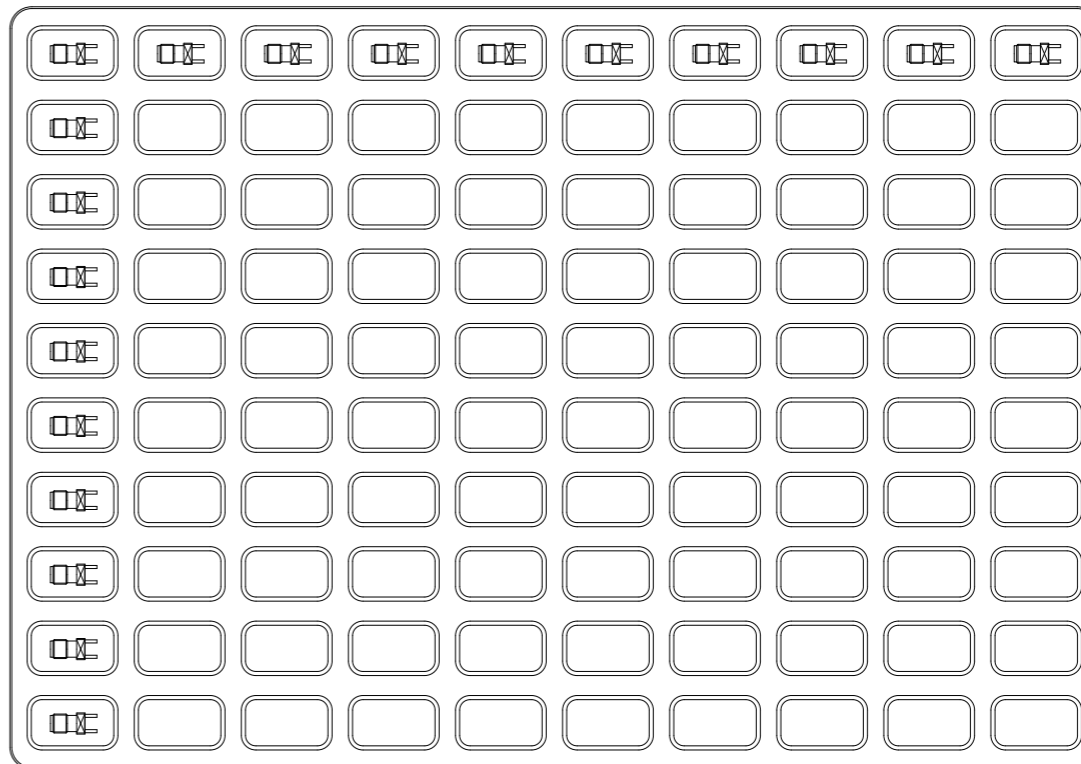
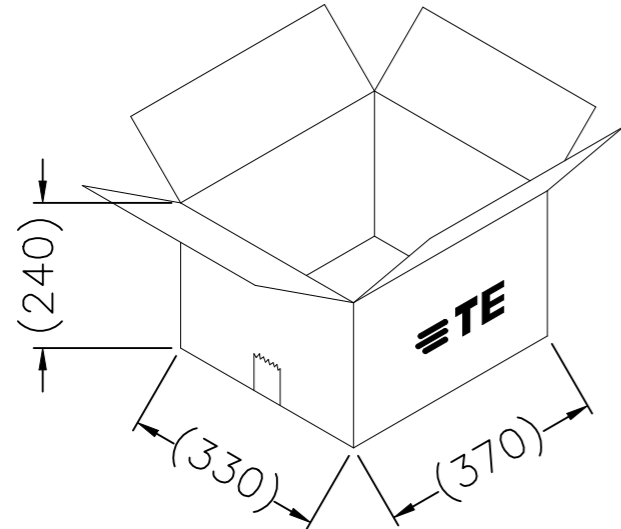
← Place a cardboard on the top of the boxes.




← Pack 100 pcs per tray. There is 1 tray per inner box, total of 3 inner boxes.



← Place a cardboard on the bottom of the boxes.

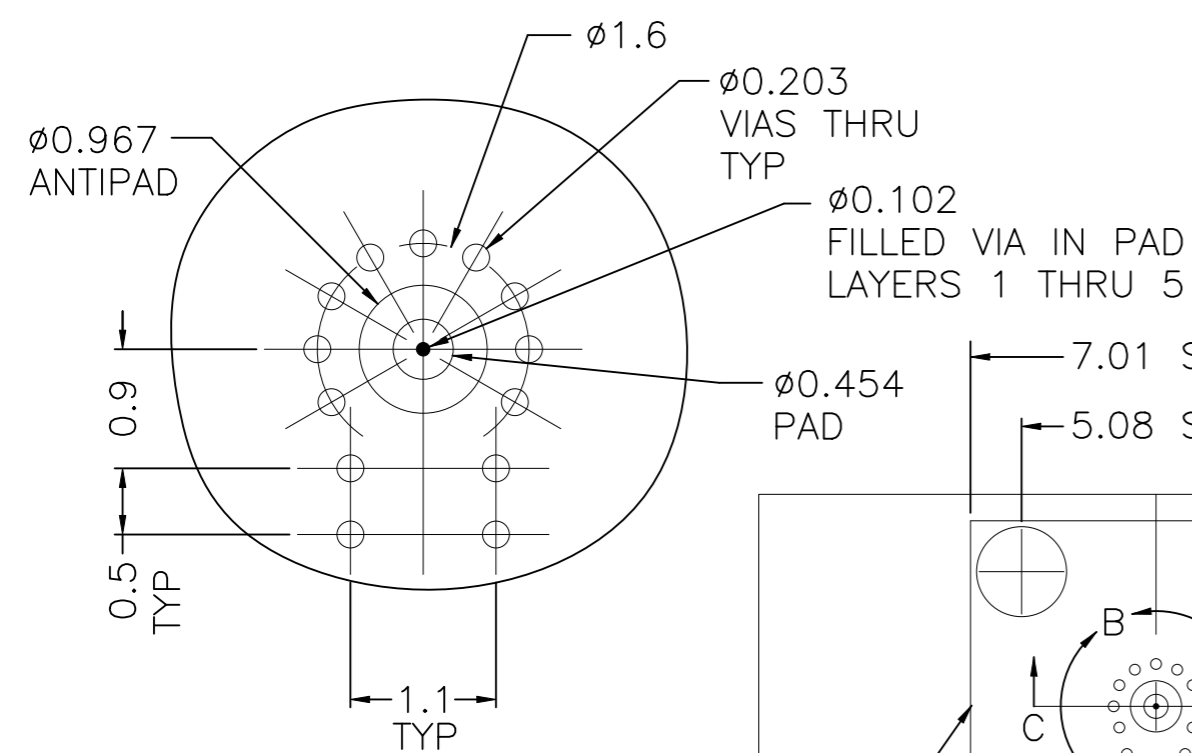


NOTE: 1. 100 pcs / Tray, 1 tray = 1 inner box
2. 3 inner box = 300 pcs

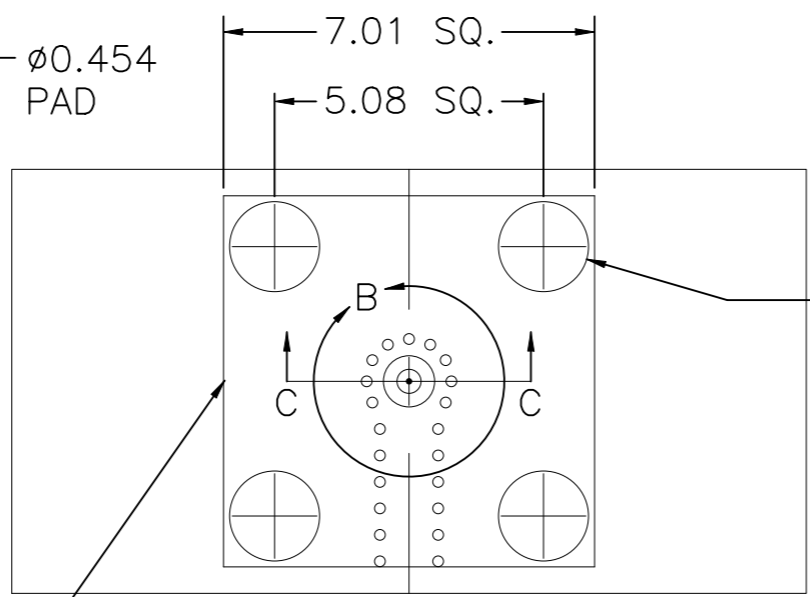
THIS DRAWING IS A CONTROLLED DOCUMENT.		DWN	02SEP2025		 TE Connectivity Ltd.	
		ED				
		CHK	02SEP2025			
		TP			NAME	
		APVD	02SEP2025			
		ED			2.92mm JACK PCB MOUNT	
		PRODUCT SPEC				
		-			-	
		APPLICATION SPEC				
		-			RESTRICTED TO	
		-				
		SIZE	CAGE CODE	DRAWING NO	-	
		A3	00779	C-2523302		
		CUSTOMER DRAWING			SCALE	1:1
					SHEET	2 of 3
					REV	A1

PCB LAYOUT FOR REFERENCE

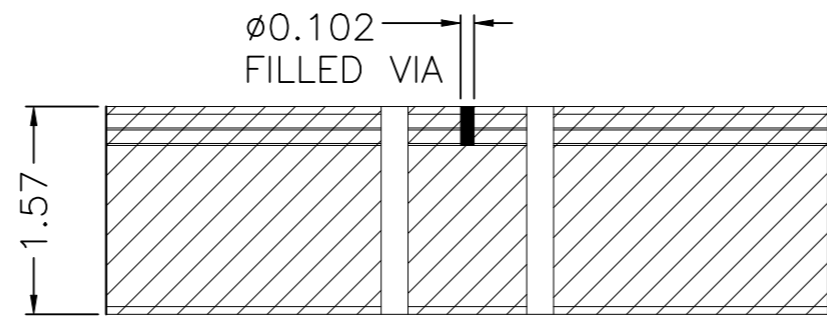
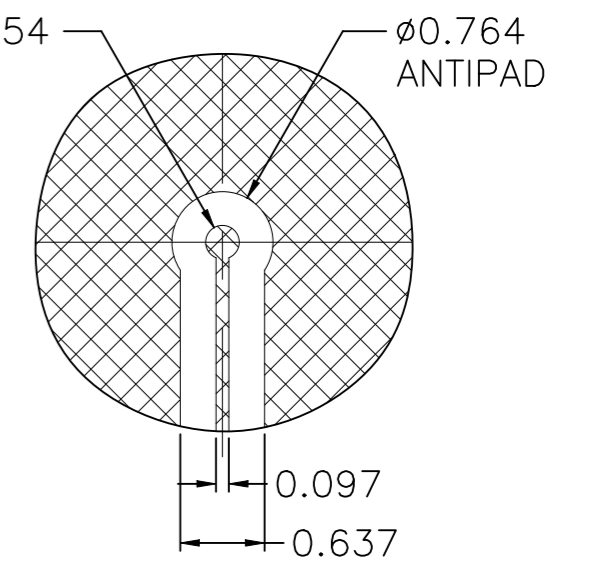
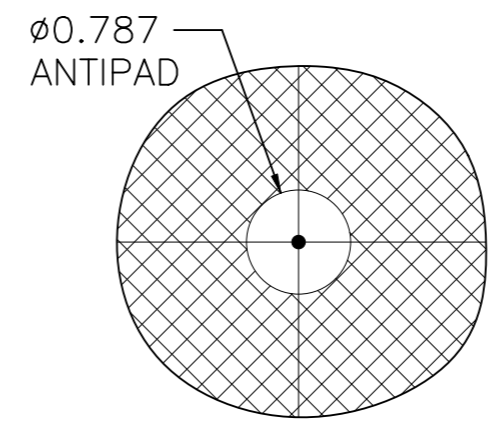
REVISIONS					
P	LTR	DESCRIPTION	DATE	DWN	APVD
-	-	SEE SHEET 1	-	-	-



B DETAIL (12.5/1)
LAYER 1 (CU)

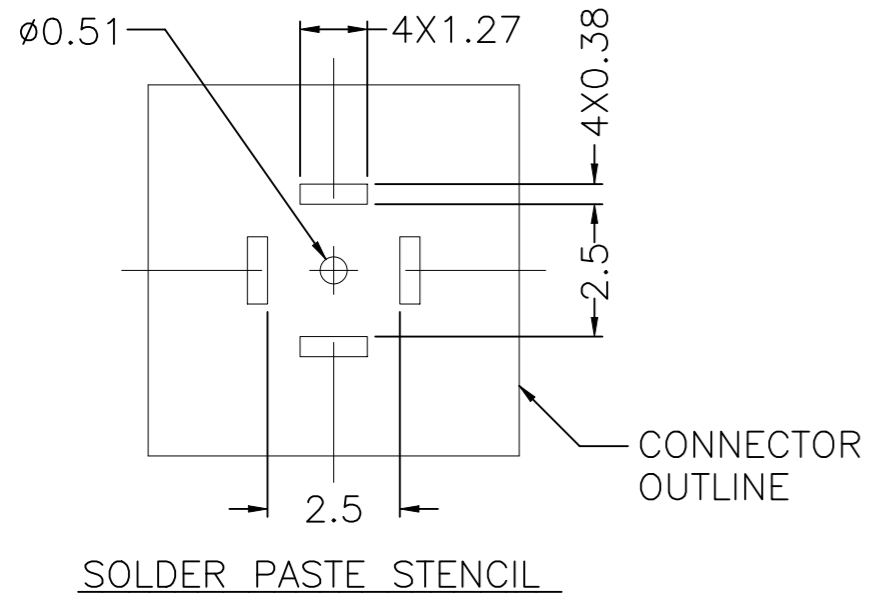


CONNECTOR OUTLINE



- LAYER 1 : CU, 0.058mm
- LAYER 2 : DIEL (PREPREG), 0.104mm
- LAYER 3 : CU, 0.015mm
- LAYER 4 : DIEL (CORE), 0.102mm
- LAYER 5 (SIGNAL) : CU, 0.015mm

PCB LAYOUT
(FOR REFERENCE ONLY)



THIS DRAWING IS A CONTROLLED DOCUMENT.		DWN	ED	02SEP2025	TE Connectivity Ltd.		
		CHK	TP	02SEP2025			
		APVD	ED	02SEP2025	NAME		
		PRODUCT SPEC			2.92mm JACK PCB MOUNT		
		APPLICATION SPEC			-		
		WEIGHT	0	SIZE	A3	CAGE CODE	00779
		CUSTOMER DRAWING			DRAWING NO	C-2523302	
					RESTRICTED TO	-	
					SCALE	1:1	SHEET
					3 OF 3		REV
					A1		