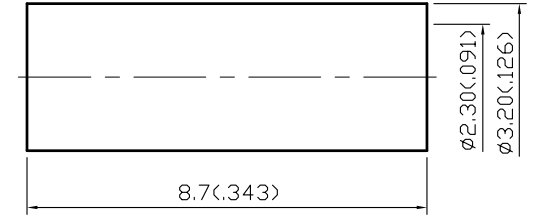
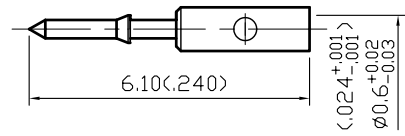
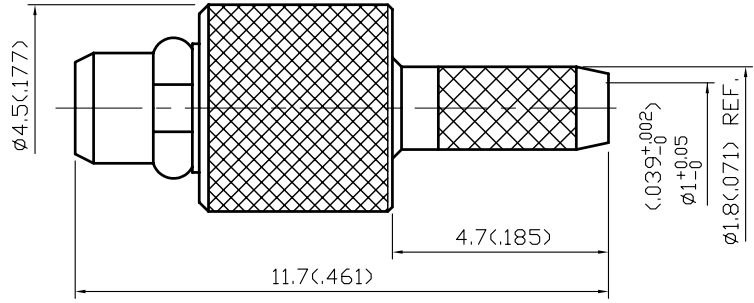


NO	DESCRIPTION	DATE
①	BERYLLIUM COPPER → BRASS	11.01.03
②	MODIFICATION 4.1	10.19.04
③	MODIFICATION INSULATION ③ CHASSIS ④	04.11.05



1.0 ELECTRICAL

- 1.1 FREQUENCY RANGE: DC-6 GHz
- 1.2 NOMINAL IMPEDANCE: 50 OHMS
- 1.3 WORKING VOLTAGE: 170 VOLTS MAX.
- 1.4 PROOF VOLTAGE: 500 VOLTS
- 1.5 VSWR: 1.22 MAX.

2.0 MATERIALS

- 2.1 BODIES: BRASS PER JIS-C3604
BERYLLIUM COPPER PER ASTM B196 UNS C17300
- 2.2 CENTER CONTACT: BRASS PER JIS-C3604
- 2.3 INSULATION: TEFLON PER ASTM D1457 AND ASTM D1710
- 2.4 CRIMP FERRULE: BRASS PER JIS-C2700

3.0 FINISHES AND OTHERS

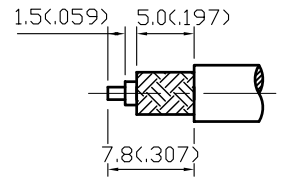
3.1 SEE BELOW TABLE FOR DETAILS.

4.0 MECHANICAL

- 4.1 INTERFACE IN ACCORDANCE WITH: BS EN 122340 ②
- 4.2 FOR USE WITH RG178U OR SIMILAR STYLE CABLE
- 4.3 CABLE ATTACHMENT: OUTER: CRIMP, INNER: SOLDER
- 4.5 CABLE RETENTION 6 lbs MIN.
- 4.6 CRIMP SIZE REQUIRED: CONTACT: SOLDER
FERRULE: 2.8(.110) HEX. CRIMP TOOL

5.0 ENVIRONMENTAL

5.1 OPERATING TEMPERATURE RANGE: -55° C TO +155° C



STRIPPING DIMENSION

APPROVED by _____ DATE: _____ 6559996

6	CRIMP FERRULE	BRASS	1	GOLD
5	CENTER CONTACT	BRASS	1	GOLD 30 μ" MIN.
4	CHASSIS	BRASS	1	GOLD 3 μ" MIN.
3	INSULATION	TEFLON	1	NONE
2	BODY	BRASS	1	GOLD 3 μ" MIN.
1	WASHER	BERYLLIUM COPPER	1	GOLD 3 μ" MIN.
NO	DESCRIPTION	MATERIAL	Q'TY	FINISH



DESCRIPTION		MMCX STRAIGHT PLUG FOR RG178U					
製圖	DRAWN	TOLERANCE	品名	37-01-6/ROHS COMPLIANT 178U (50Ω)	DATE	版次	REV.
	Elvis	.X ±0.2	TITLE				
檢圖	CHECK	.XX ±0.1	單位	DWG.NO.	37-0033		
	Lewis	.XXX ±0.05	mm(in)			SCALE	8:1
認定	APPROV	.XXX ±0.05	比例				
	Lewis	ANGLE ±5°					