

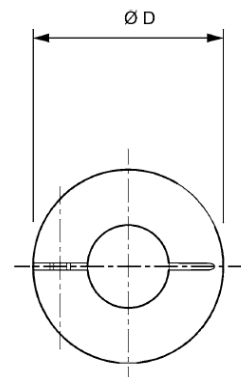
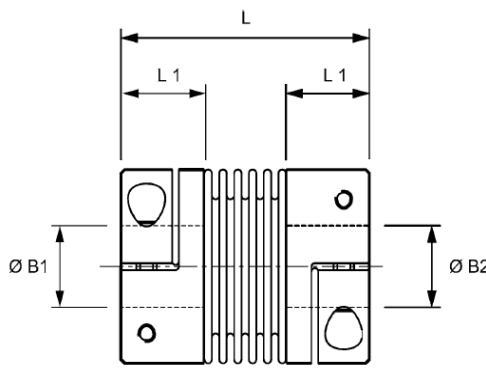
Bellows Couplings HucoFlex K



Bellows Coupling with removable clamp shaft connection, short version

ORDERING INFORMATION

RS PART No.	MANUFACTURER PART No.	BORES B1 & B2 [mm]
1967692	592.82.4949	22
1967693	592.82.5252	25
1967694	592.82.5253	28
1967695	592.82.5254	32
1967696	592.82.6060	35
1967697	592.82.6161	38
1967698	592.82.6565	42



DIMENSIONS & INTERFACE DATA

Overall Diameter D [mm]	82
Overall Length L [mm]	91
Maximum permissible bore B1. B2 [mm]	42
Length of supported bore L1 [mm]	33.5
Fastener thread size	M10
Fastener tightening torque [Nm]	84
Coupling approx weight [g]*	1150

PERFORMANCE DATA

Maximum speed [min^{-1}]	6900
Peak Torque [Nm]	150
Maximum shaft angular misalignment [deg]	1.5
Maximum shaft radial misalignment [mm]	0.2
Maximum shaft axial displacement [mm]	0.5
Torsional Stiffness [$\text{Nm} \cdot \text{rad}^{-1}$]	128000
Radial Stiffness [N/mm]	1200
Axial Stiffness [N/mm]	80

MATERIALS

Hubs **Aluminium alloy**
 Bellows **Spring Quality**
Stainless Steel
 Fasteners **Alloy Steel**

Temperature Range

-30°C to +120°C

*weight with max. bore