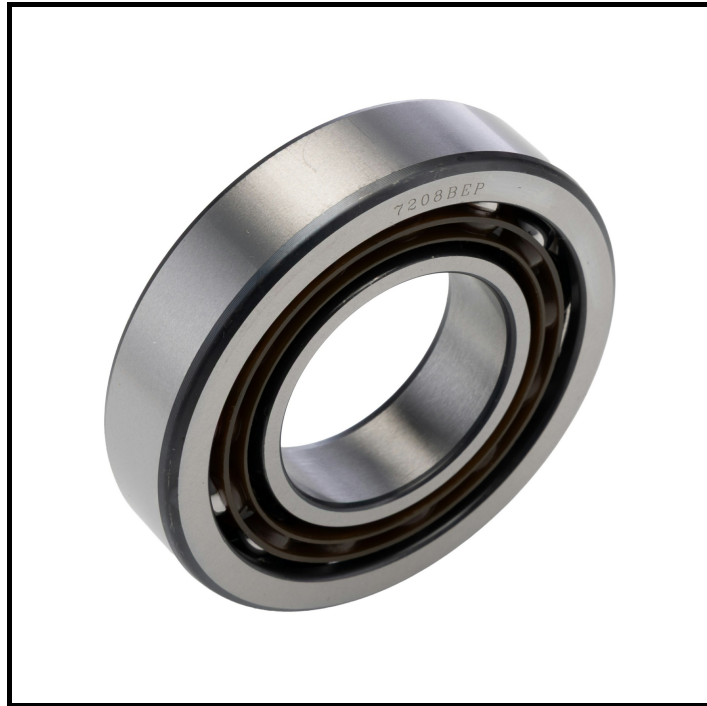


## FEATURES

- **Single Row Angular Contact Design:** Provides high precision and supports both radial and axial loads
- **Polymer Cage Material:** Reduces friction and wear, extending the bearing's service life
- **Steel Ball Material:** Ensures durability and resistance to deformation under load
- **40° Contact Angle:** Optimises load-carrying capacity and increases bearing life
- **Dynamic Load Rating of 34.5 kN:** Suitable for demanding applications with high dynamic loads
- **Limiting Speed of 10000 rpm:** Allows for high-speed operation without compromising performance
- **Open End Type:** Facilitates easy inspection and maintenance

## RS PRO 40mm Single Row Angular Contact Ball Bearing, 80mm OD

RS Stock No: 291-632



RS Professionally Approved Products bring to you professional quality parts across all product categories. Our product range has been tested by engineers and provides a comparable quality to the leading brands without paying a premium price

## Product Description

This RS PRO single row angular contact ball bearing is designed for high-speed and high-precision applications. With a 40 mm inside diameter and 80 mm outside diameter, it is ideal for use in machinery where space is limited and performance is critical. The bearing's open end type allows for easy maintenance and lubrication, enhancing its operational lifespan.

## General Specifications

Ball Material	Steel
Bearing Type	Single Row Angular Contact Ball
Bore Type	Parallel
Cage Material	Polymer
Contact Angle	40 °
Dynamic Load Rating	34.5 kN
End Type	Open
Internal Clearance	CN
Limiting Speed	10000 rpm
Number of Rows	1
Product Type	Ball Bearing
Race Material	Steel
Race Type	Plain
Race Width	18 mm
Static Load Rating	24 kN

## Mechanical Specifications

Inside Diameter	40 mm
Outside Diameter	80 mm

## Approvals

Standards/Approvals	ANSI-ESD S20.20:2021
---------------------	----------------------



