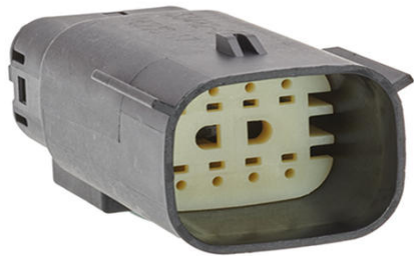




Part Number : [334824802](#)
Product Description : MX150 Mat-Sealed Male Connector Assembly, Dual Row, 8 Circuits, Keying Option B, without Connector Position Assurance, Light Gray
Series Number : 33482
Status : Active
Product Category : Connector Housings



Documents & Resources

Drawings

[334824802 sd.pdf](#)
[PK-31300-635-001.pdf](#)

3D Models and Design Files


[334824802 stp.zip](#)

Specifications

[AS-33472-100-001.pdf](#)
[AS-33472-100-CH-001.pdf](#)
[AS-33472-100-FR-001.pdf](#)
[PS-33472-000-001.pdf](#)

Product Environment Compliance

Compliance

GADSL/IMDS	Compliant
China RoHS	 per SJ/T 11365-2006
EU ELV	Compliant per 2000/53/EC
Low-Halogen Status	Low-Halogen per IEC 61249-2-21
REACH SVHC	Contains Dodecamethylcyclohexasiloxane; Decamethylcyclopentasiloxane; Octamethylcyclotetrasiloxane per D(2024)6225-DC (07 Nov 2024)

EU RoHS	Compliant per EU 2015/863
---------	---------------------------

Compliance Statements

- EU RoHS
- REACH SVHC
- Low-Halogen

Industry Documents

- IPC 1752A Class C
- IPC 1752A Class D
- Molex Product Compliance Declaration
- IEC-62474
- chemSHERPA (xml)

Substances of Interest

- PFAS

EU RoHS Certificate of Compliance

Additional Product Compliance Information

Part Details

General

Status	Active
Category	Connector Housings
Series	33482
Description	MX150 Mat-Sealed Male Connector Assembly, Dual Row, 8 Circuits, Keying Option B, without Connector Position Assurance, Light Gray
Application	Power, Wire-to-Wire, Automotive
Product Name	MX150
UPC	889056543606

Agency

UL	E29179
----	--------

Physical

Circuits (maximum)	8
Color - Resin	Gray (Light)
Gender	Plug

Glow-Wire Capable	No
Keying to Mating Part	Yes
Lock to Mating Part	Yes
Material - Resin	SPS/Nylon
Net Weight	11.385/g
Number of Rows	2
Packaging Type	Bag
Panel Mount	No
Pitch - Mating Interface	3.50mm
Polarized to Mating Part	Yes
Stackable	No
Temperature Range - Operating	-40° to +125°C

Mates With / Use With

Mates with Part(s)

Description	Part Number
MX150 Mat-Sealed Dual Row Female Connector Assemblies	<u>33472</u>

Use with Part(s)

Description	Part Number
MX150 Sealed Cavity Plug	<u>343450001</u>
MX150 Male Terminals	<u>33000</u>
MX150 Male Terminals	<u>33011</u>