

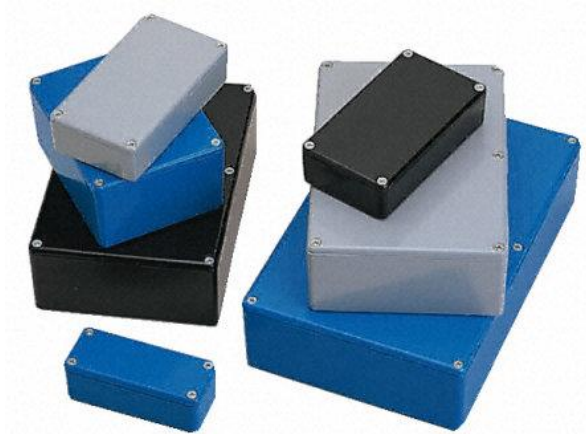


ENGLISH

Datasheet

Aluminium Enclosure, IP66, 250 x 250 x 100mm

RS Stock number 517-4241



Description:

IP65 Powder Coated

- Diecast aluminium alloy (LM2, BS1490)
- Provided with a neoprene self-adhesive seal which gives protection to IP65 when fitted
- Stainless steel M3.5 fixing screws
- Minimum wall thickness 1.6 mm

Specifications:

Colour:	Grey
Body Material:	Die Cast Aluminium
External Dimensions:	250 (length) x 250 (width) x 100 (height)mm
IP Rating:	IP66
Lid Colour:	Grey

