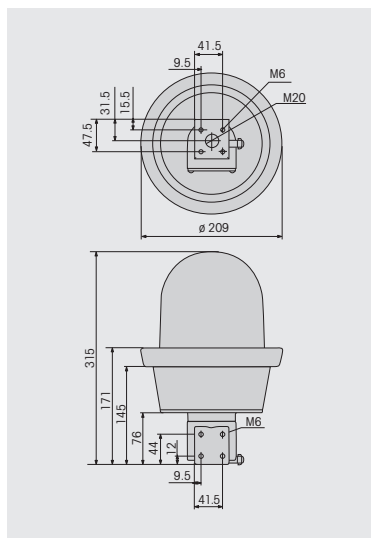




Ex LED Rotating Beacon
with wire guard (accessory)



- Suitable for use in gas and dust explosion endangered areas (Zone 1 and 2, Zone 21 and 22)
- Wear-free thanks to the absence of any moving mechanical components
- Intense rotating signal effect with low power consumption
- Connection area "e" for simple connection
- Can be mounted as required
- Saltwater-resistant

Life duration
up to 50,000 hrs

TECHNICAL SPECIFICATIONS:

Dimensions (Diameter x Height):	195 mm x 305 mm
Housing:	Aluminium
Dome:	Reinforced borosilicate glass
Mounting Plate:	VA stainless steel
Connection:	Screwable connection max. 2.5 mm ²
Cable entry:	Cable gland M 20 x 1.5 mm Cable diameter 5 – 13 mm
Connection area:	Increased Safety "e"
Installation position:	as required
Fixing:	Base mounting, bracket mounting (accessory), tube mounting (accessory)
Rotation rate:	c. 180 r.p.m.
Life duration:	up to 50,000 hrs
Duty cycle:	100 %
Explosion protection:	Ex II 2G Ex de IIC T6 Ex II 2D Ex tD A21 IP 66 T 80 °C
Approval:	PTB 06 ATEX 1039

ORDER SPECIFICATIONS:

Voltage	24 V =	115-230 V ~
Current consumption	150 mA	70-180 mA
red	782 120 55	782 120 68
yellow	782 320 55	782 320 68

ACCESSORIES:

Wire guard	975 783 01
Mounting plate	975 783 02
Clamp for tube mounting 1 1/4"	975 783 03
Clamp for tube mounting 1 1/2"	975 783 04
Clamp for tube mounting 2"	975 783 05
Bracket	975 783 06

(Accessories see page 28)



Generates a distinctive rotating
signal by triggering high output
LED in sequence

