



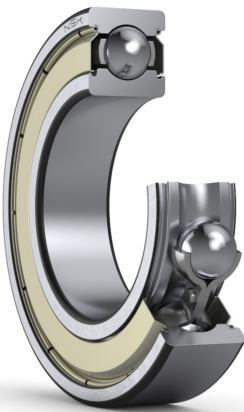
PRODUCT DATASHEET

Datasheet creation date: 2025/07/08 2:17 (UTC)



6007ZZ

Single-Row Deep Groove Ball Bearings



Boundary Dimensions

d	35	mm	Bore diameter
D	62	mm	Outside diameter
B	14	mm	Width
r (min.)	1	mm	Chamfer dimension

Basic Load Ratings

Cr	17600	N	Basic dynamic load rating
C0r	10300	N	Basic static load rating

Speeds

Grease	13000	min-1	Grease lubrication
--------	-------	-------	--------------------

Abutment and Fillet Dimensions

da (min.)	40	mm	Diameter of shaft abutment
da (max.)	41.5	mm	Diameter of shaft abutment
Da (max.)	57	mm	Diameter of housing abutment
ra (max.)	1	mm	Radius of shaft or housing fillet

Calculation factors

fo	14.8		Factor
----	------	--	--------

Additional information

z	11		Number of Balls
Dw	7.938	mm	Ball Diameter

Mass

Mass approx.	0.151	kg	Mass approx.
--------------	-------	----	--------------

