

Han 1A-2+PE-s-m

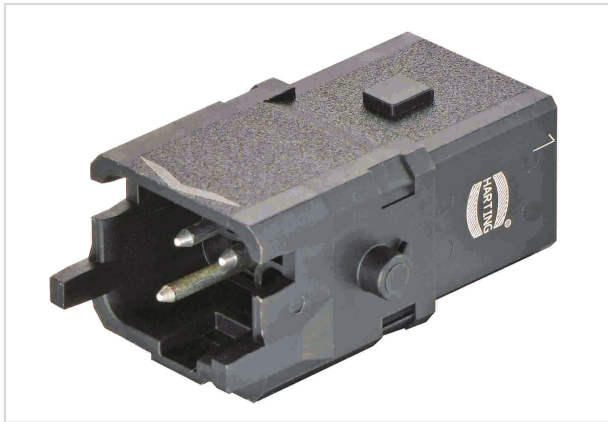


Image is for illustration purposes only. Please refer to product description.

| | |
|--------------------|---------------------------------------------------------------------------------------|
| Part number | 09 10 002 2606 |
| Specification | Han 1A-2+PE-s-m |
| HARTING eCatalogue | https://b2b.harting.com/09100022606 |

Identification

| | |
|----------|---------------------|
| Category | Inserts |
| Series | Han [®] 1A |

Version

| | |
|--------------------|--------------------------------------------------------------------------------------------------------------------------------|
| Termination method | Screw termination |
| Gender | Male |
| Size | 1 A |
| Number of contacts | 2 |
| PE contact | Yes |
| Locking type | Single locking lever |
| Details | Please order locking lever separately. Order separately the single wire seal or the hoods/housings for an IP65 performance. |

| | |
|---------|-------------------------------------------------------------------------------------------------------------------------------------------------------------------------------------------------------------------------------------------------------------------------------------------------------------------------------------------------------------------------------------------------------------------------------------------------------------------|
| Details | A Han [®] 1A configuration that only consists of inserts (with or without strain relief, 09 10 000 5300) is an unenclosed connector according to IEC 61984. In this case protection against electric shock must be provided by the installation methods of the user. |
| Details | Contact inserts must not be coupled or decoupled under electrical load. Contact inserts must not be powered-up in the un-mated condition. Contact inserts with screw termination technology (2+PE and 3+PE) only differ in the number of contacts. If both variants are used in one application, the user must prevent incorrect mating! Safety instructions according to VDE 0100-410, Chapter 414.4.3 and EN 60204-1, Chapter 13.4.5 d) must be observed. |

Technical characteristics

| | |
|-------------------------|------------------------------|
| Conductor cross-section | 0.75 ... 1.5 mm ² |
| Rated current | 10 A |



Pushing Performance
Since 1945

Technical characteristics

| | |
|----------------------------------------|--------------------|
| Rated voltage conductor-earth | 230 V |
| Rated voltage conductor-conductor | 400 V |
| Rated impulse voltage | 4 kV |
| Pollution degree | 3 |
| Rated current acc. to UL | 10 A @ AWG 16 |
| Rated voltage acc. to UL | 250 V |
| Insulation resistance | >10 ⁸ Ω |
| Tightening torque | 0.25 Nm |
| Limiting temperature | -30 ... +90 °C |
| Mating cycles | ≥100 |
| Degree of protection acc. to IEC 60529 | IP20 |

Material properties

| | |
|-------------------------------------------|--------------------------------------------------------|
| Material (insert) | Polyamide (PA) |
| Colour (insert) | RAL 9005 (jet black) |
| Material (contacts) | Copper alloy |
| Surface (contacts) | Silver plated |
| Material flammability class acc. to UL 94 | V-0 |
| RoHS | compliant with exemption |
| RoHS exemptions | 6(c): Copper alloy containing up to 4 % lead by weight |
| ELV status | compliant with exemption |
| China RoHS | 50 |
| REACH Annex XVII substances | Not contained |
| REACH ANNEX XIV substances | Not contained |
| REACH SVHC substances | Yes |
| REACH SVHC substances | Lead |
| California Proposition 65 substances | Yes |
| California Proposition 65 substances | Lead |



Pushing Performance
Since 1945

Specifications and approvals

| | |
|----------------|-----------------------------------------------------------------------|
| Specifications | EN 45545-2 R22: HL1, HL2, HL3 |
| | EN 45545-2 R23: HL1, HL2, HL3 |
| | EN 45545-2 R24: HL1, HL2, HL3 |
| | IEC 61373 Category 1 Class B |
| | EN 60664-1 |
| IEC 61984 | |
| Approvals | DNV GL |
| UL / CSA | UL 1977 ECBT2.E235076 |
| | CSA-C22.2 No. 182.3 ECBT8.E235076 |
| | Please contact your local HARTING subsidiary for further information. |

Commercial data

| | |
|--------------------------------|---------------------------------------------------|
| Packaging size | 1 |
| Net weight | 12.3 g |
| Country of origin | Germany |
| European customs tariff number | 85366990 |
| eCl@ss | 27440205 Contact insert for industrial connectors |