



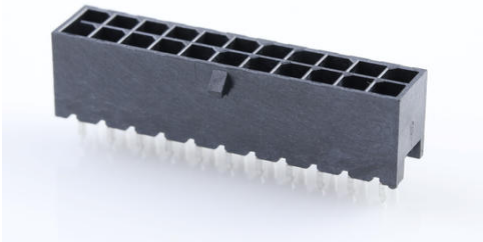
**Part Number :** [2068322201](#)

**Product Description :** Micro-Fit+ Vertical Header, Through Hole, 3.00mm Pitch, Dual Row, 22 Circuits, Tin (Sn) Plating, Glow-Wire Capable, Black, Tray

**Series Number :** 206832

**Status :** Active

**Product Category :** PCB Headers and Receptacles



## Documents & Resources

### Drawings

[2068322201\\_sd.pdf](#)

[2068320000-PK-000.pdf](#)

### 3D Models and Design Files

[STEP AP242](#)

[SOLIDWORKS](#)

[Creo](#)

[Symbol and Footprint \(Multi-Format\)](#)

### Specifications

[1722990000-AS-000.pdf](#)

[2064600001-AS-000.pdf](#)


[2064600000-PS-000.pdf](#)

[2064600000-TS-000.pdf](#)

[2064600001-TS-000.pdf](#)

## Product Environment Compliance

### Compliance

GADSL/IMDS	Not Relevant
China RoHS	 per SJ/T 11365-2006
EU ELV	Not Relevant
Low-Halogen Status	Low-Halogen per IEC 61249-2-21
REACH SVHC	Not Contained per D(2024)7663-DC

	(21 Jan 2025)
EU RoHS	Compliant per EU 2015/863

#### Compliance Statements

- EU RoHS
- REACH SVHC
- Low-Halogen

#### Industry Documents

- IPC 1752A Class C
- IPC 1752A Class D
- Molex Product Compliance Declaration
- IEC-62474
- chemSHERPA (xml)

#### Substances of Interest

- PFAS

#### EU RoHS Certificate of Compliance

#### Additional Product Compliance Information

## Part Details

### General

Status	Active
Category	PCB Headers and Receptacles
Series	206832
Description	Micro-Fit+ Vertical Header, Through Hole, 3.00mm Pitch, Dual Row, 22 Circuits, Tin (Sn) Plating, Glow-Wire Capable, Black, Tray
Application	Power, Wire-to-Board
Component Type	PCB Header
Product Name	Micro-Fit+
UPC	191130125302

### Agency

CSA	LR19980
UL	E29179

### Electrical

Current - Maximum per Contact	12.5A
Voltage - Maximum	600V AC (RMS)/DC

## Physical

Breakaway	No
Circuits (Loaded)	22
Circuits (maximum)	22
Color - Resin	Black
Durability (mating cycles max)	25
First Mate / Last Break	No
Flammability	94V-0
Glow-Wire Capable	Yes
Keying to Mating Part	None
Lock to Mating Part	Yes
Material - Metal	High Copper Alloy
Material - Plating Mating	Tin
Material - Plating Termination	Tin
Material - Resin	Liquid Crystal Polymer
Net Weight	2.686/g
Number of Rows	2
Orientation	Vertical
Packaging Type	Tray
PCB Thickness - Recommended	1.57mm
PC Tail Length	3.18mm
Pitch - Mating Interface	3.00mm
Pitch - Termination Interface	3.00mm
Polarized to Mating Part	Yes
Polarized to PCB	Yes
Shrouded	Yes
Temperature Range - Operating	-40° to +125°C
Termination Interface Style	Through Hole

---

## Mates With / Use With

### Mates with Part(s)

Description	Part Number
Micro-Fit+ Dual Row Receptacle Housings	<u>206461</u>