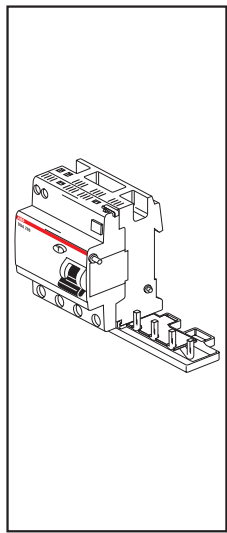


DDA 200
System pro M
compact®



2CSE423011D0007

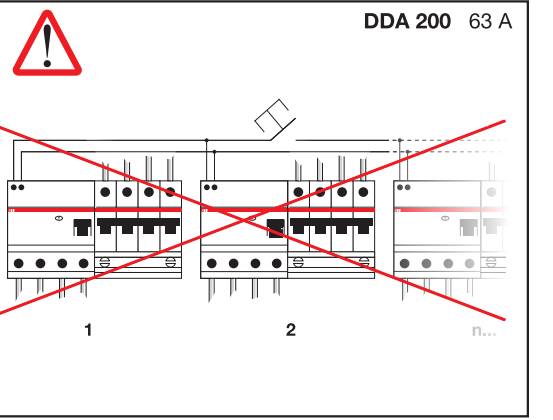
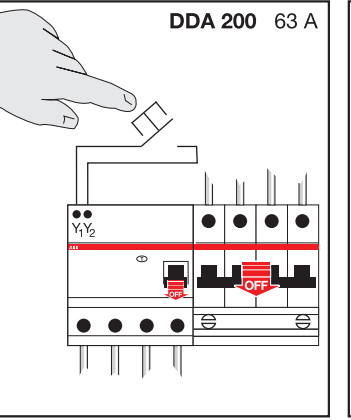
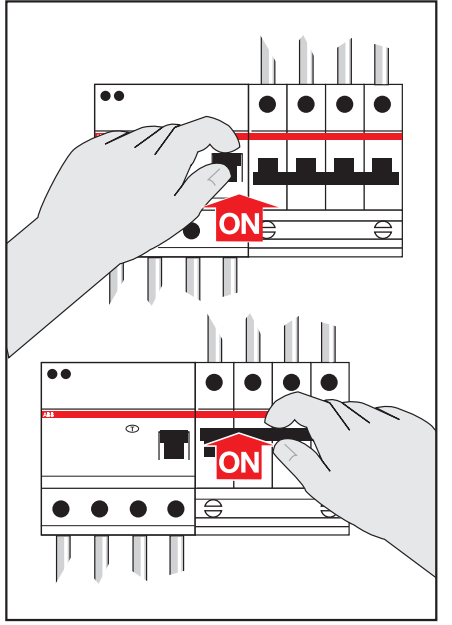
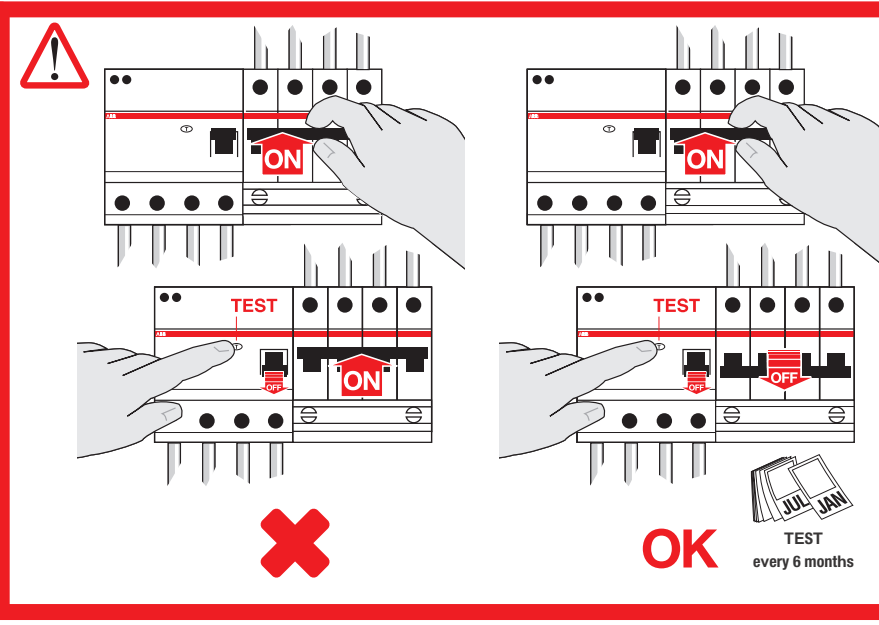
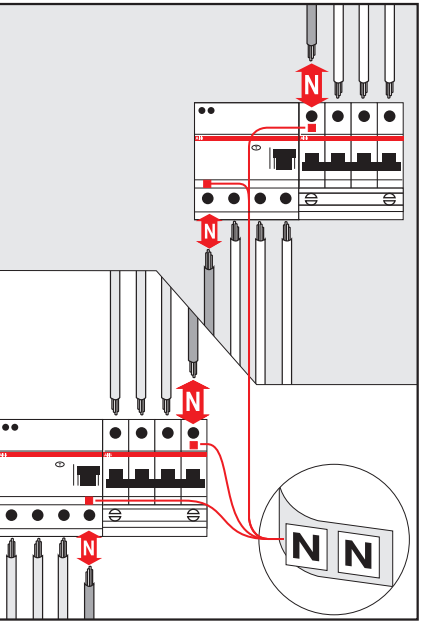
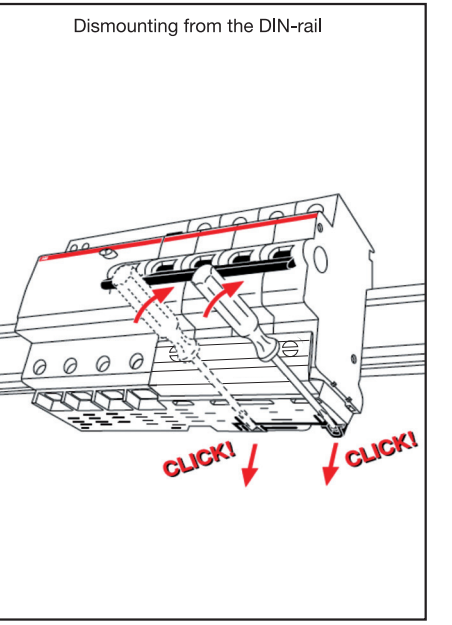
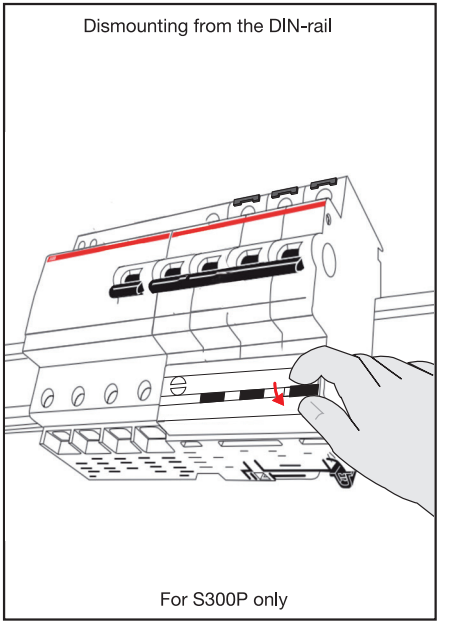
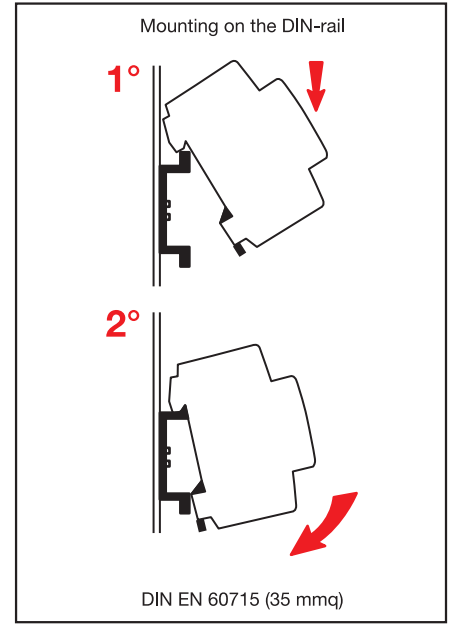
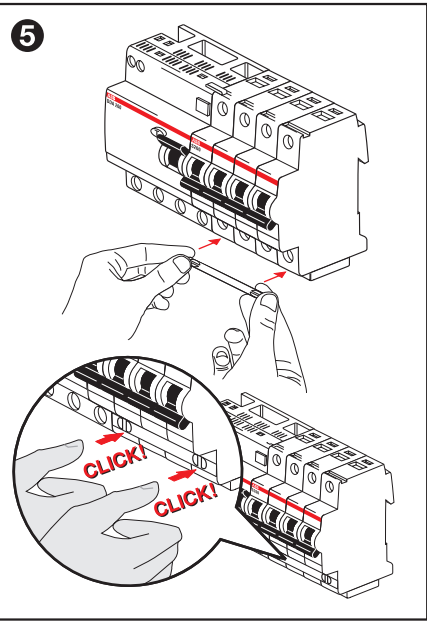
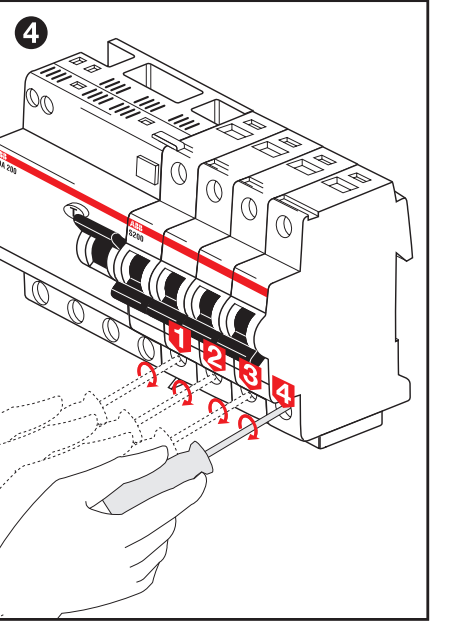
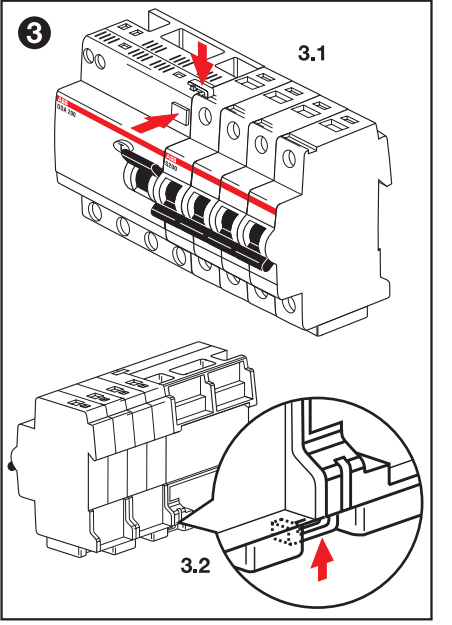
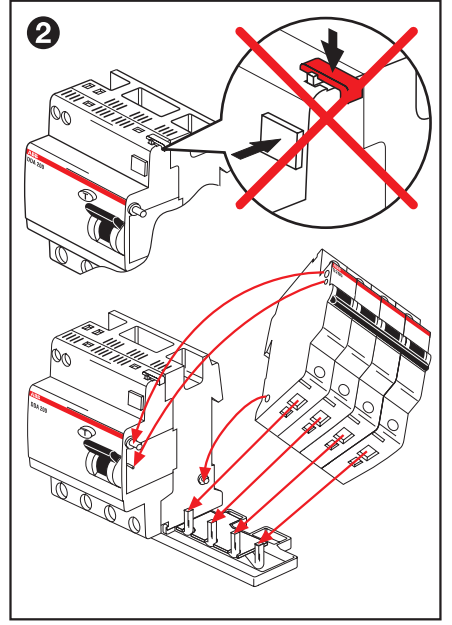
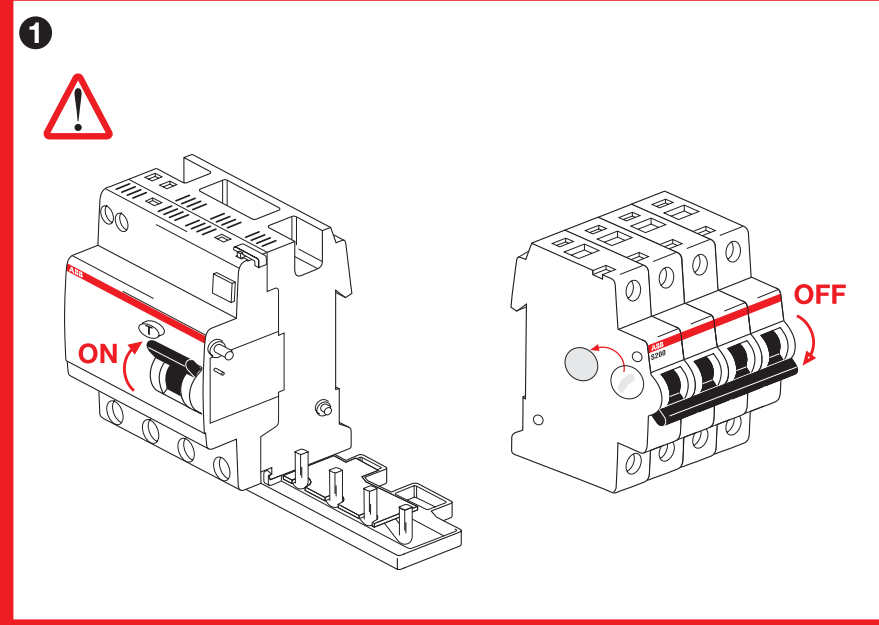
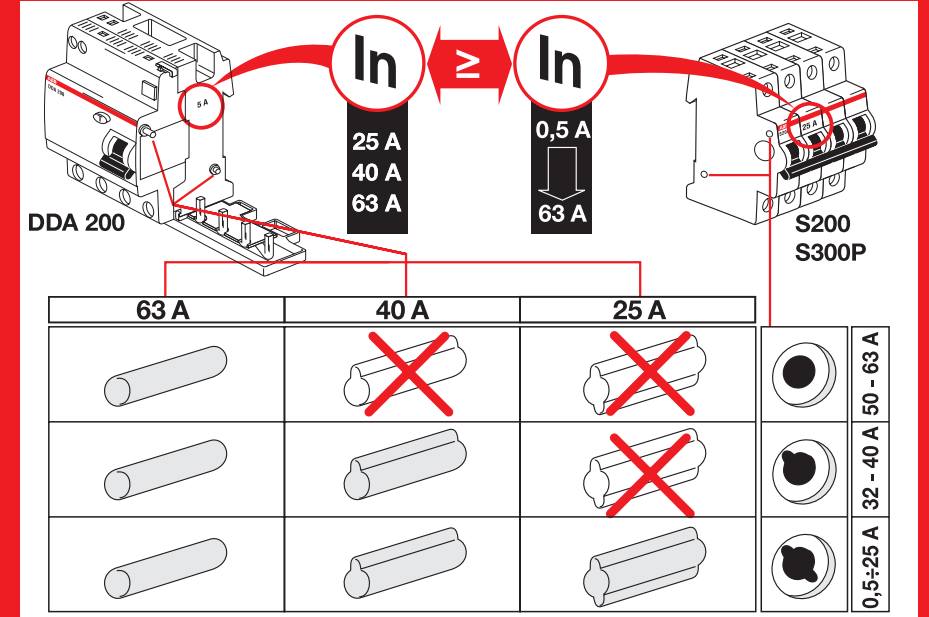
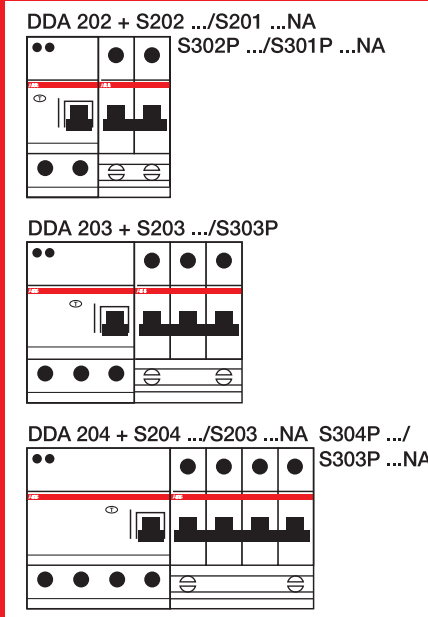
ABB S.p.A.
V.le dell'Industria 18
20009 Vittuone (MI), Italy



www.abb.com/lowvoltage

DDA200 AC
DDA200 A
DDA200 A S
DDA200 A AP-R
DDA200 A G
DDA200 F

S200 L
S200
S200 M
S200 P
S300P



	Standard terminals System pro M compact (25 mm ²)		Additional terminals for remote tripping (6 mm ²)	
2P: 25A ≤ I _n ≤ 40A	12,5 mm	2,8 Nm	Additional terminals not present	
3P/4P: 25A ≤ I _n ≤ 40A	12,5 mm	1,2 Nm	Additional terminals not present	
2P/3P/4P: I _n = 63A	12,5 mm	2,8 Nm	10,2 mm	0,8 Nm