

## FEATURES

- Set including:
  - Hand Pump
  - Pressure Gauge
  - Hose and
  - Couplings
- Ultra-Light, sturdy, and super-portable for top-level performance
- Maximum Durability thanks to specific anti-corrosion treatment, protective against the atmospheric agents
- Double stage for a very low effort on the lever and an increased efficiency
- Ultra-slim, ultra-light with weight only 3.3kg
- Lever Operated d, for industrial and professional tools, single acting cylinders, 0.5L usable oil.
- Single acting cylinder compatibility
- Made in Italy

## RS PRO Portable Hydraulic Hand Pump Set

RS Stock No.: 309331



RS Professionally Approved Products bring to you professional quality parts across all product categories. Our product range has been tested by engineers and provides a comparable quality to the leading brands without paying a premium price.

## Product Description

RS PRO Ultra-Slim Hydraulic Hand Pump double speed, lever operated, for industrial and professional tools, single acting cylinders, 0.5L usable oil. This pump comes in kit including all necessary accessories to provide you with complete solution:

- Hand Pump
- Pressure Gauge
- 2m Hose
- Coupling set

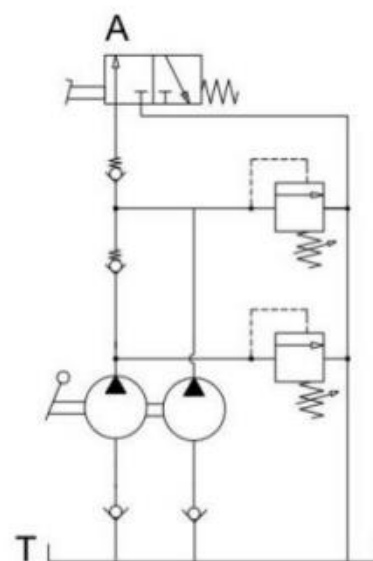
(Please scroll down for all individual specifications.)

Applications: Industrial tools, lifting systems, garages, hobby, emergency, clamping systems, small hydraulic equipment, crimper, hydraulic cutters, ultra-portable applications.

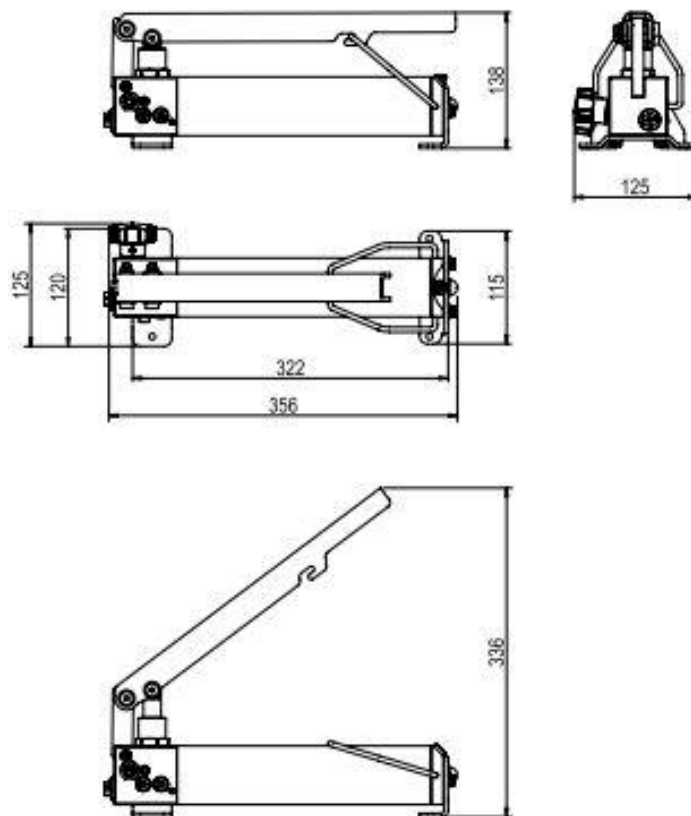
- Operated through lever.
- Ultra compact size and lightweight for maximum portability
- Double stage for a very low effort on the lever and an increased efficiency
- Significant reduction of fatigue during operations
- Steel construction for maximum strength and durability
- Single acting cylinder compatibility
- Compact and sturdy construction for heavy duty
- Ready to use: no pneumatic network required nor compressors or any other devices for operation.
- Easy to handle and transport.
- Max working pressure up to 700bar
- Very lightweight and overall dimensions
- Also available in a case kit complete with flex hose and fittings (please view our guide)

## Specifications

<b>Maximum Operating Pressure</b>	700 bar
<b>Single/Two Speed</b>	Double
<b>Usable Oil Capacity</b>	5l
<b>Oil Port</b>	3/8" NPT
<b>Cylinder Stroke</b>	18.4 mm
<b>Displacement per Stroke 1st Stage</b>	4.7 cm <sup>3</sup>
<b>Displacement per Stroke 2nd Stage</b>	0.95 cm <sup>3</sup>
<b>Max Force</b>	30 kg
<b>Dimensions</b>	356 x 125 x 138 mm
<b>Weight</b>	3.3 kg
<b>Height</b>	138 mm
<b>Width</b>	125 mm
<b>Length</b>	356 mm
<b>Outlet Type</b>	NPT 3/8"



## Drawings



## ACCESSORIES INCLUDED IN SET

### Hose - Specifications

Max. Working Pressure	1500 Bar
Min. Burst Pressure	2800 Bar
Connector A	3/8" NPT
Connector B	3/8" NPT
Overall Length	2m
Inside Diameter	6.6 mm
Outside Diameter	13.7 mm
Cover Material	Polyurethane
Inner Material	Polyester Elastomer
Reinforcing Material	Aramid fiber braids plus a steel braid
Weight	0.7kg
Minimum Bending Radius	38



**Couplings - Specifications**

Thread	NPT 3/8
Material	Steel
Max. Operating Pressure:	700 Bar
Seal Material:	NBR

**Pressure Gauge - Specifications**

Minimum Pressure Measurement	0 Bar
Maximum Pressure Measurement	1000 Bar
Mounting Type	Bottom
Connection Size	1/4" G
Gauge Outside Diameter	63mm
Display Type	Analogue
Pressure Range	0-1000 Bar
Calibrated	No
Case Material	Stainless steel
Minimum Operating Temperature	-20°C
Maximum Operating Temperature	+60°C

