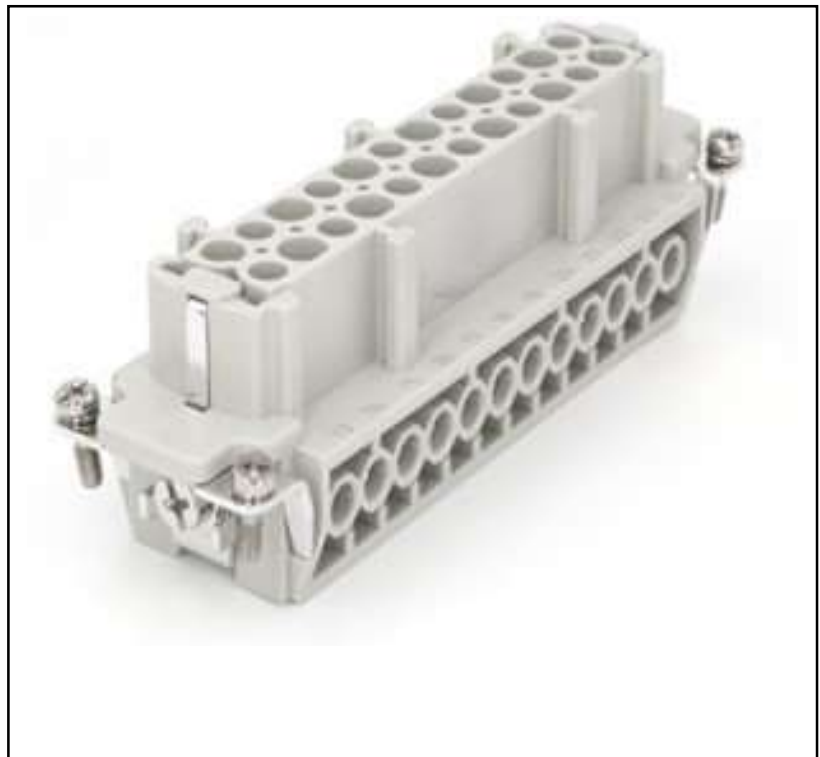


Features

- Female Insert
- Screw Termination
- 24 Pin

RS PRO Heavy Duty Connector Inserts & Modules

RS Stock No.: 0192616



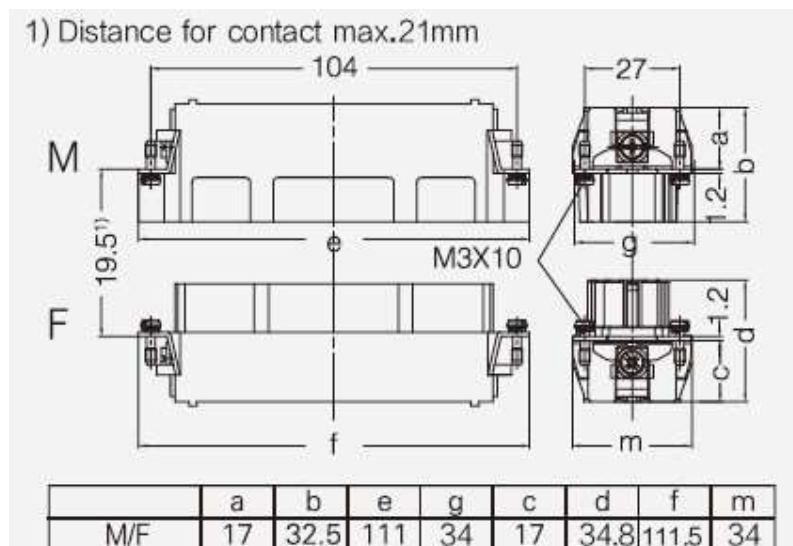
RS Professionally Approved Products bring to you professional quality parts across all product categories. Our product range has been tested by engineers and provides a comparable quality to the leading brands without paying a premium price.

Product Description

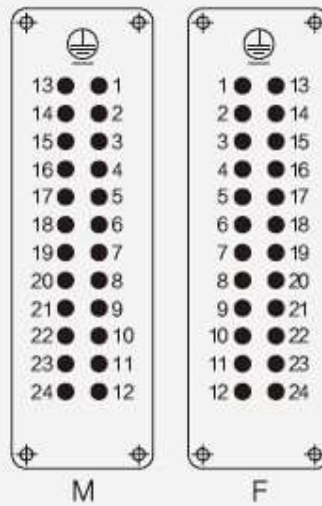
The RS Pro Heavy-Duty Connector series is a full range of heavy-duty inserts, housings, crimps and accessories. The inserts are all made of Polycarbonate and are available in a choice of screw, crimp or clam terminations in a large variety of current ratings. These connectors have been created for applications that are subjected to harsh environments or where they may be exposed to high vibration. This makes them ideal for food & beverage manufacturing.

General Specifications

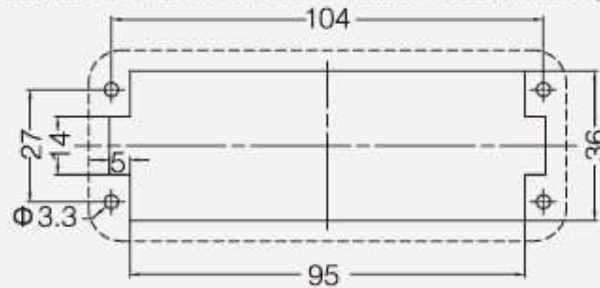
Material	Polycarbonate
Type	Female
Wire	25-48mm
Termination	Screw
Pins	16
Current	16A
Voltage	500V
Colour	Grey
Application	For use with RS Pro range of Hoods & Housings



Contacts arrangement view from termination side



Panel cut out for inserts for use without Hoods/housings



Connection Diagrams / Assembly Diagrams / Illustrations / Accessories