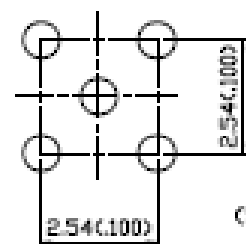
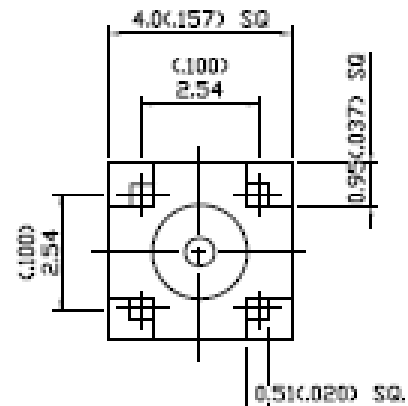
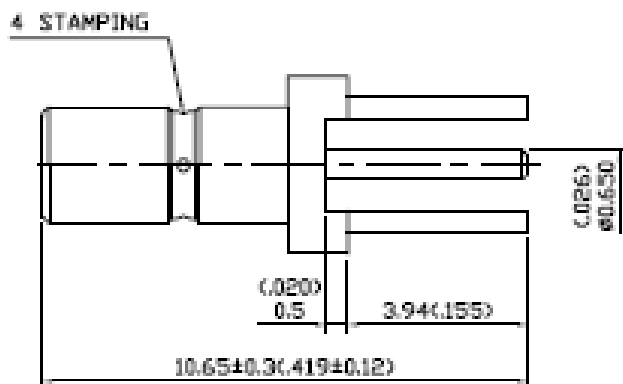


NO	DESCRIPTION	DATE
△	ADD REHARK	10.05.07'



MOUNTING HOLE

1.0 ELECTRICAL

- 1.1 FREQUENCY RANGE: DC-4 GHz
- 1.2 NOMINAL IMPEDANCE: 50 OHMS
- 1.3 WORKING VOLTAGE: 250 VOLTS MAX.
- 1.4 PROOF VOLTAGE: 600 VOLTS
- 1.5 VSWR: 1.3 MAX.

2.0 MATERIALS

- 2.1 BODIES: BRASS PER JIS-C3604
- 2.2 CENTER CONTACT: BRASS PER JIS-C3604
- 2.3 INSULATION: TEFLON PER ASTM D1457 AND ASTM D5170

3.0 FINISHES AND OTHERS

- 3.1 SEE BELOW TABLE FOR DETAILS.

4.0 MECHANICAL

- 4.1 INTERFACE IN ACCORDANCE WITH: MIL-STD-348A

5.0 ENVIRONMENTAL

- 5.1 OPERATING TEMPERATURE RANGE: -55° C TO +105° C

3	CENTER CONTACT	BRASS	1	GOLD 30μ" MIN.
2	INSULATION	TEFLON	1	NONE
1	BODY	BRASS	1	GOLD 3μ" MIN.
NO	DESCRIPTION	MATERIAL	Q'TY	FINISH



APPROVED

by

DATE

DESCRIPTION		SSMB STRAIGHT PCB MOUNT JACK RECEPTACLE							
製圖	DRAWN	TOLERANCE	品名	46-14	T.G.G	日期	DATE	版次	REV.
檢圖	Yoko	.X ±0.2	TITLE	\RDHS COMPLIANT (500)		04.18.07'			A-1
檢圖	CHECK	.XX ±0.1	單位	mm(in)	DWG.NO.	46-0014			
檢圖	Arc	.XXX ±0.05	比例	B:1					
規定	APPROVAL	ANGLE	Lewis						