

- CHARACTERISTIC IMPEDANCE: 100±10 OHMS (MEASURED DIFFERENTIALLY)
- LABEL INFORMATION:

	TE P/N
2053453-[]	TE P/N
QSFP to SFP+	YYWW= DATECODE, SSSS= SERIAL NUMBER
YYWWSSSS	BARCODE FOR DATECODE/SERIAL NUMBER
- LABEL INFORMATION:

	TE LOGO
2053453-[]	TE P/N
YYWWSSSS	YYWW= DATECODE, SSSS= SERIAL NUMBER
	BARCODE FOR DATECODE/SERIAL NUMBER
MADE IN _____	COUNTRY OF ORIGIN
- LABEL INFORMATION:

P[]	APPROPRIATE "P" NUMBER
SFP+	
- CABLE ASSEMBLY TO BE TESTED FOR CONTINUITY, OPENS, SHORTS AND PROPER EEPROM PROGRAM.
- SEE SHEET 2 FOR WIRING DIAGRAM.
- PRODUCT AND PROCESSING MEETS THE REQUIREMENTS OF TE STANDARD TEC-138-702.
- SERIAL NUMBER BEGINS WITH 0001 AT THE BEGINNING OF EACH WEEK.
- SEE TABLE FOR HEAT SHRINK TUBE LENGTH.

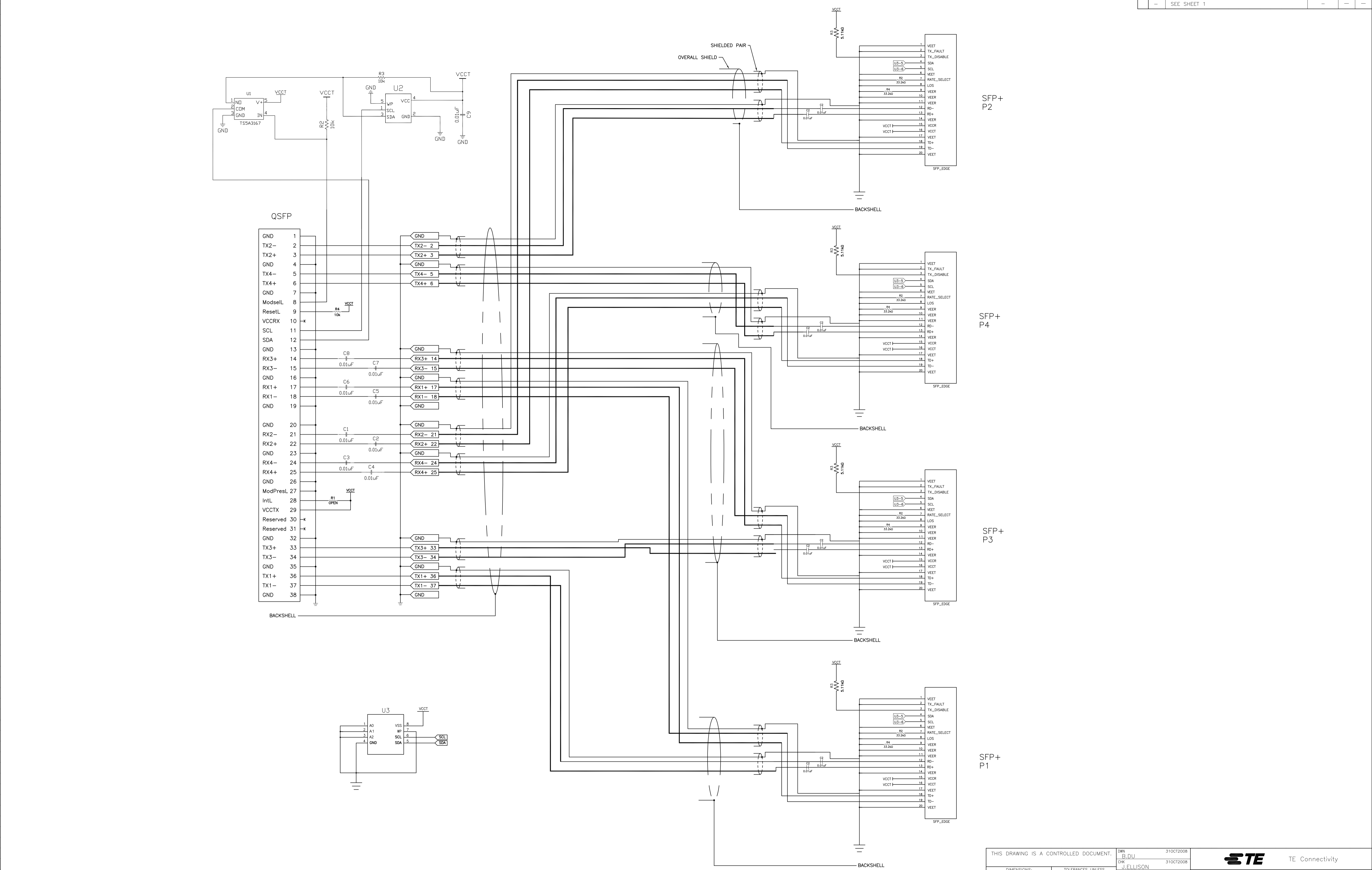
35	26 AWG	1000±25	5000 ⁺⁸⁰ ₀	2053453-6
50	28 AWG	1000±25	4000 ⁺⁸⁰ ₀	2053453-5
50	30 AWG	1000±25	3000 ⁺⁸⁰ ₀	2053453-4
50	30 AWG	1000±25	2000 ⁺⁸⁰ ₀	2053453-3
50	30 AWG	500±25	1000 ⁺⁵⁰ ₀	2053453-2
50	30 AWG	250±25	500 ⁺⁵⁰ ₀	2053453-1
"X"	CABLE GAGE	L2	L1	PART NO

THIS DRAWING IS A CONTROLLED DOCUMENT.

DIMENSIONS: mm	TOLERANCES UNLESS OTHERWISE SPECIFIED:	APVD: J. ELLISON	DATE: 31OCT2008
0. PLC ± -	1. PLC ± -	NAME: J. ELLISON	DATE: 31OCT2008
2. PLC ± -	3. PLC ± -	PRODUCT SPEC: -	
4. PLC ± -	ANGLES ± -	APPLICATION SPEC: -	
MATERIAL: -	FINISH: -	WEIGHT: -	RESTRICTED TO: -
CUSTOMER DRAWING		SIZE: A1	SCALE: 1:1
		CAGE CODE: 00779	DRAWING NO: 2053453
		SHEET: 1 OF 2	REV: D

STE TE Connectivity

CABLE ASSEMBLY, QSFP TO [4] SFP+



SFP+ P2

SFP+ P4

SFP+ P3

SFP+ P1

THIS DRAWING IS A CONTROLLED DOCUMENT.		DWN	DU	31OCT2008	 TE Connectivity
DIMENSIONS: mm		CHK	J. ELLISON	31OCT2008	
		TOLERANCES UNLESS OTHERWISE SPECIFIED:		PRODUCT SPEC APPLICATION SPEC FINISHES	
MATERIAL		WEIGHT		SIZE: A1 CAGE CODE: 00779 DRAWING NO: C=2053453	
		CUSTOMER DRAWING		SCALE: 1:1 SHEET: 2 OF 2 REV: D	