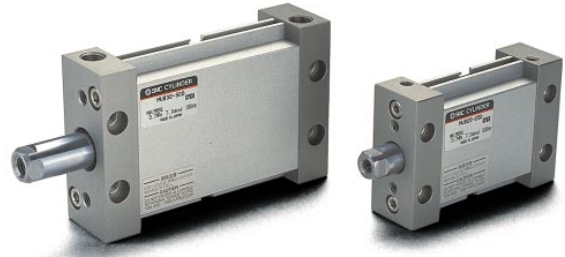


## PLATE CYLINDER SERIES MU BORE SIZES Ø25-63MM

- ✓ A special elliptical piston design saves installation space
- ✓ Can be mounted directly from all faces (except port face)
- ✓ Built in magnet for auto switch sensing
- ✓ Non rotating
- ✓ Single Acting and Through Rod types also available

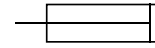


NOTE: The above photograph shows the female rod end type. Dimensional drawings on the next page show the male rod end type.

### TECHNICAL SPECIFICATIONS

Fluid	Air				
Proof pressure	10.7 Bar				
Max. operating pressure	7.1 Bar				
Min. operating pressure	0.51 Bar				
Ambient and fluid temperature	-10 - 60°C				
Lubrication	Not required (Non-lube)				
Piston speed	50 - 500 mm/s				
Stroke tolerance	+1.4/0				
Cushion	Rubber cushion (standard)				
Thread tolerance	JIS 2 class				
Bore size	Ø25	Ø32	Ø40	Ø50	Ø63
Non-rotating accuracy	±1°	±0.8°	±0.5°	±0.5°	±0.5°

**SYMBOL**  
Double acting, single rod



### ACCESSORIES PLATE CYLINDERS

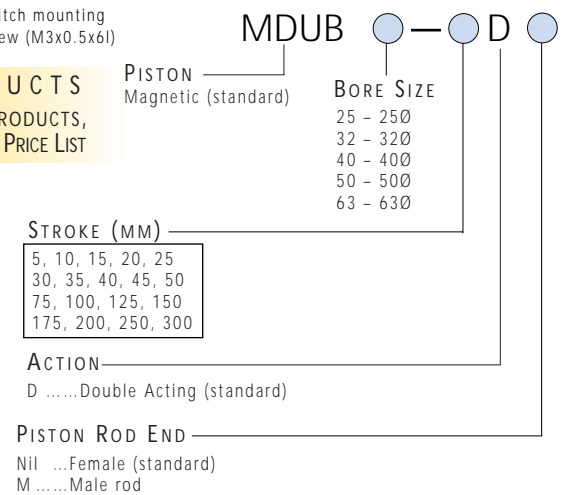
Mounting Accessories	Bore size				
	Ø25	Ø32	Ø40	Ø50	Ø63
Axial Direction Foot	MU-L02	MU-L03	MU-L04	MU-L05	MU-L06
Flange	MU-F02	MU-F03	MU-F04	MU-F05	MU-F06
Single Rear Clevis	MU-C02	MU-C03	MU-C04	MU-C05	MU-C06
Double Rear Clevis	MU-D02	MU-D03	MU-D04	MU-D05	MU-D06
Single Rod Clevis	I-MU02	I-MU03	I-MU04	I-MU05	I-MU05
Double Rod Clevis	Y-MU02	Y-MU03	Y-MU04	Y-MU05	Y-MU05

### ACCESSORIES

BMU1-025 .....Switch mounting screw (M3x0.5x6l)

**STOCKED PRODUCTS**  
FOR A LIST OF STOCKED PRODUCTS, PLEASE SEE THE CURRENT SMC PRICE LIST

### How To ORDER MU PLATE CYLINDER



**STOCKED PRODUCTS**  
FOR A LIST OF STOCKED PRODUCTS, PLEASE SEE THE CURRENT SMC PRICE LIST

### ACCESSORIES AUTOSWITCHES

MODEL		Switch mount: BMU1-025					
Part no	Part no	TYPE	LOAD VOLTAGE	LOAD CURRENT	POWER SOURCE	INTERNAL VOLTAGE DROP	INDICATOR LAMP
Grommet Type	Connector Type						
D-A73L	D-A73CL	REED	24VDC 100VAC	5-40mA 5-20mA		MAX 2.4V	ON:RED LED
D-A80L	D-A80CL	REED	24VDC/AC OR LESS 100VDC/AC	MAX 50mA MAX 20mA		0	NONE
D-F79L-Q	-	3 WIRE SOLID STATE NPN	28VDC OR LESS	MAX 150mA	5-28VDC	0.8V MAX	ON:RED LED
D-F7PL-Q	-	3 WIRE SOLID STATE PNP	28VDC OR LESS	MAX 100mA	5-28VDC	0.8V MAX	ON:RED LED
D-J79L-Q	D-J79CL-Q	2 WIRE SOLID STATE	28VDC OR LESS	5- 150mA	-	3V MAX	ON:RED LED

DIMENSIONS  
SEE NEXT PAGE

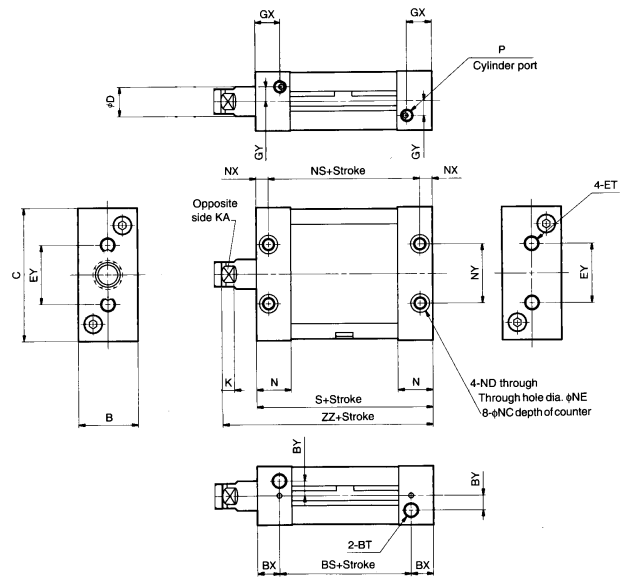


SEE INSIDE FRONT COVER FOR  
DETAILS OF YOUR LOCAL SALES OFFICE

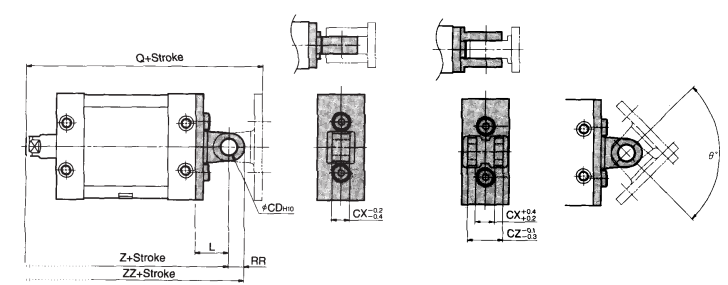


FOR FURTHER TECHNICAL  
DETAILS ON THIS  
PRODUCT CONTACT  
YOUR LOCAL REGIONAL  
CENTRE

### DIMENSIONS MDUB BASIC CYLINDER WITH MALE THREAD



### DIMENSIONS SINGLE CLEVIS



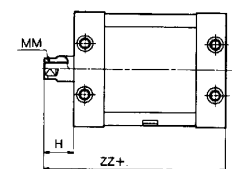
### DIMENSIONS DOUBLE CLEVIS

Bore Size	CD <sub>H10</sub>	CX	CZ	L	Q	RR	Z	ZZ	Pivot Range (θ°)
MDU•25	8 <sup>+0.058</sup> <sub>0</sub>	9	18	17	125	8	108	116	100
MDU•32	10 <sup>+0.058</sup> <sub>0</sub>	11	22	22	142	10	120	130	90
MDU•40	10 <sup>+0.058</sup> <sub>0</sub>	13	26	27	159	10	132	142	80
MDU•50	14 <sup>+0.070</sup> <sub>0</sub>	16	32	32	191	14	159	173	80
MDU•63	14 <sup>+0.070</sup> <sub>0</sub>	16	32	38	207	16	169	185	80

Model	Stroke Range (mm)	A	AL	B	B1	BS	BT	BX	BY	C	D	ET	EY	GX	GY	H	K
MDUB25	5-300	22	19.5	24	17	37	M5 x 0.8 depth 7.5	9	7	54	12	M5 x 0.8 depth 11	26	10	5	36	5.5
MDUB32	5-300	26	23.5	28	19	45	M6 x 1 depth 12	6.5	8	68	14	M6 x 1 depth 11	42	8.5	5.5	40	5.5
MDUB40	5-300	30	27	32	19	44	M8 x 1.25 depth 13	8	9	86	16	M8 x 1.25 depth 11	54	9	7	45	6
MDUB50	5-300	35	32	39	24	54	M10 x 1.5 depth 14.5	10	9	104	20	M10 x 1.5 depth 15	64	11.5	8	53	7
MDUB63	5-300	35	32	50	24	53	M12 x 1.75 depth 18	11	12	124	20	M12 x 1.75 depth 15	72	11.5	10	56	7

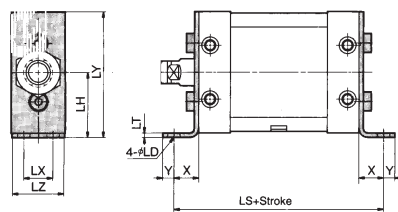
Model	KA	M	N	NC	ND	NE	NS	NX	NY	P	S	ZZ
MDUB25	10	M10x1.25	14	7.5 depth 4.5	M5 x 0.8	4.3	43	6	26	M5 x 0.8	55	91
MDUB32	12	M12x1.25	15.5	9 depth 5.5	M6 x 1	5.1	45	6.5	28	Rc(PT) 1/8	58	98
MDUB40	14	M14x1.5	16	10.5 depth 6.5	M8 x 1.25	6.9	44	8	36	Rc(PT) 1/8	60	105
MDUB50	18	M18x1.5	21.5	13.5 depth 8.5	M10 x 1.5	8.7	54	10	42	Rc(P/T) 1/4	74	127
MDUB63	18	M18x1.5	21.5	17 depth 10.5	M12 x 1.75	10.5	53	11	46	Rc(P/T) 1/4	75	131

### DIMENSIONS THREAD DIMENSIONS FEMALE ROD

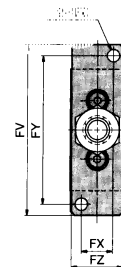


Bore Ø	H	MM	ZZ
MUB25	14	M6x1x12	69
MUB32	14	M8x1.25x13	72
MUB40	15	M8x1.25x13	75
MUB50	18	M10x1.5x15	92
MUB63	21	M10x1.5x15	96

### DIMENSIONS AXIAL DIRECTION FOOT TYPE

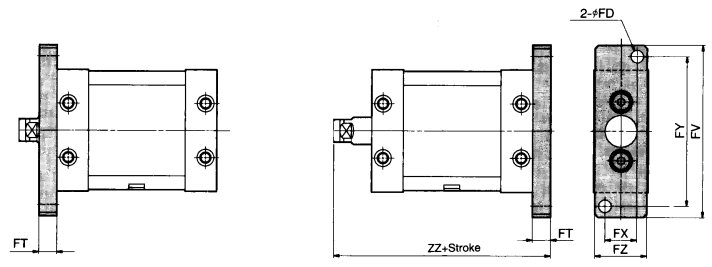


### DIMENSIONS ROD SIDE FLANGE TYPE



Bore Size	LD	LH	LS	LT	LX	LY	LZ	X	Y	ZZ
MDU•25	5.5	29	79	3.2	11	56	23	12	6	109
MDU•32	6.6	37	90	4.5	12	71	27	16	8	122
MDU•40	9	46	96	4.5	15	89	31	18	10	133
MDU•50	11	57	116	5	18	109	37	21	11	159
MDU•63	13.5	67	123	6	22	129	48	24	14	169

### DIMENSIONS HEAD SIDE FLANGE TYPE



Bore Size	FD	FT	FV	FX	FY	FZ	ZZ
MDU•25	5.5	8	76	14	66	24	99
MDU•32	7	8	94	16	82	28	106
MDU•40	9	9	118	18	102	32	114
MDU•50	11	12	144	22	126	39	139
MDU•63	13	14	168	30	148	50	145



FOR FURTHER TECHNICAL  
DETAILS ON THIS PRODUCT  
CONTACT YOUR LOCAL  
REGIONAL CENTRE