

Description

CONDUCTIVE CASTOR WITH TOP PLATE, GREY POLYURETHANE RUBBER 160MM

Part Number

Fixed

Swivel

Swivel and brake

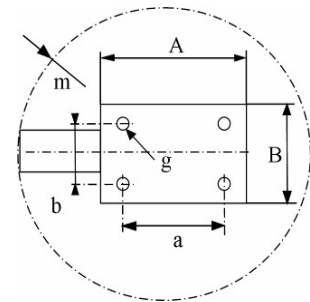
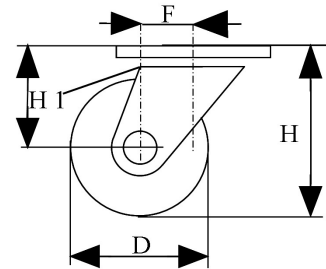
EF5BA160-271B-PF

EP5BA160-271B-PF

EP5BD160-271B-PF



	Fixed	Swivel	Swivel+brake
Wheel Diameter ØD	160 mm		
Overall Height H	199 mm		
Size of plate A X B	135 x 110 mm±1		
Plate hole centres a x b	105 x 80 mm±0,3		
Plate hole	11 mm		
Offset F ±1	\	55 mm	55 mm
Width of Tread	46 mm±0,5		
Hardness of tread	shore A ± 90		
Load capacity	300 Kg		
Weight	1,6 kg	2,0 kg	2,4 kg
Temperature	- 20 / + 70 °C		



Castor Assembly :

Pressed steel, zinc-plated components. Swivel on two rows of balls.
Fastening by top plate.
Total lock. Metal pedal.

Wheel :

Wheel centre made of Grey electroconductive Polyamide 6.
Tread : Dark grey Polyurethane made from electroconductive materials.
Hub : Double sealed ball bearings. Polyamide Threadguards.

Features :

Low starting effort,
Bonded Rubber, non marking.
Good resistance to abrasion and chemical aggression.
Protects sensitive goods and users from electric shocks (electrostatic discharges).
Conductive castors compliant with ISO 22877.
Electrical resistance < 100000 ohms.
For use on trolleys or sensitive devices in laboratories, medical units, hospitals, electrical and electronic factories, explosion hazard areas....