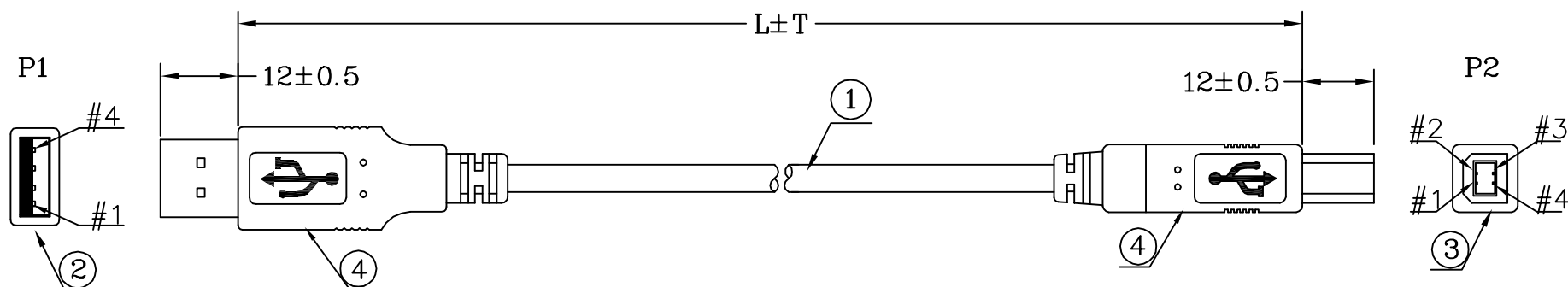


FILE NO:

DESCRIPTION CONTROL

REV	DESC	DATE	ECN NO
B		2012/6/1	N21206014



CUSTOMER P/N		L±T	M	PE BAG:L"W"*0.06MM	TIE	Q'TY
7587472		1000±30	1.0	PE BAG:5"*6"*0.06MM	100*1	A/R
7587481		3000±50	3.0	PE BAG:6"*8"*0.06MM	120*1	A/R



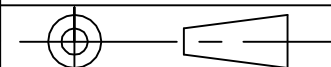
RoHS COMPLIANT



PIN ASSIGNMENT

P1		P2
1	RED	1
2	WHITE	2
3	GREEN	3
4	BLACK	4
S	BRAID+DRAIN	S

*		LABEL:45*25MM*	1	PCS	INNER MOLDING				
*	220030000361	TIE-A/BE02	***	MM	OUTER MOLDING	USB A-01	USB.B-02		
*	310000000011	CARTON:46*30*20CM	A/R	PCS					
*	300010000001	PE BAG:30"*28"*0.08MM	A/R	PCS					
*		PE-BAG:L"W"*0.06MM	1	PCS					
4	120010000006	PVC-BE02/50P	13.6	G					
3	181-041013-C	USB-B-P<WH>	1	SET					
2	180-041013-C	USB-A-P<WH>/L	1	SET					
1	1303045022663	UL2725,(1P+2C)+ADB,BE02,OD:4.8(28/24) <REV2.0>	L	M					
NO	PART NO	DESCRIPTION	QTY	UNIT					



ITEM: 7587472&7587481

REV
B

DRAWN,BY: 向三茶

SCALE:NONE

DATE:2011.08.16

CHECKED,BY:

CUSTOMER:C331 RS

PAGE:1/1

APP'ED,BY:

CUSTOMER P/N:75874XX

ALL DIMENSIONS IN mm (UNLESS OTHERWISE SPECIFIED)