

Main

Product or component type	Common mode output filter
Range compatibility	Altivar Process ATV600 Altivar Process ATV900
Value of inductance	180 µH
Product compatibility	Variable speed drive ATV630 wall mount, 15...90 kW, 380...480 V Variable speed drive ATV650 wall mount, 15...90 kW, 380...480 V Variable speed drive ATV930 wall mount, 15...90 kW, 380...480 V Variable speed drive ATV950 wall mount, 15...90 kW, 380...480 V Variable speed drive ATV630 wall mount, 7.5...45 kW, 200...240 V Variable speed drive ATV930 wall mount, 7.5...45 kW, 200...240 V





Complementary

Maximum motor cable length	150 M(Shielded cable) motor: 30...90 kW 380...480 V, with 1 filter 300 M(Unshielded cable) motor: 15...90 kW 380...480 V, with 1 filter 300 M(Shielded cable) motor: 30...90 kW 380...480 V, with 1 filter + VW3A5503 500 M(Unshielded cable) motor: 30...90 kW 380...480 V, with 1 filter + VW3A5503 500 M(Shielded cable) motor: 15...22 kW 380...480 V, with 1 filter + VW3A5503 500 M(Shielded cable) motor: 30...90 kW 380...480 V, with 2 filter 1000 M(Unshielded cable) motor: 15...22 kW 380...480 V, with 1 filter + VW3A5503 1000 M(Unshielded cable) motor: 30...90 kW 380...480 V, with 2 filter 150 M(Shielded cable) motor: 15...45 kW 200...240 V, with 1 filter 300 M(Unshielded cable) motor: 7.5...45 kW 200...240 V, with 1 filter 300 M(Shielded cable) motor: 15...45 kW 200...240 V, with 1 filter + VW3A5503 500 M(Unshielded cable) motor: 15...45 kW 200...240 V, with 1 filter + VW3A5503 500 M(Shielded cable) motor: 7.5...11 kW 200...240 V, with 1 filter + VW3A5503 500 M(Shielded cable) motor: 15...45 kW 200...240 V, with 2 filter 1000 M(Unshielded cable) motor: 7.5...11 kW 200...240 V, with 1 filter + VW3A5503 1000 m(unshielded cable) motor: 15...45 kW 200...240 V, with 2 filter
Saturation current	2.2 A
Internal diameter	76 Mm for 3-phase cable inside 76 mm for PE cable outside
Electrical insulation class	Class I
Mechanical robustness	Shocks class 3M4 conforming to IEC 60721-3-3 Vibrations class 3M4 conforming to IEC 60721-3-3
Switching frequency	<= 10 kHz
Maximum output frequency	100 Hz
Height	210 mm
Width	127.5 mm
Depth	127.5 mm
Net weight	2.96 kg

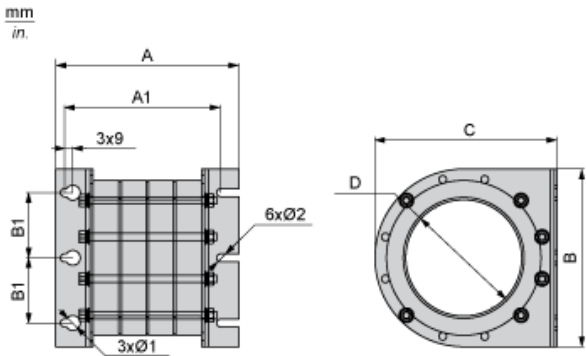
Environment

Relative humidity	5...95 % without condensation
Ambient air temperature for operation	-15...60 °C
Ambient air temperature for storage	-40...70 °C

Offer Sustainability

REACH Regulation	 REACH Declaration
REACH free of SVHC	Yes
EU RoHS Directive	Pro-active compliance (Product out of EU RoHS legal scope)  EU RoHS Declaration
Toxic heavy metal free	Yes
Mercury free	Yes
RoHS exemption information	 Yes
China RoHS Regulation	 China RoHS Declaration

Dimensions



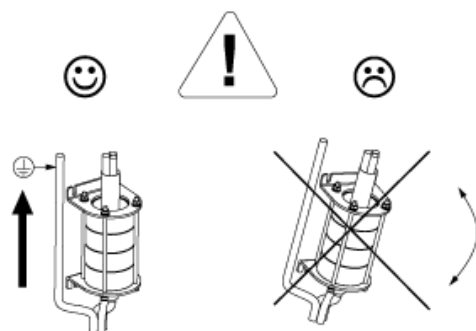
Dimensions in mm

A	A1	B1	Ø1	Ø2	B	C	D
210	187	45	13	6.5	127.5	127.5	75

Dimensions in in.

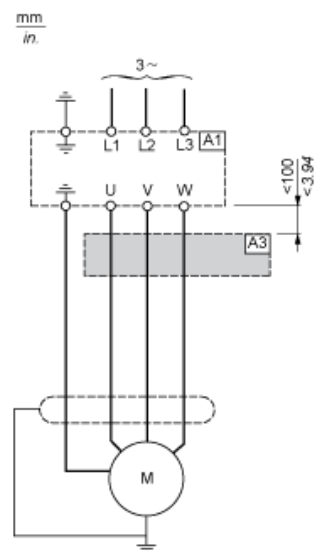
A	A1	B1	Ø1	Ø2	B	C	D
8.3	7.1	1.8	0.5	0.26	5.0	5.0	3.0

Mounting Recommendations



Recommended Schema

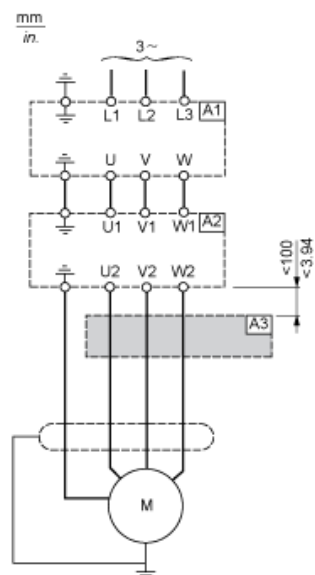
Connection at the Output Terminals of the Drive



A1 : Drive

A3 : Common mode filter

Connection at the Output Terminals of the dv/dt Filter or Sinus Filter



A1 : Drive

A2 : dv/dt or sinus filter

A3 : Common mode filter