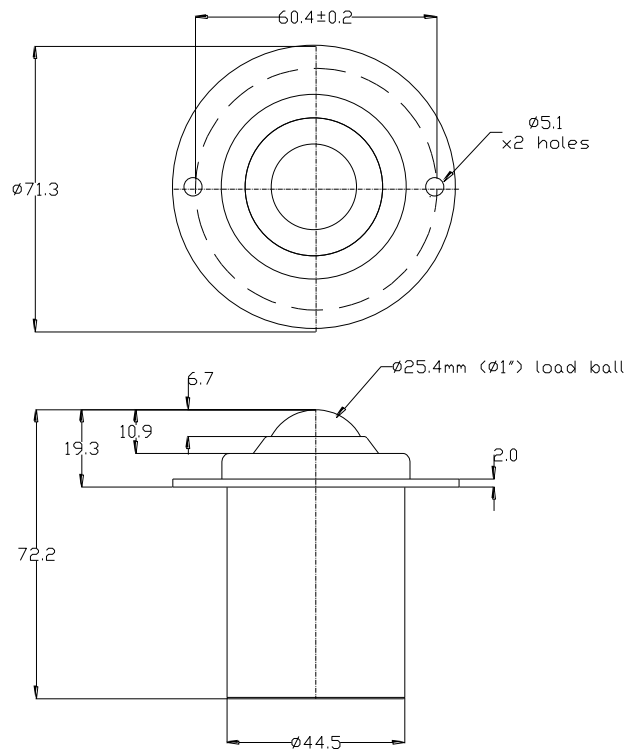


15071300 DATASHEET



PART No.	BALL SIZE (mm)	WEIGHT (kgs)	MAXIMUM DIAMETER (mm)	WORKING HEIGHT OF BALL (mm)	BALL EXPOSURE ABOVE OUTER RING (mm)	FLANGE THICKNESS (mm)	HOLE SIZE (mm)	HOLE CENTRES PCD (mm)
15071300	$\varnothing 25.4$	0.4	$\varnothing 71.3$	19.3	6.7	2.0	$\varnothing 5.1$	60.4 ± 0.2

MAXIMUM DYNAMIC LOADING

Type 13 with carbon steel bearings with 50kgs support load and 130kgs final load

MATERIALS

Housing - Carbon steel with zinc plated finish

Balls – Carbon steel with hardness of 60HRC self colour finish

Spring – Carbon spring steel with self colour finish

Back plate – Carbon steel with zinc plated finish

Circlip – Carbon spring steel with phosphate finish

Seal - Polyurethane

KEY FEATURES

Low profile

Plastic scraper seal to help keep out dirt and debris

2 hole fixing in flange for securing unit from top

Spring loaded with load ball fully depressing under load

Maximum temperature 100°C