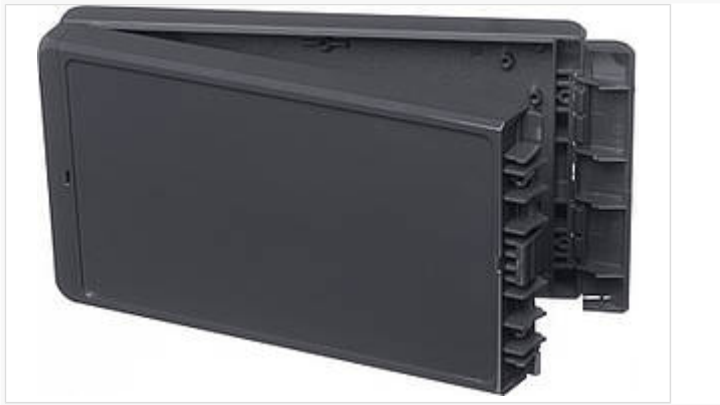


Bocube

Enclosures, polycarbonate UL 94 V0, single-coloured



B 221304 PC-V0 7024

Order no.: 96015244

* = Available on request.

Characteristics

Colour of enclosure group

Graphite grey, similar to RAL 7024

Colour of enclosure group

Graphite grey

Protection class

IP 66, 68 - 1,2m (2 hours)

Enclosure Material

ABS or PC UL 94 V0 (material is suitable for outdoor use; f1-listing according to UL 746C)

PU seal, foamed; for details please see Technical Information

Scope of delivery

Lid and base, hinged quick-release catches

Important!

To compensate for pressure when temperatures change and cause moisture in the enclosure, we recommend that you use a pressure compensation element.

» Additional information

Technical documentation / Downloads

Technical drawings

3D product data in STEP format: Registration necessary
Product drawing in PDF format: 96015244 B-221304-PC-V0-7024.pdf (229.8 KB)

Product information

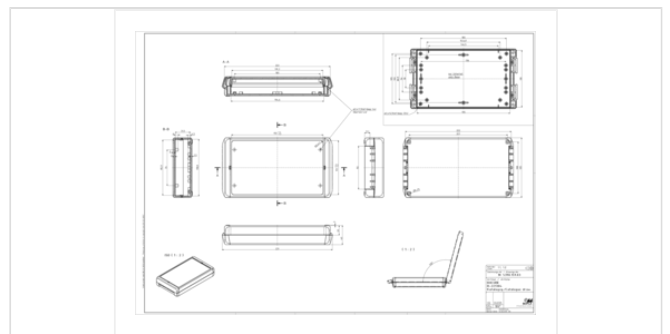
Bocube GB.pdf (1.9 MB)
Highlights Bocube.pdf (3.8 MB)

Dimensions

Dimensions

231 x 125 x 40 mm

Product drawing



Product drawing in DXF format: 96015244 B-221304-PC-V0-7024.dxf (3.8 MB)

Drawing for mechanical processing: 96015244 B-221304-PC-V0-7024-G.dxf (3.0 MB)

Milling contours are shown here as a DXF file. (Sub D, USB, HDMI, cable glands, ...)

Works Test Certificates

688 WPZ-Bocube-PC-V0 DE.pdf (184.6 KB)

689 WPZ-Bocube-ABS DE.pdf (165.1 KB)

689 WPZ-Bocube-ABS EN.pdf (160.3 KB)

688 WPZ-Bocube-PC-V0 EN.pdf (179.1 KB)

Matching accessories



Hinged quick-release catches (Set), polycarbonate UL 94 V0 or ABS

96310200	B SC 13 PC-V0 3000	For B 1413.., B 1813.., B 2213..	Flame red
96310202	B SC 13 PC-V0 5002	For B 1413.., B 1813.., B 2213..	Ultramarine blue
96310209	B SC 13 PC-V0 6029	For B 1413.., B 1813.., B 2213..	Mint green
96310204	B SC 13 PC-V0 7024	For B 1413.., B 1813.., B 2213..	Graphite grey
96310205	B SC 13 PC-V0 7035	For B 1413.., B 1813.., B 2213..	Light grey
96310203	B SC 13 PC-V0 1023	For B 1413.., B 1813.., B 2213..	Traffic yellow



Hand-operated hinged catch (set), polycarbonate UL 94 V0 or ABS

96910200	B SC HB 13 PC-V0 3000	For B 1413.., B 1813.., B 2213..	Flame red
96910202	B SC HB 13 PC-V0 5002	For B 1413.., B 1813.., B 2213..	Ultramarine blue
96910209	B SC HB 13 PC-V0 6029	For B 1413.., B 1813.., B 2213..	Mint green
96910204*	B SC HB 13 PC-V0 7024	For B 1413.., B 1813.., B 2213..	Graphite grey
*			
96930205*	B SC HB 13 ABS 7035	For B 1413.., B 1813.., B 2213..	Light grey
*			
96910205*	B SC HB 13 PC-V0 7035	For B 1413.., B 1813.., B 2213..	Light grey
*			
96910203	B SC HB 13 PC-V0 1023	For B 1413.., B 1813.., B 2213..	Traffic yellow



Wall brackets

96510005	B WL 7035	For B 08... - B 26...	Light grey
96510004	B WL 7024	For B 08... - B 26...	Graphite grey



Mounting panels, laminated paper, 2 mm

96605200	B M 2213	For B 2213..	
----------	----------	--------------	--



Sets of screws

96300000	B SHR	D (for optional screwing of enclosures B 0808 - 2617)
96600010	B M-SHR	C (for fixing mounting panels B M 1008-2736)
96700000	B FP-SHR	A (for fixing front panels)



Distance bolts

96708000 DIBLZ AK 30x5/IM3/8 ND = 2,4 - 2,6, for B...04



Blanking plugs to determine the hinge side

96410000 B VS 3000 Flame red
96410005 B VS 7035 Light grey
96410004 B VS 7024 Graphite grey



DIN rail acc. to DIN EN 60715 TH 15

22151901 TS 15 For EM/ET 214, EM/ET 221-223, EM/ET 232, EM/ET 237, BCD 200, B 2213..



DIN rail acc. to DIN EN 60715 G 32

22321901 TS 32 For EM/ET 214, EM/ET 221-223, EM/ET 232, EM/ET 237, B 22130.



DIN rail acc. to DIN EN 60715 TH 35

22351901 TS 35 For EM/ET 214, EM/ET 221-223, EM/ET 232, EM/ET 237, BCD 200, B 2213..



Pressure compensation membrane DAE

52011000 DAE-D11 Self-adhesive membrane ø 11 mm