

## Datasheet

Stock No: 286-3370

# RS Pro Round Tube 2-Way Connector, strut profile Type 1

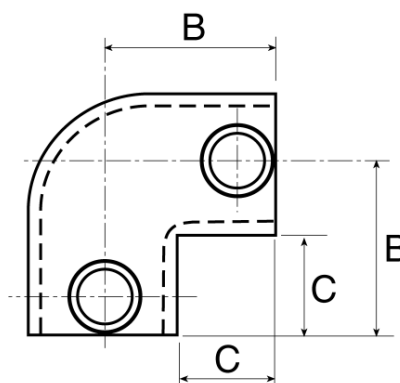


## Product Details

90° Elbow

Used as an end joint between the top rail and the upright

Dimensions (mm)		
Tube Size Ref.	B	C
1	48	25
2	60	33
3	67	36





ENGLISH

## Specifications:

Structural Element Type	Round Tube
Connector Type	2-Way Connector
Fits Strut Profile	Type 1
Fits Tube Diameter	33.7mm
Product Family	RS Handrail System
Material	Cast Iron
Product System	125