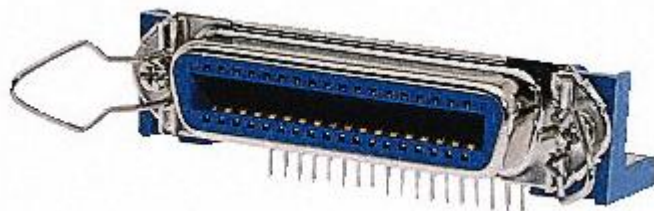
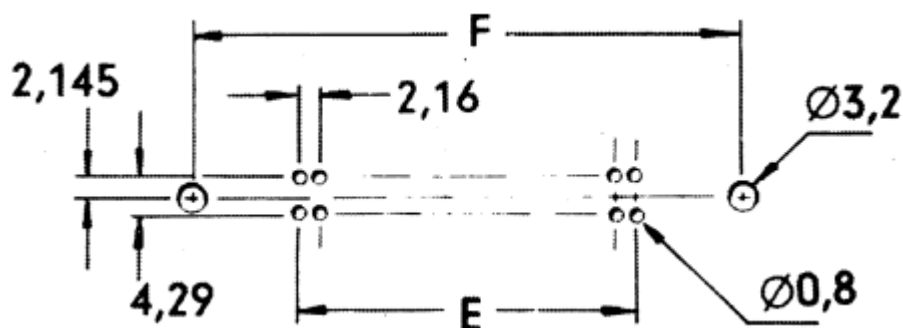


Datasheet

RS Pro G57 Series 50 Way Right Angle PCB Socket Through Hole



Dimensions:



Specifications:

- Shell: Steel, Nickel Over Copper Plated
- Insulator: UL94V-0
- Contacts: Brass Alloy Gold Plated on Contact Tin Plated
- Current Rating: 1A
- Contact Resistance: <25m ohm
- Insulation Resistance: >1000 ohm at 500V
- Operating Temperature Range: -55°C to +105°C