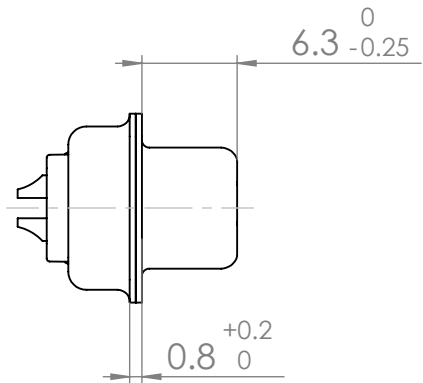
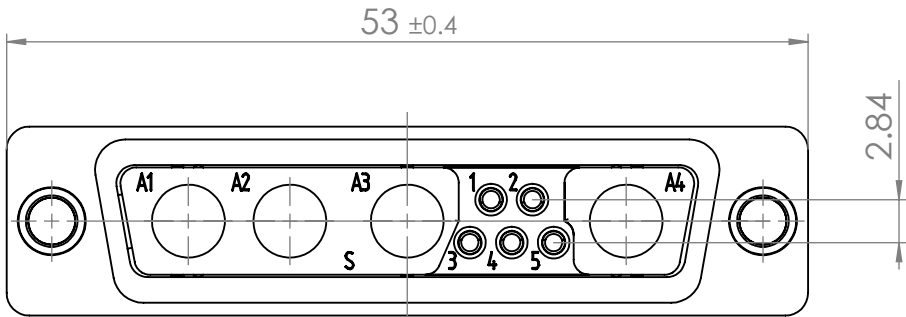
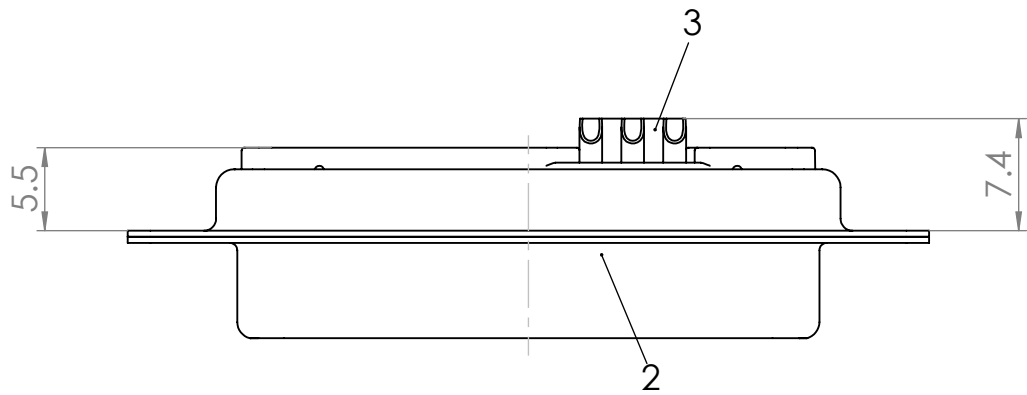
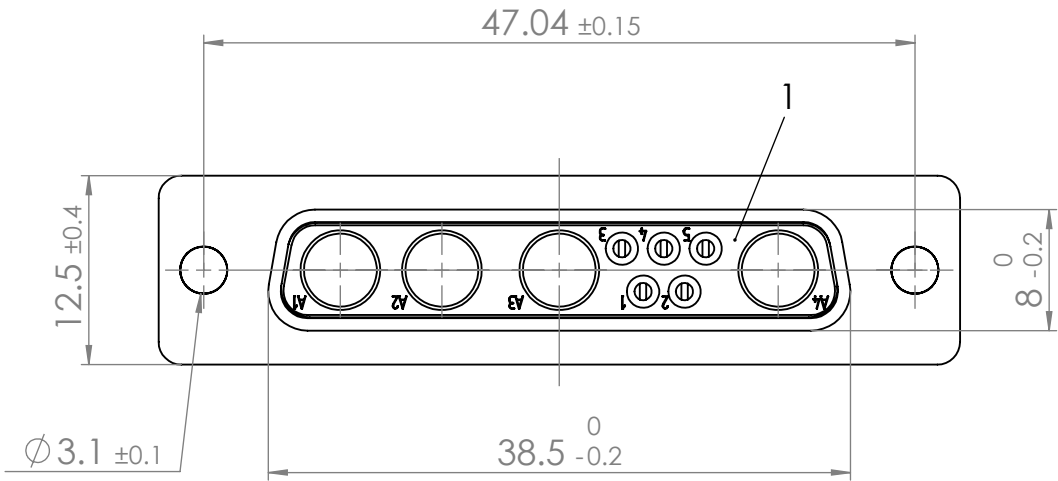



COMMENT:  
ALL RIGHTS ARE RESERVED BY US FOR THIS DRAWING. WITHOUT OUR PRIOR CONSENT,  
IT MAY NEITHER BE DUBICATED NOR MADE AVAILABLE TO A THIRD PARTY.  
AND IT ALSO MAY NOT BE IMPROPERLY USED BY TE RECEIVER, OR A THIRD PARTY.



RoHS compliant  
by exemption

3	5	Signal contact	SO / Brass	0.8µm Au / AWG 20
2	1	Shell	Steel	tin plated
1	1	Insulator	PBT (-55°C to +130°C) acc. UL94V-0	green
No.	St.	Part	Type Description/Material	Surface plating/Colour/Class

FUNCTIONAL SYMBOLS		THIS DRAWING CONTAINS INFORMATION THAT IS PROPRIETARY TO MOLEX ELECTRONIC TECHNOLOGIES, LLC AND SHOULD NOT BE USED WITHOUT WRITTEN PERMISSION											
F <sub>A</sub> = 0		DIMENSION UNITS mm		SCALE 2:1		MEASUREMENTS WITHOUT TOLERANCE ACC. TO ISO 2768-m				molex			
F <sub>C</sub> = 0						CURRENT REVISION							
F <sub>F</sub> = 0						DRWN: DRAWN BY yyakovlyeva 01-02-2019				FCT D-Sub Mixed-Layout Connector			
						APPR: APPR BY MTeubel 06-02-2019							
		2		24130		INITIAL REVISION				PRODUCT CUSTOMER DRAWING			
		1				DRWN: DRAWN BY Denzinger 08-07-2002				MATERIAL NUMBER			
		REV.		CH.-NO.		APPR: APPR BY dittel 08-07-2002				1731070062			
		REPLACEMENT FOR:		FRIST ANGLE PROJECTION		DRAWING				DOCUMENT NUMBER			
						A3-SIZE				FM9W4S-K121			
										CUSTOMER			
										GENERAL MARKET			
										SHEET NUMBER			
										1 OF 1			