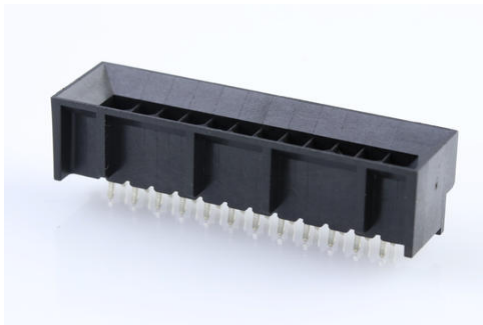




**Part Number :** [444322401](#)  
**Product Description :** Micro-Fit BMI Header, Dual Row, Vertical, with PCB Polarizing Peg, 24 Circuits, Tin (Sn) Plating, Kinked Tails  
**Series Number :** 44432  
**Status :** Active  
**Product Category :** PCB Headers and Receptacles



## Documents & Resources

### Drawings

[444322401 sd.pdf](#)  
[PK-44432-001-001.pdf](#)

### 3D Models and Design Files


[STEP AP242](#)  
[SOLIDWORKS](#)  
[Creo](#)  
[Symbol and Footprint \(Multi-Format\)](#)  
[SYM-44432-2401-001.zip](#)  
[SYM-44432-240X-001.zip](#)

### Specifications

[PS-44300-001-001.pdf](#)  
[443000002-TS-000.pdf](#)

## Product Environment Compliance

### Compliance

GADSL/IMDS	Compliant with Exemption 44; 33
China RoHS	 per SJ/T 11365-2006
EU ELV	Not Relevant
Low-Halogen Status	Not Low-Halogen per IEC 61249-2-21
REACH SVHC	Not Contained per D(2024)7663-DC (21 Jan 2025)

EU RoHS	Compliant per EU 2015/863
---------	---------------------------

#### Compliance Statements

- EU RoHS
- REACH SVHC
- Low-Halogen

#### Industry Documents

- IPC 1752A Class C
- IPC 1752A Class D
- Molex Product Compliance Declaration
- IEC-62474
- chemSHERPA (xml)

#### Substances of Interest

- PFAS

#### EU RoHS Certificate of Compliance

#### Additional Product Compliance Information

## Part Details

### General

Status	Active
Category	PCB Headers and Receptacles
Series	44432
Description	Micro-Fit BMI Header, Dual Row, Vertical, with PCB Polarizing Peg, 24 Circuits, Tin (Sn) Plating, Kinked Tails
Application	Board-to-Board, Power, Wire-to-Board
Comments	High Temperature, Square Pin, Solder Type
Component Type	PCB Header
Product Name	Micro-Fit BMI
UPC	800756378077

### Agency

CSA	LR19980
UL	E29179

## Electrical

Current - Maximum per Contact	8.5A
Voltage - Maximum	250V AC (RMS)/DC

## Physical

Breakaway	No
Circuits (Loaded)	24
Circuits (maximum)	24
Color - Resin	Black
Durability (mating cycles max)	30
Flammability	94V-0
Glow-Wire Capable	No
Material - Metal	Brass
Material - Plating Mating	Tin
Material - Plating Termination	Tin
Material - Resin	Nylon
Net Weight	3.828/g
Number of Rows	2
Orientation	Vertical
Packaging Type	Tray
PCB Locator	Yes
PCB Retention	Yes
PCB Thickness - Recommended	1.60mm
PC Tail Length	3.30mm
Pitch - Mating Interface	3.00mm
Plating min - Mating	5.080µm
Plating min - Termination	5.080µm
Polarized to Mating Part	Yes
Polarized to PCB	Yes
Shrouded	Fully
Stackable	No
Temperature Range - Operating	-40° to +105°C
Termination Interface Style	Through Hole

## Solder Process Data

Max-Duration	5
Lead-Free Process Capability	WAVE
Max-Cycle	1
Max-Temp	260

---

## Mates With / Use With

### Mates with Part(s)

Description	Part Number
Micro-Fit BMI Dual Row Receptacle Housings	<u>44133</u>
Micro-Fit BMI Right-Angle Dual Row PCB Receptacles	<u>44764</u>
Micro-Fit BMI Vertical Dual Row PCB Receptacles	<u>44769</u>