



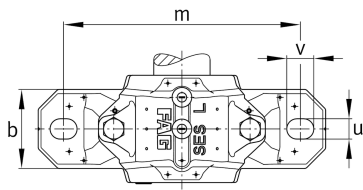
FAG

SES532-L

Plummer block housing

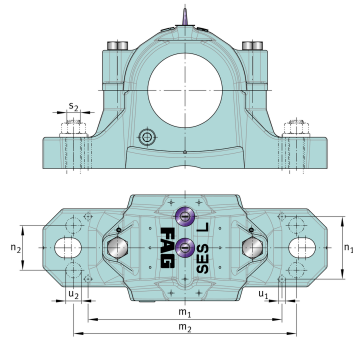
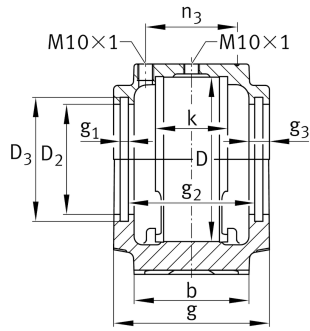
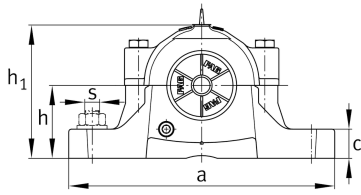
Split plummer block housing for various bearing designs. The SNV series will be replaced by the new SES series in 2022.

Technical information



Main Dimensions & Performance Data

D	290 mm	Outside diameter bearing
a	550 mm	Length base
h ₁	344 mm	Height
g	235 mm	Width housing body
K	114 mm	Width bearing seat
≈m	56.3 kg	Weight



Dimensions

b	160 mm	Width base
c	60 mm	Height base
h	170 mm	Base to shaft centerline height
m	470 mm	Distance fixing bore
s	31.75 mm	Screw size
s	M30	Size of fixing screws
u	35 mm	Width slot
v	42 mm	Length slot
D 2	202.5 mm	Diameter sealing
D 3	212.5 mm	Diameter sealing groove
D 5	209.2 mm	Outside diameter sealing labyrinth
g 1	6 mm	Width sealing groove
g 2	213 mm	Distance sealing
g 3	15 mm	Wall thickness
g 4	36 mm	Distance oil lubrication
m 1	394 mm	Distance holes aligned pins m1
n 3	152 mm	Distance lubrication
n 4	215 mm	Distance lubrication sealing
u 1	12 mm	Bore diameter u1
u 2	26 mm	Bore diameter u2