

Features

- Rated currents up to 50A
- Terminal Block
- The compact size can be applied to various situations.
- General purpose filtering performance

RS PRO EMI Filters

RS Stock No.: 286-7335



RS PRO is the own brand of RS. The RS PRO Seal of Approval is your assurance of professional quality, a guarantee that every part is rigorously tested, inspected, and audited against demanding standards. Making RS PRO the Smart Choice for our customers.

Product Description

High performance Three phase chassis mount EMI filter Applications:

- *Electrical and electronic equipment*
- *Medical equipment*
- *Office automation equipment*
- *New energy equipment ,Communication equipment;*

General Specifications

The compact size can be applied to various situations.

This filter is also available as one-stage filters in noisy environment.

Electrical Specifications

*Size(Length*Width*Height) 233*88*93mm*

Weight 1.86kgs

Mounting Hole Spacing 250mm*68mm

Mechanical Specifications

Rated Voltage Max. 300/520VAC

<i>Rated currents</i>	50A
<i>Operating frequency</i>	50/60Hz
<i>Hipot Rating</i>	Line to Ground 2750vdc; Line to Line 2250Vdc; Line to Neutral 1300vdc
<i>Temperature range</i>	-25°C~+85°C
<i>Leakage current</i>	6.4mA/9.2mA
<i>Inductance</i>	L: 4×1.0mH ;
<i>Capacitance</i>	Cx: 2.2uF*6 ; Cy:47000pF;
<i>Resistance</i>	R1: 330K ohm*3 ; R2: 1M ohm

Protection Category

IP Rating IP40

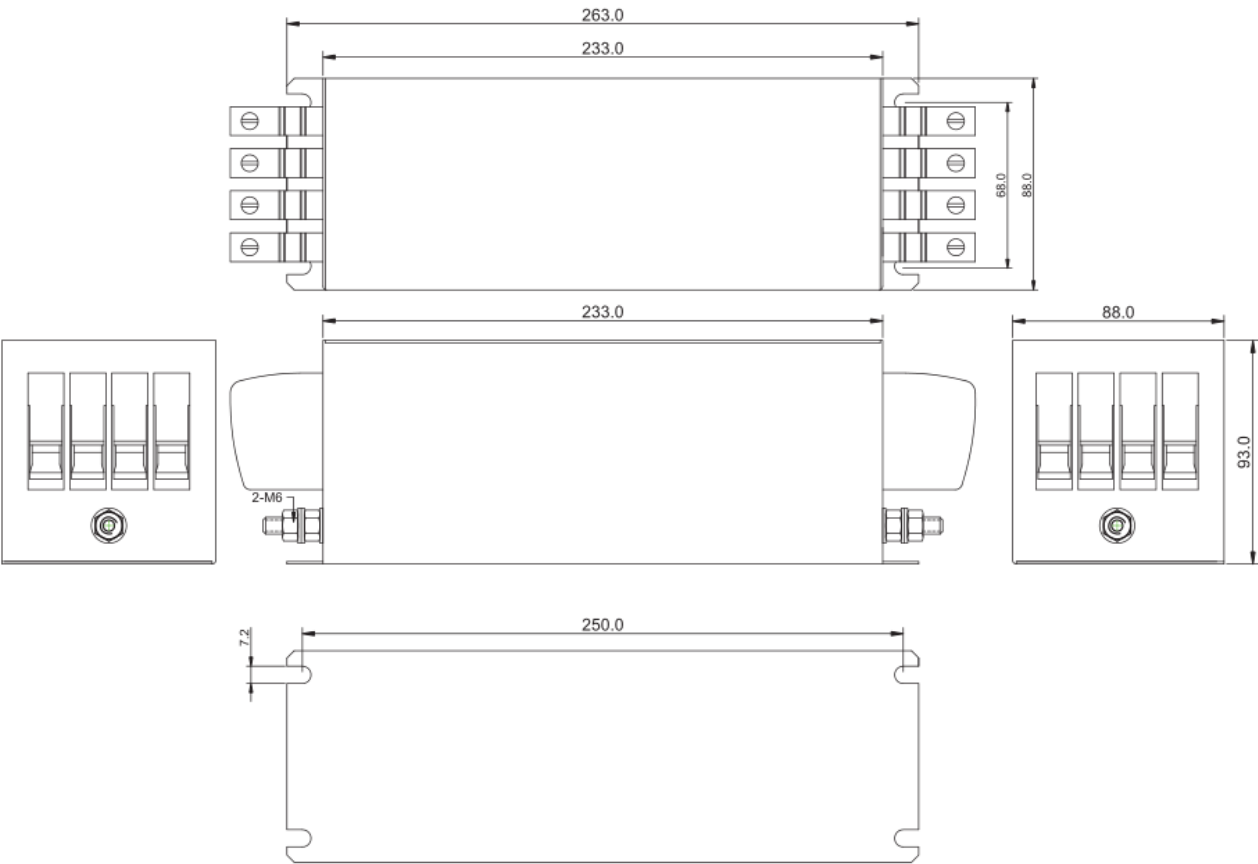
Approvals

<i>Declarations</i>	CE UKCA REACH ROHS
<i>Safety Standard</i>	IEC 60939-3:2015; EN 60950-1:2006 +A11:2009+A1:2010+A12:2011+A2:2013

Similar Products

Stock No.	Brand	Phase Type	Mounting	Current	Dimension
237-8769	RS PRO	Three phase	Chassis mounting	65A	280*110*110mm

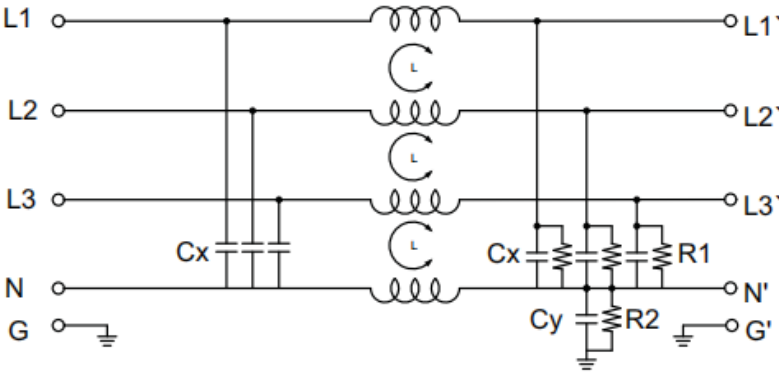
Physical Dimensions



Applicable wire
wire section:16.0mm ²
Torque:2.2Nm
Stripping length:17.0mm

0 ~ 10	±0.3
10 ~ 100	±0.5
100 ~ 150	±0.8
150 ~ 200	±1.0

Electrical Schematic



Insertion loss(IN 50ohm system according IEC/CISPR NO.17)

