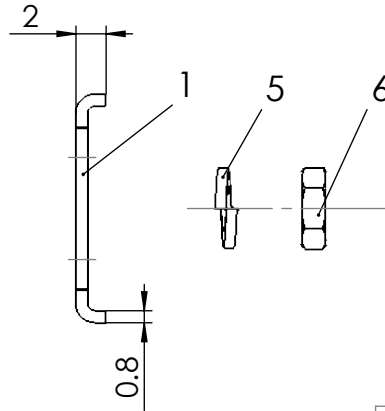
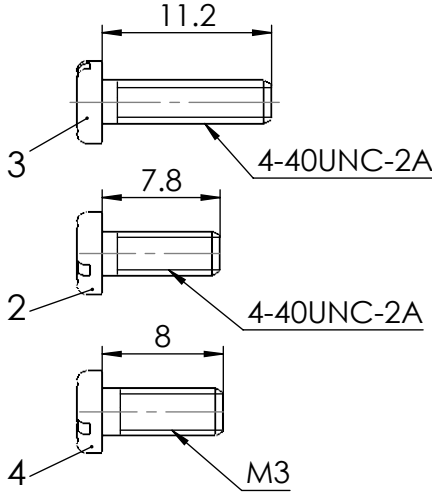
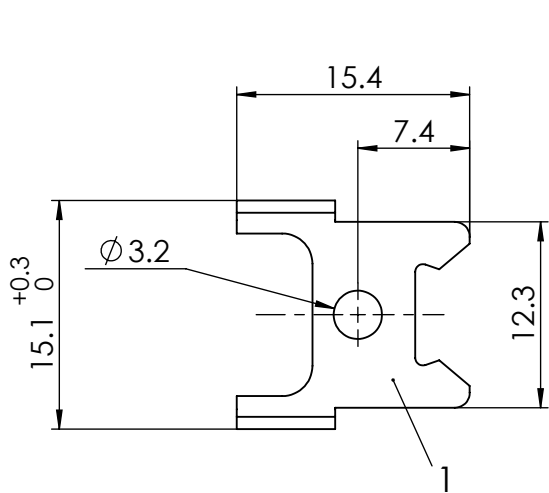


COMMENT:  
ALL RIGHTS ARE RESERVED BY US FOR THIS DRAWING. WITHOUT OUR PRIOR CONSENT,  
IT MAY NEITHER BE DUBLICATED NOR MADE AVAILABLE TO A THIRD PARTY,  
AND IT ALSO MAY NOT BE IMPROPERLY USED BY TE RECEIVER, OR A THIRD PARTY.

1		2		3		4		5	6
Part No.		Pos. 1 Lock plate (quantity)	Pos. 2 Screw 4-40 / 7.8mm (quantity)	Pos. 3 Screw 4-40 / 11.2mm (quantity)	Pos. 4 Screw M3 / 8.0mm (quantity)	Pos. 5 Spring washer (quantity)	Pos. 6 Nut (quantity)	Package	Notice
Standard Assembly	F1044-1	2	2	-	-	2	2	in pairs	Packed together in a bag
	F1044-1S	max. 5000	max. 5000	-	-	max. 5000	max. 5000	bulk packed	Individually packed in bags
	F1044-1N	2	2	-	-	2	2	in pairs	Packed together in a bag without label
	F1044-1M3	2	-	-	2	2	2	in pairs	Packed together in a bag
Assembly on FCT Hood	F1044-1H	2	-	2	-	-	-	in pairs	Packed together in a bag
	F1044-1HS	max. 5000	-	max. 5000	-	-	-	bulk packed	Individually packed in bags
	F1044-1H-1608	2	-	2	-	-	-	in pairs	Packed together in a bag with customized label



RoHS compliant

MATERIAL NO.	TYPE DESCRIPTION
1731120307	F1044-1
1731120365	F1044-1H
	F1044-1HS
1731121624	F1044-1H-1608

F1044			Stainless steel			blank		
Part No.			Material			Surface plating/Colour/Class		
THIS DRAWING CONTAINS INFORMATION THAT IS PROPRIETARY TO MOLEX ELECTRONIC TECHNOLOGIES, LLC AND SHOULD NOT BE USED WITHOUT WRITTEN PERMISSION								
SYMBOLS	DIMENSION UNITS	SCALE	MEASUREMENTS WITHOUT TOLERANCE ACC. TO ISO 2768-m				<div>molex</div> <div>FCT-Lockplate F1044-1</div>	
<div>▽<sub>F</sub> = 0</div>	mm	5:1	CURRENT REVISION					
<div>▽<sub>E</sub> = 0</div>								
<div>▽<sub>S</sub> = 0</div>								
<div>▽<sub>S</sub> = 0</div>			DRWN: DRAWN BY MTeubel 09-09-2020					
<div>▽<sub>S</sub> = 0</div>			APPR: APPR BY MTeubel 09-09-2020					
<div>▽<sub>S</sub> = 0</div>			INITIAL REVISION				PRODUCT CUSTOMER DRAWING	
<div>▽<sub>S</sub> = 0</div>							MATERIAL NUMBER	REVISION
<div>▽<sub>S</sub> = 0</div>	7	24140	DRWN: DRAWN BY Denzinger 02-09-2002				see table	
<div>▽<sub>S</sub> = 0</div>	REV.	CH.-NO.	APPR: APPR BY Floßmann 02-09-2002				7	
<div>▽<sub>S</sub> = 0</div>	REPLACEMENT FOR:		THIRD ANGLE PROJECTION	DRAWING	DOCUMENT NUMBER		CUSTOMER	SHEET NUMBER
<div>▽<sub>S</sub> = 0</div>			<div></div>	A4-SIZE	F1044-1_D		GENERAL MARKET	1 OF 1

**molex**

FCT-Lockplate F1044-1

PRODUCT CUSTOMER DRAWING

MATERIAL NUMBER

see table

REVISION

7