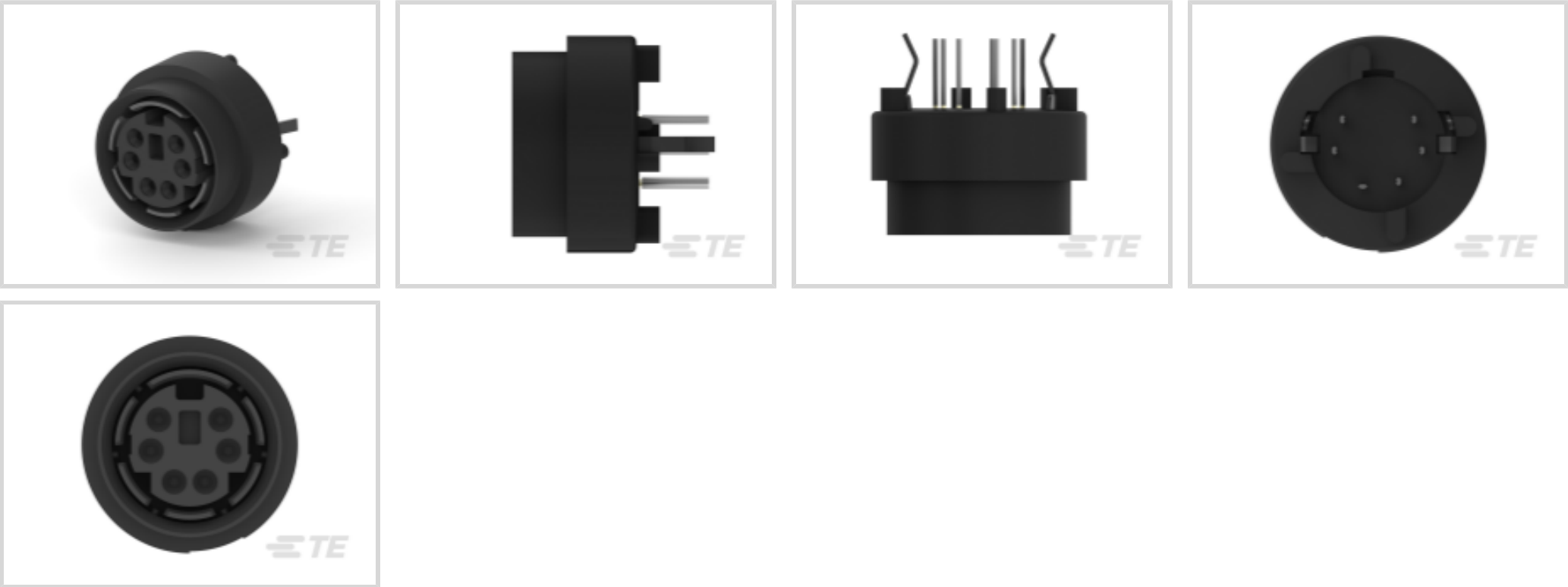




Connectors > Circular Connectors > DIN Connectors



Circular DIN Connector Type: **Mini DIN**

Connector System: **Wire-to-Board**

Number of Positions: **6**

Connector Contact Load Condition: **Fully Loaded**

Mating Alignment Type: **Polarization**

Features

Product Type Features

Circular DIN Connector Type	Mini DIN
Connector System	Wire-to-Board
Connector & Contact Terminates To	Printed Circuit Board

Configuration Features

PCB Mount Orientation	Vertical
Number of Positions	6
Connector Contact Load Condition	Fully Loaded

Electrical Characteristics

Operating Voltage	30 VAC
-------------------	--------

Body Features

Shield Plating Material	Tin
Shield Plating Finish	Bright
Shield Material	Brass
Panel Ground Feature Type	None
Primary Product Color	Black
Shield Underplate Thickness	1.27 µm[50 µin]



Contact Features

Contact Underplating Material	Nickel
Contact Underplating Material Thickness	1.27 µm[50 µin]
PCB Contact Termination Area Plating Material Finish	Matte
Contact Mating Area Plating Material Thickness	.76 µm[30 µin]
Contact Shape & Form	Tuning Fork
PCB Contact Termination Area Plating Material Thickness	2.54 µm, 3.81 µm[100 µin][150 µin]
Contact Layout	Staggered
Contact Mating Area Plating Material	Gold (Au)
Contact Base Material	Phosphor Bronze
PCB Contact Termination Area Plating Material	Tin
Contact Current Rating (Max)	.5 A

Termination Features

Termination Method to PCB	Through Hole - Solder
Termination Post & Tail Length	3.18 mm[.125 in]

Mechanical Attachment

Panel Mount Feature	With
Panel Mount Feature Type	Screw Nut
Mating Alignment	With
PCB Mount Alignment	With
PCB Mount Alignment Type	Hold-Down
Mating Alignment Type	Polarization
PCB Mount Retention	With
PCB Mount Retention Type	Kinked Legs
Connector Mounting Type	Board Mount

Housing Features

Housing Material	Thermoplastic
Centerline (Pitch)	6.5 mm[.26 in]

Dimensions

Product Width	17.78 mm[.7 in]
Product Length	22.61 mm[.89 in]
PCB Thickness (Recommended)	2.68 mm[.11 in]



Connector Height	13.08 mm[.51 in]
------------------	------------------

Operation/Application

Shielded	No, Yes
Circuit Application	Signal

Industry Standards

UL Flammability Rating	UL 94V-0
------------------------	----------

Packaging Features

Packaging Quantity	60
Packaging Method	Tray

Product Compliance

For compliance documentation, visit the product page on TE.com>

EU RoHS Directive 2011/65/EU	Compliant
EU ELV Directive 2000/53/EC	Compliant
China RoHS 2 Directive MIIT Order No 32, 2016	No Restricted Materials Above Threshold
EU REACH Regulation (EC) No. 1907/2006	Current ECHA Candidate List: JAN 2025 (247) Candidate List Declared Against: JUNE 2022 (224) Does not contain REACH SVHC
Halogen Content	Low Halogen - Br, Cl, F, I < 900 ppm per homogenous material. Also BFR/CFR/PVC Free
Solder Process Capability	Wave solder capable to 265°C

Product Compliance Disclaimer

This information is provided based on reasonable inquiry of our suppliers and represents our current actual knowledge based on the information they provided. This information is subject to change. The part numbers that TE has identified as EU RoHS compliant have a maximum concentration of 0.1% by weight in homogenous materials for lead, hexavalent chromium, mercury, PBB, PBDE, DBP, BBP, DEHP, DIBP, and 0.01% for cadmium, or qualify for an exemption to these limits as defined in the Annexes of Directive 2011/65/EU (RoHS2). Finished electrical and electronic equipment products will be CE marked as required by Directive 2011/65/EU. Components may not be CE marked. Additionally, the part numbers that TE has identified as EU ELV compliant have a maximum concentration of 0.1% by weight in homogenous materials for lead, hexavalent chromium, and mercury, and 0.01% for cadmium, or qualify for an exemption to these limits as defined in the Annexes of Directive 2000/53/EC (ELV). Regarding the REACH Regulation, the information TE provides on SVHC in articles for this part number is based on the latest European Chemicals Agency (ECHA) 'Guidance on requirements for substances in articles' posted at this URL: <https://echa.europa.eu/guidance-documents/guidance-on-reach>

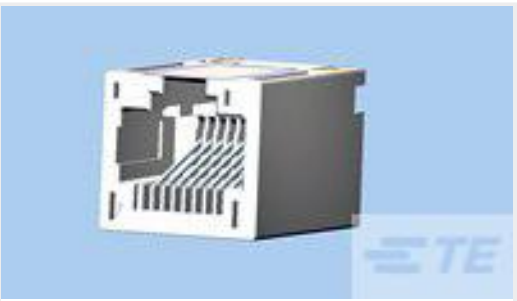
Customers Also Bought



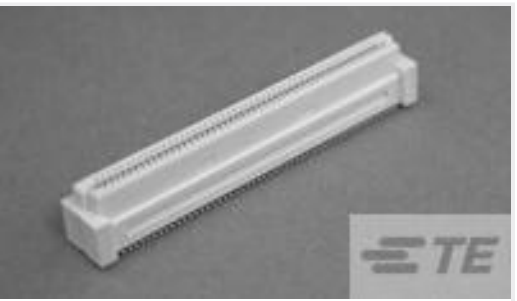
TE Part #1-1871940-4
DYNAMIC 1900D REC ASSY CAGE 8P



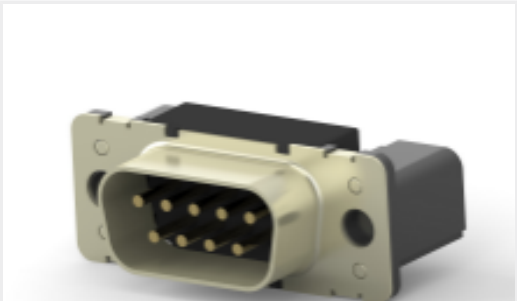
TE Part #2013874-1
ME CONN (M) DUMMY PLUG ASSY



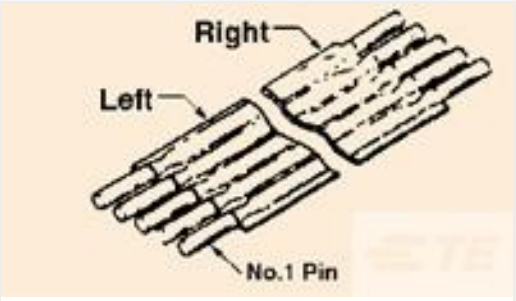
TE Part #2229093-1
MOD JACK ASSEMBLY V-TYPE H=21.7mm



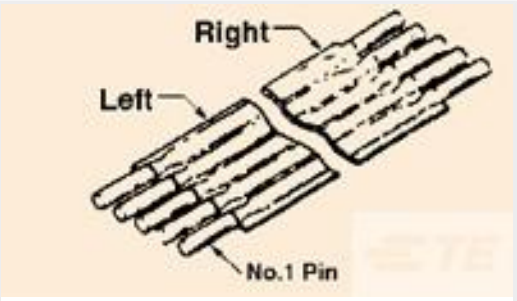
TE Part #5-5179233-1
0.8FH,R13H.5,040,08/Sn,TU,SC



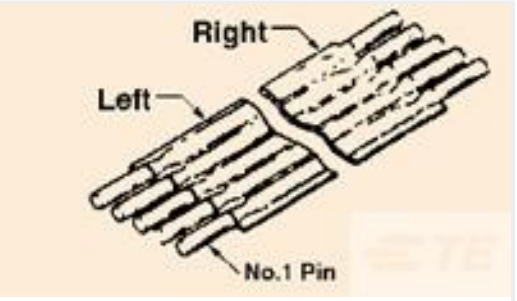
TE Part #1-1740195-5
9P HD20 PIN HEADER



TE Part #3-1437130-6
FSN-11A-8=NOMEX FS STD



TE Part #2-1447183-7
FSN-12.5A-13=JUMPER NOMEX



TE Part #6-1447183-1
FSN-15A-25=JUMPER NOMEX



TE Part #5917630-2
REC ASS'Y 60P 1.27FHBB



TE Part #5917630-3
REC ASS'Y 80P 1.27FHBB

Documents

CAD Files

3D PDF

3D

Customer View Model

ENG_CVM_CVM_5750327-2_O_c-5750327-2-o.2d_dxf.zip

English

Customer View Model

ENG_CVM_CVM_5750327-2_O_c-5750327-2-o.3d_igs.zip

English

Customer View Model

ENG_CVM_CVM_5750327-2_O_c-5750327-2-o.3d_stp.zip

English

By downloading the CAD file I accept and agree to the [Terms and Conditions](#) of use.

Product Specifications

Application Specification

English