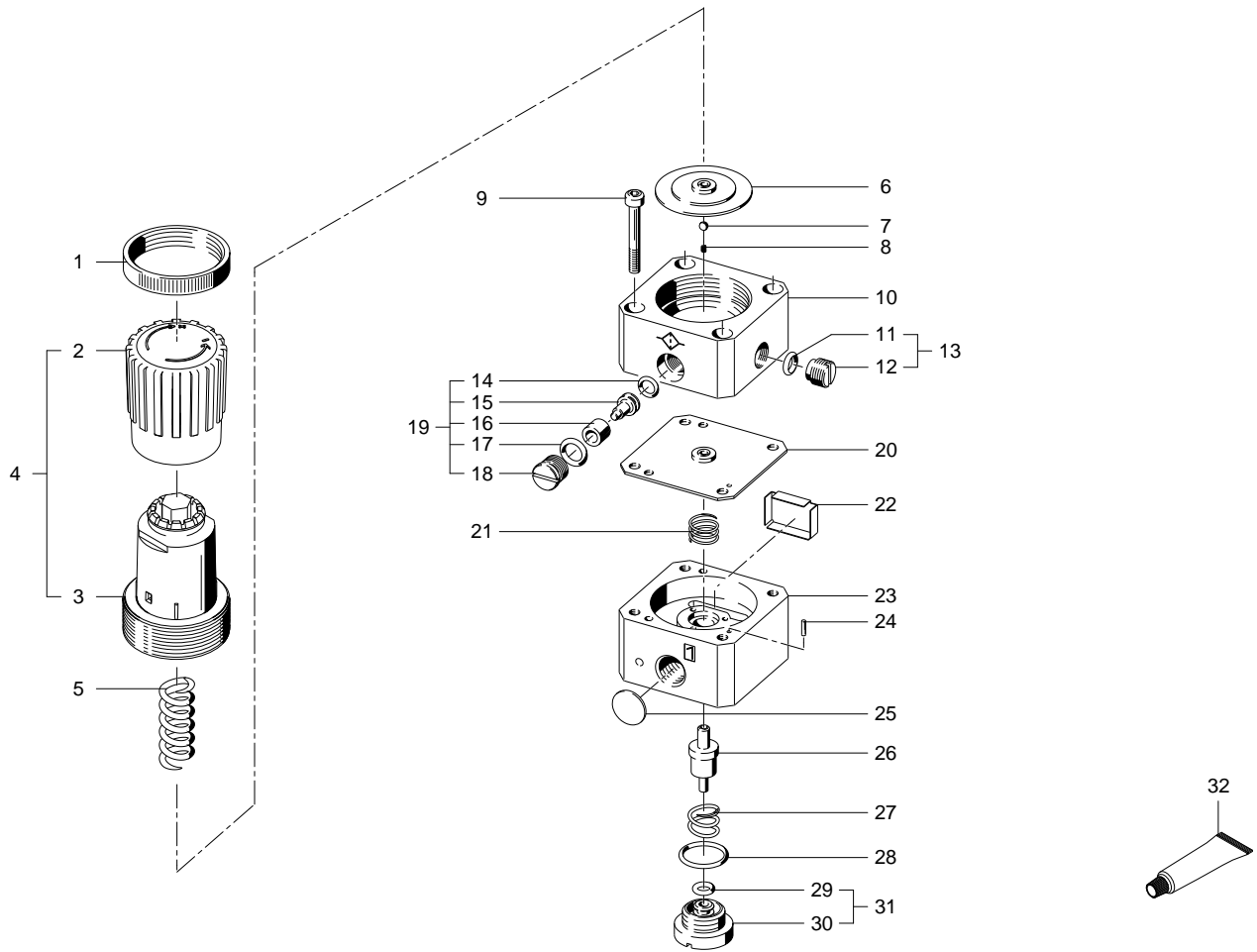


159500 LRP-1/4-0,7 Precision pressure regulator - Series from 11-2014
0.7 BAR



159500 LRP-1/4-0,7 Precision pressure regulator - Series from 11-2014

0.7 BAR

Pos.	Part no.	Type	Note	Qty.	Unit
A	8038296	LRP-1/4-0,7-10:FR11-2014 Set of wearing parts	Spare parts: 6, 11, 14, 17, 20, 26, 28, 29	1	PC
1	398011	LRVS-D-MINI M36X1,5 Knurled nut		1	PC
2	397003	LR/LFR-...-D-MINI Adjusting knob		1	PC
3		LR/LFR-D-MINI Cover module	Not available separately, see position 4 Tightening torque 9 Nm / 6.6 lbf ft	1	PC
4	655460	LR/LFR-...-D-MINI Adjusting knob	Position available until max. 12/31/2030!	1	PC
5	345006	LRP-1/4-0,7 Compression spring		1	PC
6		LRP-1/4-...:STEUER Diaphragm module	Not available separately, see position A Grease using during assembly. See position 32	1	PC
7	200863	5-G20-1.4034 ball DIN5401		1	PC
8	345038	LRP-1/4-... Compression spring		1	PC
9		ISO 4762-M4X30-8.8 Socket head screw	Tightening torque 2.25 Nm / 1.7 lbf ft Not available	4	PC
10		LRP-1/4-... Control housing	Not available	1	PC
11		B-4X1,2-N-NBR75 O-ring ISO3601	Not available separately, see position 13+999 Grease using during assembly. See position 32	1	PC
12		LR/LFR-...-D-MINI Plug screw	Not available separately, see position 13	1	PC
13	373845	LR/LFR-1/8-D-MINI Plug screw	Tightening torque 1.5 Nm / 1.1 lbf ft	1	PC
14		1,15X1-N-NBR70 O-ring	Not available separately, see position 19+999 Grease using during assembly. See position 32	1	PC
15		LRP-1/4- Disc	Not available separately, see position 19	1	PC
16		LRP-1/4- Filter	Not available separately, see position 19	1	PC
17		B-7X2-N-NBR70 O-ring ISO3601	Not available separately, see position 19+999 Grease using during assembly. See position 32	1	PC
18		LRP-1/4- Throttle housing	Not available separately, see position 19	1	PC
19	679785	LRP-1/4- flow control filter	Tightening torque 0.4 Nm / 0.3 lbf ft	1	PC
20		LRP-1/4-... Diaphragm module	Not available separately, see position A	1	PC
21	345043	LRP-1/4-2,5 BAR Compression spring		1	PC
22	345024	LRP-1/4-... Strainer		1	PC
23		LRP-1/4:N Housing	Not available	1	PC
24		1,5H9X7,6-1.2210 Cylindrical pin	Not available	1	PC
25		LRP-1/4-... Strainer	Not available	1	PC
26		LRP-1/4-... Valve seat	Not available separately, see position A Grease using during assembly. See position 32	1	PC

Pos.	Part no.	Type	Note	Qty.	Unit
27	345007	LRP-1/4-... Compression spring		1	PC
28		B-17,1X1,6-N-NBR70 O-ring ISO3601	Not available separately, see position A Grease using during assembly. See position 32	1	PC
29		B-4,48X1,74-N-NBR70 O-ring ISO3601	Not available separately, see position 31+999 Grease using during assembly. See position 32	1	PC
30		LRP-1/4-... Vent screw	Not available separately, see position 31	1	PC
31	681431	LRP-1/4-... Vent screw		1	PC
32	397446	LUB-KB2-SILIKONFREI-20ML Lubricating grease		1	PC