

# BC 35,6 OT U22 BK - Upper housing part



1227303

<https://www.phoenixcontact.com/in/products/1227303>

Please be informed that the data shown in this PDF document is generated from our online catalog. Please find the complete data in the user documentation. Our general terms of use for downloads are valid.



DIN rail housing for use in distribution boards in accordance with DIN 43880, Upper housing part (U22) with vents, Installation depth connection technology: 22.35 mm, width: 35.6 mm, height: 89.7 mm, depth: 49.78 mm, color: light gray (similar RAL 7035)

## Your advantages

- Coordinated housing and connection system for faster device development
- Individual online configuration for diverse applications in building automation
- Variety of connection technology
- Can be mounted on the DIN rail or the wall
- With DIN-rail-mountable bus connector and power connector system as an option
- Tool-free mounting
- Available in overall widths from 1 ... 9 width units (17.8 mm ... 161.6 mm)
- Compliant with DIN EN 43880

## Commercial data

Item number	1227303
Packing unit	10 pc
Minimum order quantity	10 pc
Note	Made to order (non-returnable)
Sales key	ACH
Product key	ACHBAB
GTIN	4063151781934
Weight per piece (including packing)	18.636 g
Weight per piece (excluding packing)	12.2 g
Customs tariff number	84879090
Country of origin	DE

# BC 35,6 OT U22 BK - Upper housing part



1227303

<https://www.phoenixcontact.com/in/products/1227303>

## Technical data

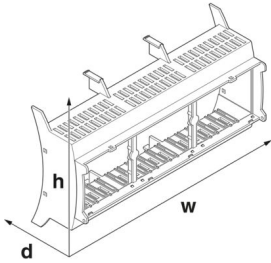
### Notes

Assembly note	Please observe the application note in the download area.
---------------	---

### Product properties

Product type	Upper housing part
Housing type	DIN rail housing for use in distribution boards in accordance with DIN 43880
Housing series	BC
Product family	BC 35,6..
Max. number of positions	22 (pitch: 2.5 mm)
	16 (pitch: 3.5 mm)
	12 (pitch: 5 mm)
	8 (pitch: 7.5 mm)
Type	Upper housing part (U22) with vents
Ventilation openings present	yes

### Dimensions

Dimensional drawing	
Width	35.6 mm
Height	89.7 mm
Depth	49.78 mm
Horizontal pitch	2 Div.

### PCB design

PCB thickness	1.4 mm ... 1.8 mm
---------------	-------------------

### Material specifications

Color (Housing)	light gray (RAL 7035)
Flammability rating according to UL 94	V0
Housing material	PC
Surface characteristics	untreated

### Environmental and real-life conditions

#### Vibration test

Specification	IEC 60068-2-6:2007-12
---------------	-----------------------

# BC 35,6 OT U22 BK - Upper housing part



1227303

<https://www.phoenixcontact.com/in/products/1227303>

Frequency	10 - 150 - 10 Hz
Sweep speed	1 octave/min
Amplitude	0.15 mm (10 Hz ... 58.1 Hz)
Acceleration	2g (58.1 Hz ... 150 Hz)
Test duration per axis	2.5 h
Test directions	X-, Y- and Z-axis

## Glow-wire test

Specification	IEC 60695-2-11:2014-02
Temperature	850 °C
Time of exposure	30 s

## Mechanical strength / tumbling barrel

Specification	IEC 60068-2-31:2008-05
Height of fall	50 cm
Frequency	50

## Shocks

Specification	IEC 60068-2-27:2008-02
Pulse shape	Half-sine
Acceleration	15g
Shock duration	11 ms
Number of shocks per direction	3
Test directions	X-, Y- and Z-axis (pos. and neg.)

## Degree of protection (IP code)

Specification	IEC 60529:1989-11 + AMD 1:1999-11 + AMD 2:2013-08
---------------	---

## Ambient conditions

Max. IP code to attain	IP20
Ambient temperature (operation)	-40 °C ... 105 °C (depending on power dissipation)
Ambient temperature (storage/transport)	-40 °C ... 70 °C
Ambient temperature (assembly)	-5 °C ... 100 °C
Relative humidity (storage/transport)	95 %

## PCB data

Number of PCB holders	4
Type of PCB mount	Latching
Thickness of the PCB	1.4 mm ... 1.8 mm

## Mounting

Mounting type	Snap in
---------------	---------

## Packaging specifications

Type of packaging	packed in cardboard
Outer packaging type	Carton

# BC 35,6 OT U22 BK - Upper housing part

1227303

<https://www.phoenixcontact.com/in/products/1227303>



## Drawings

Dimensional drawing



Schematic figure for illustrating the item dimensions. The figure is not of the desired product. For further details, refer to the product drawings in the "Downloads" tab.

# BC 35,6 OT U22 BK - Upper housing part



1227303

<https://www.phoenixcontact.com/in/products/1227303>

## Approvals

📄 To download certificates, visit the product detail page: <https://www.phoenixcontact.com/in/products/1227303>



**UL Recognized**

Approval ID: E240868

# BC 35,6 OT U22 BK - Upper housing part



1227303

<https://www.phoenixcontact.com/in/products/1227303>

## Classifications

### ECLASS

ECLASS-11.0	27182702
ECLASS-13.0	27190603

### ETIM

ETIM 9.0	EC002779
----------	----------

### UNSPSC

UNSPSC 21.0	31261500
-------------	----------

# BC 35,6 OT U22 BK - Upper housing part



1227303

<https://www.phoenixcontact.com/in/products/1227303>

## Environmental product compliance

### EU RoHS

Fulfills EU RoHS substance requirements	Yes, No exemptions
---	--------------------

### China RoHS

Environment friendly use period (EFUP)	EFUP-E
	No hazardous substances above the limits

### EU REACH SVHC

REACH candidate substance (CAS No.)	No substance above 0.1 wt%
-------------------------------------	----------------------------

# BC 35,6 OT U22 BK - Upper housing part

1227303

<https://www.phoenixcontact.com/in/products/1227303>

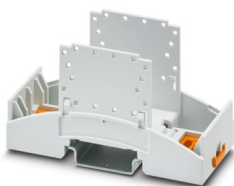


## Mandatory accessories

### BC 35,6 UT HBUS KMGY - Mounting base housing

1227343

<https://www.phoenixcontact.com/in/products/1227343>



DIN rail housing for use in distribution boards in accordance with DIN 43880, Lower housing part with base latch, width: 35.6 mm, height: 89.7 mm, depth: 48.9 mm, color: light gray (similar RAL 7035), cross connection: DIN rail connector (optional), number of positions cross connector: 16

---

### BC 35,6 UT HBUS FS BK VPE240 - Mounting base housing

1464719

<https://www.phoenixcontact.com/in/products/1464719>



DIN rail housing for use in distribution boards in accordance with DIN 43880, Lower housing part with base latch, width: 35.6 mm, height: 89.7 mm, depth: 48.9 mm, color: black (similar RAL 9005), cross connection: DIN rail connector (optional), number of positions cross connector: 16, with mounted base latch



## BC 35,6 OT U22 BK - Upper housing part

1227303

<https://www.phoenixcontact.com/in/products/1227303>



## BC 35,6 UT HBUS BK - Mounting base housing

2896254

<https://www.phoenixcontact.com/in/products/2896254>



DIN rail housing for use in distribution boards in accordance with DIN 43880, Lower housing part with base latch, width: 35.6 mm, height: 89.7 mm, depth: 48.9 mm, color: black (similar RAL 9005), cross connection: DIN rail connector (optional), number of positions cross connector: 16

---

## BC 35,6 DKL R BK - Housing cover

2200776

<https://www.phoenixcontact.com/in/products/2200776>



DIN rail housing for use in distribution boards in accordance with DIN 43880, Latching cover (non-detachable), width: 35.6 mm, height: 45 mm, depth: 8 mm, color: black (similar RAL 9005)

## BC 35,6 OT U22 BK - Upper housing part

1227303

<https://www.phoenixcontact.com/in/products/1227303>



## BC 35,6 DKL S TRANS - Housing cover

2896115

<https://www.phoenixcontact.com/in/products/2896115>



DIN rail housing for use in distribution boards in accordance with DIN 43880, transparent hinged cover, can be sealed, including insertion plate, width: 35.6 mm, height: 45 mm, depth: 8 mm, color: light gray (similar RAL 7035)

---

## BC 35,6 DKL R KMGY - Housing cover

2896157

<https://www.phoenixcontact.com/in/products/2896157>



DIN rail housing for use in distribution boards in accordance with DIN 43880, Latching cover (non-detachable), width: 35.6 mm, height: 45 mm, depth: 8 mm, color: light gray (similar RAL 7035)

# BC 35,6 OT U22 BK - Upper housing part

1227303

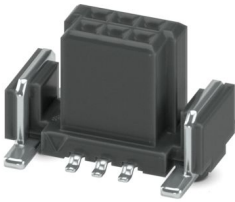
<https://www.phoenixcontact.com/in/products/1227303>



## FR 1,27/ 6-FV 6,25 - SMD female connectors

1374026

<https://www.phoenixcontact.com/in/products/1374026>



SMD female connector, nominal current: 2.2 A, test voltage: 840 V AC, number of positions: 6, pitch: 1.27 mm, color: black, contact surface: Au, contact connection type: Socket, mounting: SMD soldering

---

## FR 1,27/ 16-FV 6,25 - SMD female connectors

1374028

<https://www.phoenixcontact.com/in/products/1374028>



SMD female connector, nominal current: 2.2 A, test voltage: 840 V AC, number of positions: 16, pitch: 1.27 mm, color: black, contact surface: Au, contact connection type: Socket, mounting: SMD soldering

# BC 35,6 OT U22 BK - Upper housing part



1227303

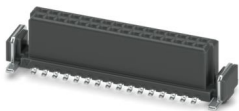
<https://www.phoenixcontact.com/in/products/1227303>

## FR 1,27/ 32-FV 6,25 - SMD female connectors

1374031

<https://www.phoenixcontact.com/in/products/1374031>

SMD female connector, nominal current: 2.2 A, test voltage: 840 V AC, number of positions: 32, pitch: 1.27 mm, color: black, contact surface: Au, contact connection type: Socket, mounting: SMD soldering



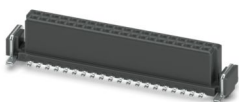
---

## FR 1,27/ 40-FV 6,25 - SMD female connectors

1374032

<https://www.phoenixcontact.com/in/products/1374032>

SMD female connector, nominal current: 2.2 A, test voltage: 840 V AC, number of positions: 40, pitch: 1.27 mm, color: black, contact surface: Au, contact connection type: Socket, mounting: SMD soldering



# BC 35,6 OT U22 BK - Upper housing part

1227303

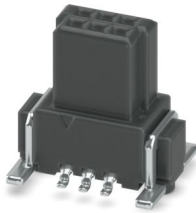
<https://www.phoenixcontact.com/in/products/1227303>



## FR 1,27/ 6-FV 9,05 - SMD female connectors

1374872

<https://www.phoenixcontact.com/in/products/1374872>



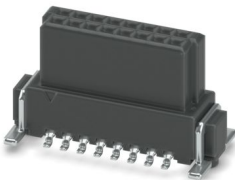
SMD female connector, nominal current: 2.1 A, test voltage: 840 V AC, number of positions: 6, pitch: 1.27 mm, color: black, contact surface: Au, contact connection type: Socket, mounting: SMD soldering

---

## FR 1,27/ 16-FV 9,05 - SMD female connectors

1374874

<https://www.phoenixcontact.com/in/products/1374874>



SMD female connector, nominal current: 2.1 A, test voltage: 840 V AC, number of positions: 16, pitch: 1.27 mm, color: black, contact surface: Au, contact connection type: Socket, mounting: SMD soldering

# BC 35,6 OT U22 BK - Upper housing part

1227303

<https://www.phoenixcontact.com/in/products/1227303>



## FR 1,27/ 32-FV 9,05 - SMD female connectors

1374879

<https://www.phoenixcontact.com/in/products/1374879>

SMD female connector, nominal current: 2.1 A, test voltage: 840 V AC, number of positions: 32, pitch: 1.27 mm, color: black, contact surface: Au, contact connection type: Socket, mounting: SMD soldering



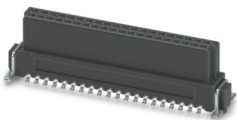
---

## FR 1,27/ 40-FV 9,05 - SMD female connectors

1374880

<https://www.phoenixcontact.com/in/products/1374880>

SMD female connector, nominal current: 2.1 A, test voltage: 840 V AC, number of positions: 40, pitch: 1.27 mm, color: black, contact surface: Au, contact connection type: Socket, mounting: SMD soldering



# BC 35,6 OT U22 BK - Upper housing part

1227303

<https://www.phoenixcontact.com/in/products/1227303>



## FR 1,27/ 6-MV 1,75 - SMD male connectors

1373826

<https://www.phoenixcontact.com/in/products/1373826>



SMD male connector, nominal current: 2.2 A, test voltage: 840 V AC, number of positions: 6, pitch: 1.27 mm, color: black, contact surface: Au, contact connection type: Pin, mounting: SMD soldering

---

## FR 1,27/ 16-MV 1,75 - SMD male connectors

1373828

<https://www.phoenixcontact.com/in/products/1373828>



SMD male connector, nominal current: 2.2 A, test voltage: 840 V AC, number of positions: 16, pitch: 1.27 mm, color: black, contact surface: Au, contact connection type: Pin, mounting: SMD soldering

# BC 35,6 OT U22 BK - Upper housing part



1227303

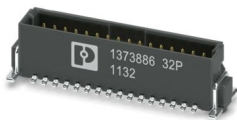
<https://www.phoenixcontact.com/in/products/1227303>

## FR 1,27/ 32-MV 1,75 - SMD male connectors

1373886

<https://www.phoenixcontact.com/in/products/1373886>

SMD male connector, nominal current: 2.2 A, test voltage: 840 V AC, number of positions: 32, pitch: 1.27 mm, color: black, contact surface: Au, contact connection type: Pin, mounting: SMD soldering



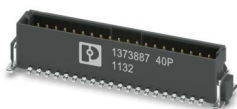
---

## FR 1,27/ 40-MV 1,75 - SMD male connectors

1373887

<https://www.phoenixcontact.com/in/products/1373887>

SMD male connector, nominal current: 2.2 A, test voltage: 840 V AC, number of positions: 40, pitch: 1.27 mm, color: black, contact surface: Au, contact connection type: Pin, mounting: SMD soldering





# BC 35,6 OT U22 BK - Upper housing part

1227303

<https://www.phoenixcontact.com/in/products/1227303>



## FR 1,27/ 6-MV 3,25 - SMD male connectors

1337137

<https://www.phoenixcontact.com/in/products/1337137>



SMD male connector, nominal current: 2.2 A, test voltage: 840 V AC, number of positions: 6, pitch: 1.27 mm, color: black, contact surface: Au, contact connection type: Pin, mounting: SMD soldering

---

## FR 1,27/ 16-MV 3,25 - SMD male connectors

1337139

<https://www.phoenixcontact.com/in/products/1337139>



SMD male connector, nominal current: 2.2 A, test voltage: 840 V AC, number of positions: 16, pitch: 1.27 mm, color: black, contact surface: Au, contact connection type: Pin, mounting: SMD soldering

# BC 35,6 OT U22 BK - Upper housing part

1227303

<https://www.phoenixcontact.com/in/products/1227303>

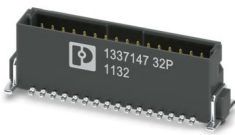


## FR 1,27/ 32-MV 3,25 - SMD male connectors

1337147

<https://www.phoenixcontact.com/in/products/1337147>

SMD male connector, nominal current: 2.2 A, test voltage: 840 V AC, number of positions: 32, pitch: 1.27 mm, color: black, contact surface: Au, contact connection type: Pin, mounting: SMD soldering



---

## FR 1,27/ 40-MV 3,25 - SMD male connectors

1337142

<https://www.phoenixcontact.com/in/products/1337142>

SMD male connector, nominal current: 2.2 A, test voltage: 840 V AC, number of positions: 40, pitch: 1.27 mm, color: black, contact surface: Au, contact connection type: Pin, mounting: SMD soldering



# BC 35,6 OT U22 BK - Upper housing part

1227303

<https://www.phoenixcontact.com/in/products/1227303>



## CUC-SP-J1ST-S/R4LT-SMD - RJ45 PCB connector

1149611

<https://www.phoenixcontact.com/in/products/1149611>



RJ45 PCB connector, design: RJ45, degree of protection: IP20, number of positions: 8, 10 Gbps, material: Metal, connection method: SMD reflow

---

## CUC-SP-J1ST-A/R4LT-SMD - RJ45 PCB connector

1149882

<https://www.phoenixcontact.com/in/products/1149882>



RJ45 PCB connector, design: RJ45, degree of protection: IP20, number of positions: 8, 10 Gbps, material: Metal, connection method: SMD reflow

# BC 35,6 OT U22 BK - Upper housing part

1227303

<https://www.phoenixcontact.com/in/products/1227303>



## CUC-SP-J1ST-AR4LT-SMD-LED - RJ45 PCB connector

1149873

<https://www.phoenixcontact.com/in/products/1149873>



RJ45 PCB connector, design: RJ45, degree of protection: IP20, number of positions: 8, 10 Gbps, material: Metal, connection method: SMD reflow

---

## CUC-SP-J1ST-AR4LB-SMD - RJ45 PCB connector

1149874

<https://www.phoenixcontact.com/in/products/1149874>



RJ45 PCB connector, degree of protection: IP20, number of positions: 8, 10 Gbps, material: Metal, connection method: SMD reflow

# BC 35,6 OT U22 BK - Upper housing part

1227303

<https://www.phoenixcontact.com/in/products/1227303>



## CUC-SP-J1ST-S/R4LT - RJ45 PCB connector

1149872

<https://www.phoenixcontact.com/in/products/1149872>



RJ45 PCB connector, degree of protection: IP20, number of positions: 8, 10  
Gbps, material: Metal, connection method: THT wave

---

## CUC-SP-J1ST-S/R4LT-LED - RJ45 PCB connector

1149871

<https://www.phoenixcontact.com/in/products/1149871>



RJ45 PCB connector, degree of protection: IP20, number of positions: 8, 10  
Gbps, material: Metal, connection method: THT wave

# BC 35,6 OT U22 BK - Upper housing part

1227303

<https://www.phoenixcontact.com/in/products/1227303>



## CUC-SP-J1ST-AR4LT - RJ45 PCB connector

1149870

<https://www.phoenixcontact.com/in/products/1149870>



RJ45 PCB connector, design: RJ45, degree of protection: IP20, number of positions: 8, 10 Gbps, material: Metal, connection method: THT wave

---

## CUC-SP-J1ST-AR4LT-LED - RJ45 PCB connector

1149867

<https://www.phoenixcontact.com/in/products/1149867>



RJ45 PCB connector, design: RJ45, degree of protection: IP20, number of positions: 8, 10 Gbps, material: Metal, connection method: THT wave

# BC 35,6 OT U22 BK - Upper housing part

1227303

<https://www.phoenixcontact.com/in/products/1227303>



## CUC-SP-J1ST-AR4LB - RJ45 PCB connector

1149868

<https://www.phoenixcontact.com/in/products/1149868>



RJ45 PCB connector, degree of protection: IP20, number of positions: 8, 10  
Gbps, material: Metal, connection method: THT wave

---

## CUC-SP-J1ST-AR4LB-LED - RJ45 PCB connector

1149866

<https://www.phoenixcontact.com/in/products/1149866>



RJ45 PCB connector, degree of protection: IP20, number of positions: 8, 10  
Gbps, material: Metal, connection method: THT wave

# BC 35,6 OT U22 BK - Upper housing part

1227303

<https://www.phoenixcontact.com/in/products/1227303>



## CUC-SP-J1ST-S/R4LT-THR - RJ45 PCB connector

1337238

<https://www.phoenixcontact.com/in/products/1337238>



RJ45 PCB connector, degree of protection: IP20, number of positions: 8, 10 Gbps, material: Metal, connection method: THR reflow/THT wave

---

## CUC-SP-J1ST-S/R4LT-THR-LED - RJ45 PCB connector

1337239

<https://www.phoenixcontact.com/in/products/1337239>



RJ45 PCB connector, degree of protection: IP20, number of positions: 8, 10 Gbps, material: Metal, connection method: THR reflow/THT wave



# BC 35,6 OT U22 BK - Upper housing part

1227303

<https://www.phoenixcontact.com/in/products/1227303>



## CUC-SP-J1ST-A/R4LT-THR - RJ45 PCB connector

1337240

<https://www.phoenixcontact.com/in/products/1337240>



RJ45 PCB connector, degree of protection: IP20, number of positions: 8, 10 Gbps, material: Metal, connection method: THR reflow/THT wave

---

## CUC-SP-J1ST-A/R4LT-THR-LED - RJ45 PCB connector

1337243

<https://www.phoenixcontact.com/in/products/1337243>



RJ45 PCB connector, degree of protection: IP20, number of positions: 8, 10 Gbps, material: Metal, connection method: THR reflow/THT wave, cable outlet: straight

## BC 35,6 OT U22 BK - Upper housing part

1227303

<https://www.phoenixcontact.com/in/products/1227303>



### CUC-COX-J1M-A/KFS - Coaxial PCB connector

1340151

<https://www.phoenixcontact.com/in/products/1340151>



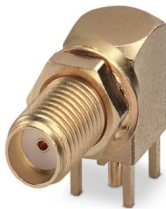
Coaxial PCB connector, degree of protection: IP20, number of positions: 1, 12 Gbps, material: Metal, connection method: Solder connection, cable outlet: straight, for additional information, see the product range drawing in the Download Center

---

### CUC-COX-J1M-A/KBS - Coaxial PCB connector

1340153

<https://www.phoenixcontact.com/in/products/1340153>



Coaxial PCB connector, degree of protection: IP20, number of positions: 1, 12 Gbps, material: Metal, connection method: Solder connection, cable outlet: straight, for additional information, see the product range drawing in the Download Center

# BC 35,6 OT U22 BK - Upper housing part

1227303

<https://www.phoenixcontact.com/in/products/1227303>



## CUC-COX-J1M-A/LFS - Coaxial PCB connector

1340150

<https://www.phoenixcontact.com/in/products/1340150>



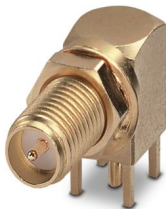
Coaxial PCB connector, degree of protection: IP20, number of positions: 1, 12 Gbps, material: Metal, connection method: Solder connection, cable outlet: straight

---

## CUC-COX-J1M-A/LBS - Coaxial PCB connector

1340152

<https://www.phoenixcontact.com/in/products/1340152>



Coaxial PCB connector, degree of protection: IP20, number of positions: 1, 12 Gbps, material: Metal, connection method: Solder connection, cable outlet: straight

# BC 35,6 OT U22 BK - Upper housing part

1227303

<https://www.phoenixcontact.com/in/products/1227303>



## FP 0,8/ 12-MV-SH 1,15 - SMD male connector, shielded

1043786

<https://www.phoenixcontact.com/in/products/1043786>



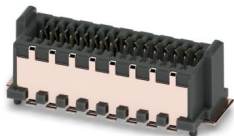
shielded SMD male connector, nominal current: 1.7 A, test voltage: 500 V AC, number of positions: 12, pitch: 0.8 mm, color: black, contact surface: Au, contact connection type: Pin, mounting: SMD soldering

---

## FP 0,8/ 32-MV-SH 1,15 - SMD male connector, shielded

1043787

<https://www.phoenixcontact.com/in/products/1043787>



shielded SMD male connector, nominal current: 1.7 A, test voltage: 500 V AC, number of positions: 32, pitch: 0.8 mm, color: black, contact surface: Au, contact connection type: Pin, mounting: SMD soldering

# BC 35,6 OT U22 BK - Upper housing part

1227303

<https://www.phoenixcontact.com/in/products/1227303>

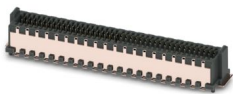


## FP 0,8/ 80-MV-SH 1,15 - SMD male connector, shielded

1043790

<https://www.phoenixcontact.com/in/products/1043790>

shielded SMD male connector, nominal current: 1.7 A, test voltage: 500 V AC, number of positions: 80, pitch: 0.8 mm, color: black, contact surface: Au, contact connection type: Pin, mounting: SMD soldering



---

## FP 0,8/ 12-MV-SH 2,65 - SMD male connector, shielded

1043731

<https://www.phoenixcontact.com/in/products/1043731>

shielded SMD male connector, nominal current: 1.7 A, test voltage: 500 V AC, number of positions: 12, pitch: 0.8 mm, color: black, contact surface: Au, contact connection type: Pin, mounting: SMD soldering



## BC 35,6 OT U22 BK - Upper housing part

1227303

<https://www.phoenixcontact.com/in/products/1227303>

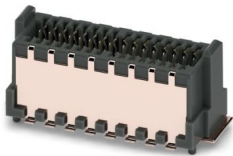


### FP 0,8/ 32-MV-SH 2,65 - SMD male connector, shielded

1043733

<https://www.phoenixcontact.com/in/products/1043733>

shielded SMD male connector, nominal current: 1.7 A, test voltage: 500 V AC, number of positions: 32, pitch: 0.8 mm, color: black, contact surface: Au, contact connection type: Pin, mounting: SMD soldering



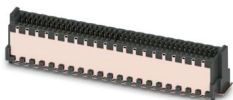
---

### FP 0,8/ 80-MV-SH 2,65 - SMD male connector, shielded

1043757

<https://www.phoenixcontact.com/in/products/1043757>

shielded SMD male connector, nominal current: 1.7 A, test voltage: 500 V AC, number of positions: 80, pitch: 0.8 mm, color: black, contact surface: Au, contact connection type: Pin, mounting: SMD soldering



# BC 35,6 OT U22 BK - Upper housing part

1227303

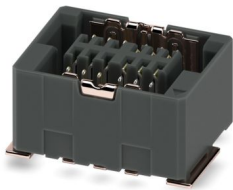
<https://www.phoenixcontact.com/in/products/1227303>



## FP 0,8/ 12-FV-SH 4,85 - SMD female connector shielded

1043710

<https://www.phoenixcontact.com/in/products/1043710>



Shielded SMD female connector, nominal current: 1.7 A, test voltage: 500 V AC, number of positions: 12, pitch: 0.8 mm, color: black, contact surface: Au, contact connection type: Socket, mounting: SMD soldering

---

## FP 0,8/ 32-FV-SH 4,85 - SMD female connector shielded

1043711

<https://www.phoenixcontact.com/in/products/1043711>



Shielded SMD female connector, nominal current: 1.7 A, test voltage: 500 V AC, number of positions: 32, pitch: 0.8 mm, color: black, contact surface: Au, contact connection type: Socket, mounting: SMD soldering

## BC 35,6 OT U22 BK - Upper housing part

1227303

<https://www.phoenixcontact.com/in/products/1227303>



### FP 0,8/ 80-FV-SH 4,85 - SMD female connector shielded

1043714

<https://www.phoenixcontact.com/in/products/1043714>

Shielded SMD female connector, nominal current: 1.7 A, test voltage: 500 V AC, number of positions: 80, pitch: 0.8 mm, color: black, contact surface: Au, contact connection type: Socket, mounting: SMD soldering



---

### FP 0,8/ 12-FV-SH 7,85 - SMD female connector shielded

1043682

<https://www.phoenixcontact.com/in/products/1043682>

Shielded SMD female connector, nominal current: 1.7 A, test voltage: 500 V AC, number of positions: 12, pitch: 0.8 mm, color: black, contact surface: Au, contact connection type: Socket, mounting: SMD soldering





## BC 35,6 OT U22 BK - Upper housing part

1227303

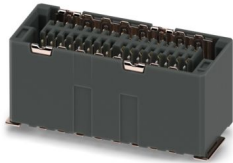
<https://www.phoenixcontact.com/in/products/1227303>



### FP 0,8/ 32-FV-SH 7,85 - SMD female connector shielded

1043683

<https://www.phoenixcontact.com/in/products/1043683>



Shielded SMD female connector, nominal current: 1.7 A, test voltage: 500 V AC, number of positions: 32, pitch: 0.8 mm, color: black, contact surface: Au, contact connection type: Socket, mounting: SMD soldering

---

### FP 0,8/ 80-FV-SH 7,85 - SMD female connector shielded

1043685

<https://www.phoenixcontact.com/in/products/1043685>



Shielded SMD female connector, nominal current: 1.7 A, test voltage: 500 V AC, number of positions: 80, pitch: 0.8 mm, color: black, contact surface: Au, contact connection type: Socket, mounting: SMD soldering

# BC 35,6 OT U22 BK - Upper housing part

1227303

<https://www.phoenixcontact.com/in/products/1227303>



## CUC-USB2.0-J1ST-AV/UAF-THT - USB PCB connectors

1332630

<https://www.phoenixcontact.com/in/products/1332630>



USB PCB connectors, degree of protection: IP20, number of positions: 4, 480 Mbps, material: Metal, connection method: Solder connection

---

## CUC-USB2.0-J1ST-AH/UAF-THT - USB PCB connectors

1332631

<https://www.phoenixcontact.com/in/products/1332631>



USB PCB connectors, degree of protection: IP20, number of positions: 4, 480 Mbps, material: Metal, connection method: Solder connection, USB 2.0

# BC 35,6 OT U22 BK - Upper housing part

1227303

<https://www.phoenixcontact.com/in/products/1227303>



## CUC-USB2.0-J1ST-S/UAF-THT - USB PCB connectors

1332632

<https://www.phoenixcontact.com/in/products/1332632>



USB PCB connectors, degree of protection: IP20, number of positions: 4, 480 Mbps, material: Metal, connection method: Solder connection, USB 2.0

---

## CUC-USB2.0-J1ST-AH/UAF-SMD - USB PCB connectors

1332634

<https://www.phoenixcontact.com/in/products/1332634>



USB PCB connectors, degree of protection: IP20, number of positions: 4, 480 Mbps, material: Metal, connection method: Solder connection, USB 2.0

# BC 35,6 OT U22 BK - Upper housing part

1227303

<https://www.phoenixcontact.com/in/products/1227303>



## CUC-USB3.0-J1ST-AH/UAF-THT - USB PCB connectors

1332637

<https://www.phoenixcontact.com/in/products/1332637>



USB PCB connectors, degree of protection: IP20, number of positions: 9, 5  
Gbps, material: Metal, connection method: Solder connection, USB 3.0

---

## CUC-USB3.0-J1ST-S/UAF-THT - USB PCB connectors

1332638

<https://www.phoenixcontact.com/in/products/1332638>



USB PCB connectors, degree of protection: IP20, number of positions: 9, 5  
Gbps, material: Metal, connection method: Solder connection, USB 3.0

# BC 35,6 OT U22 BK - Upper housing part

1227303

<https://www.phoenixcontact.com/in/products/1227303>



## CUC-USB3.0-J1ST-AV/UAF-THT - USB PCB connectors

1332636

<https://www.phoenixcontact.com/in/products/1332636>



USB PCB connectors, degree of protection: IP20, number of positions: 9, 5 Gbps, material: Metal, connection method: Solder connection, USB 3.0

---

## CUC-USB3.0-J1ST-S/UAF-THR - USB PCB connectors

1430989

<https://www.phoenixcontact.com/in/products/1430989>



USB PCB connectors, degree of protection: IP20, number of positions: 9, 5 Gbps, material: Nickel-plated brass, connection method: Solder connection, USB 3.0

## BC 35,6 OT U22 BK - Upper housing part

1227303

<https://www.phoenixcontact.com/in/products/1227303>



### CUC-USB3.1-J1ST-AH/UCF-SMD - USB PCB connectors

1332645

<https://www.phoenixcontact.com/in/products/1332645>



USB PCB connectors, degree of protection: IP20, number of positions: 16, 480 Mbps, material: Metal, connection method: Solder connection, USB 2.0

---

### CUC-USB3.1-J1ST-S/UCF-SMD - USB PCB connectors

1332646

<https://www.phoenixcontact.com/in/products/1332646>



USB PCB connectors, degree of protection: IP20, number of positions: 24, 10 Gbps, material: Metal, connection method: Solder connection

## BC 35,6 OT U22 BK - Upper housing part

1227303

<https://www.phoenixcontact.com/in/products/1227303>



## CUC-USB3.1-J1ST-AH/UCF-SMD/THR - USB PCB connectors

1332643

<https://www.phoenixcontact.com/in/products/1332643>



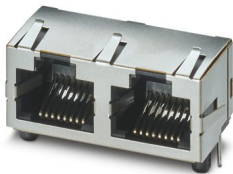
USB PCB connectors, degree of protection: IP20, number of positions: 24, 10 Gbps, material: Metal, connection method: Solder connection, USB 3.0

---

## CUC-MP-J1ST-A/2R4LT - RJ45 PCB connector

1149858

<https://www.phoenixcontact.com/in/products/1149858>



RJ45 PCB connector, degree of protection: IP20, number of positions: 8, 10 Gbps, material: Metal, connection method: THT wave

# BC 35,6 OT U22 BK - Upper housing part

1227303

<https://www.phoenixcontact.com/in/products/1227303>



## SPE-T1-STSM-180 - SPE PCB connector

1163798

<https://www.phoenixcontact.com/in/products/1163798>



SPE PCB connector, design: IEC 63171-2, degree of protection: IP20, number of positions: 2, 1 Gbps, CAT B (ISO/IEC 63171), material: Metal, connection method: THR solder connection, cable outlet: straight, Single Pair Ethernet

---

## SPE-T1-STRM-90 - SPE PCB connector

1163797

<https://www.phoenixcontact.com/in/products/1163797>



SPE PCB connector, design: IEC 63171-2, degree of protection: IP20, number of positions: 2, 1 Gbps, CAT B (ISO/IEC 63171), material: Metal, connection method: THR solder connection, cable outlet: straight, Single Pair Ethernet



# BC 35,6 OT U22 BK - Upper housing part

1227303

<https://www.phoenixcontact.com/in/products/1227303>



## SPE-T1-STRM-90-LED - SPE PCB connector

1215778

<https://www.phoenixcontact.com/in/products/1215778>



SPE PCB connector, design: IEC 63171-2, degree of protection: IP20, number of positions: 2, 1 Gbps, CAT B (ISO/IEC 63171), material: Plastic, connection method: THR solder connection, cable outlet: straight, Single Pair Ethernet

---

## SPE-T1-M8MSM-180-SMD - SPE PCB connector

1215777

<https://www.phoenixcontact.com/in/products/1215777>



SPE PCB connector, design: IEC 63171-5, degree of protection: IP20, number of positions: 2, CAT B (ISO/IEC 63171), material: Plastic, connection method: SMD, Single Pair Ethernet

# BC 35,6 OT U22 BK - Upper housing part

1227303

<https://www.phoenixcontact.com/in/products/1227303>



## SPE-T1-M8MSM-180 - SPE PCB connector

1163793

<https://www.phoenixcontact.com/in/products/1163793>



SPE PCB connector, design: IEC 63171-5, degree of protection: IP20, number of positions: 2, 10 Gbps, CAT B (ISO/IEC 63171), material: Plastic, connection method: THR solder connection, Single Pair Ethernet

---

## SPE-T1-M8MRM-90 - SPE PCB connector

1163795

<https://www.phoenixcontact.com/in/products/1163795>



SPE PCB connector, design: IEC 63171-5, degree of protection: IP65/IP67, number of positions: 2, CAT B (ISO/IEC 63171), material: Metal, connection method: THR solder connection, Single Pair Ethernet

## BC 35,6 OT U22 BK - Upper housing part

1227303

<https://www.phoenixcontact.com/in/products/1227303>



## HBUS8 35,6-8P-1S BK - DIN rail bus connectors

1249063

<https://www.phoenixcontact.com/in/products/1249063>



DIN rail connector, color: black, nominal current: 3 A (per contact), rated voltage (III/2): 100 V, number of potentials: 8, number of positions: 8, product range: BC 35,6..., pitch: 2.54 mm, mounting: DIN rail mounting, locking: without

---

## HBUS 35,6-16P-2S BK - DIN rail bus connectors

2896319

<https://www.phoenixcontact.com/in/products/2896319>



DIN rail connector, color: black, nominal current: 3 A (Total current of 25 A max.), rated voltage (III/2): 30 V, number of positions: 16, product range: BC 35,6..., pitch: 2.54 mm, mounting: DIN rail mounting, locking: without

## BC 35,6 OT U22 BK - Upper housing part

1227303

<https://www.phoenixcontact.com/in/products/1227303>



## HBUS 35,6-16P-1S BK - DIN rail bus connectors

2896283

<https://www.phoenixcontact.com/in/products/2896283>



DIN rail connector, color: black, nominal current: 3 A (Total current of 25 A max.), rated voltage (III/2): 30 V, number of positions: 16, product range: BC 35,6..., pitch: 2.54 mm, mounting: DIN rail mounting, locking: without

---

## HBUS8-B SET BK - Protective cap

1252176

<https://www.phoenixcontact.com/in/products/1252176>



Set of 3 caps, for protecting unused DIN rail bus connectors, simply snap on to fit

# BC 35,6 OT U22 BK - Upper housing part

1227303

<https://www.phoenixcontact.com/in/products/1227303>



## HBUS-B SET BK - Protective cap

2278173

<https://www.phoenixcontact.com/in/products/2278173>



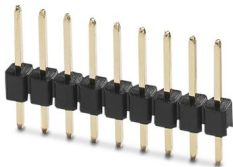
Set of 3 caps, for protecting unused DIN rail bus connectors, simply snap on to fit

---

## PSTD 0,65X0,65/9-1-2,54 - Pin strip

1252180

<https://www.phoenixcontact.com/in/products/1252180>



Pin strip, color: black, nominal current: 3 A (per contact), rated voltage (III/2): 100 V, contact connection type: Pin, number of potentials: 9, number of rows: 1, number of positions: 9, number of connections: 9, product range: PSTD 0,65X0,65/...-1-V, pitch: 2.54 mm, mounting: THR soldering, pin layout: Linear pinning, solder pin [P]: 6.3 mm, locking: without, type of packaging: packed in cardboard

# BC 35,6 OT U22 BK - Upper housing part

1227303

<https://www.phoenixcontact.com/in/products/1227303>



## PSTD 0,65X0,65/9-2,54 - Pin strip

2200700

<https://www.phoenixcontact.com/in/products/2200700>



Pin strip, color: black, contact connection type: Pin, number of potentials: 18, number of rows: 2, number of positions: 18, number of connections: 18, product range: PSTD 0,65X0,65/...-V, pitch: 2.54 mm, mounting: THR soldering, pin layout: Linear pinning, solder pin [P]: 2.5 mm, locking: without, type of packaging: packed in cardboard

---

## PSTD 0,65X0,65/9-3IS-2,54 - Pin strip

1252178

<https://www.phoenixcontact.com/in/products/1252178>



Pin strip, color: black, nominal current: 3 A (per contact), rated voltage (III/2): 100 V, contact connection type: Pin, number of potentials: 9, number of rows: 1, number of positions: 9, number of connections: 9, pitch: 2.54 mm, mounting: THR soldering, pin layout: Linear pinning, solder pin [P]: 2.5 mm, locking: without, type of packaging: packed in cardboard

## BC 35,6 OT U22 BK - Upper housing part

1227303

<https://www.phoenixcontact.com/in/products/1227303>



## PSTD 0,65X0,65/18-3IS-2,54 - Pin strip

2202993

<https://www.phoenixcontact.com/in/products/2202993>



Pin strip for connecting an additional PCB or PCB with hole pattern to the HBUS

---

## FUSSRIEGEL 14,4 L30 SPERR OG - Base latch

2896998

<https://www.phoenixcontact.com/in/products/2896998>



DIN rail housing for use in distribution boards in accordance with DIN 43880, Base latch, width: 14.4 mm, height: 29.8 mm, depth: 5.9 mm, color: orange (similar RAL 2003)

## BC 35,6 OT U22 BK - Upper housing part

1227303

<https://www.phoenixcontact.com/in/products/1227303>



## BC 35,6 PLATE KMGY - Insertion plate

2200712

<https://www.phoenixcontact.com/in/products/2200712>

DIN rail housing for use in distribution boards in accordance with DIN 43880, Insertion plate, width: 32.3 mm, height: 41.75 mm, depth: 1.5 mm, color: light gray (similar RAL 7035)



---

## Accessories

### HS LC-V-D3/ R2XC1-5,08 - Fiber optic

2202311

<https://www.phoenixcontact.com/in/products/2202311>



Multiple light guides, passive, rigid, Cylinder head, emission surface: planar, number of displays: 2, (2 rows, 1 column), pitch: 5.08 mm, ESD protection: <12 kV, can be used for the BC housing range (housing must be processed)



# BC 35,6 OT U22 BK - Upper housing part

1227303

<https://www.phoenixcontact.com/in/products/1227303>



## HS LC-V-D3/ R3XC1-5,08 - Fiber optic

2202312

<https://www.phoenixcontact.com/in/products/2202312>



Multiple light guides, passive, rigid, Cylinder head, emission surface: planar, number of displays: 3, (3 rows, 1 column), pitch: 5.08 mm, ESD protection: <12 kV, can be used for the BC housing range (housing must be processed)

---

Phoenix Contact 2025 © - all rights reserved

<https://www.phoenixcontact.com>

PHOENIX CONTACT (I) Pvt. Ltd.

A-58/2, Okhla Industrial Area, Phase - II, New Delhi-110 020

+91.1275.71420

[info@phoenixcontact.co.in](mailto:info@phoenixcontact.co.in)