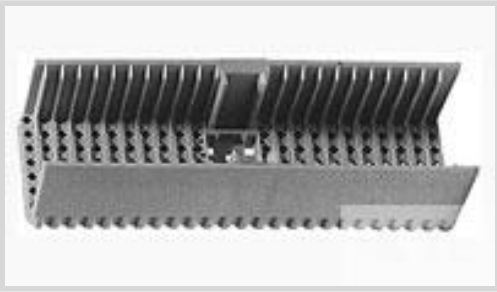




Connectors > Connector Accessories > Connector Caps & Covers



Connector Cover Type: **PCB Mount Shroud**

Primary Product Color: **Black**

Primary Product Material: **Liquid Crystal Polymer (LCP)**

Number of Positions: **72**

Operating Temperature (Max): **125 °C [257 °F]**

Features

Product Type Features

Connector Cover Type	PCB Mount Shroud
----------------------	------------------

Configuration Features

Number of Rows	12
Number of Positions	72

Body Features

Primary Product Color	Black
Primary Product Material	Liquid Crystal Polymer (LCP)

Mechanical Attachment

Mating Alignment Type	Multi-Purpose Center
Mating Alignment	With

Housing Features

Centerline (Pitch)	2 mm[.079 in]
--------------------	---------------

Dimensions

Row-to-Row Spacing	1.5 mm[.059 in]
Product Width	23.5 mm[.93 in]
Product Length	16.5 mm[.65 in]
Product Height	13.46 mm[.53 in]

Usage Conditions

--	--



Operating Temperature (Max)	125 °C[257 °F]
Operating Temperature Range	-55 – 125 °C[-67 – 257 °F]

Operation/Application

Assembly Process Feature	Board Standoff
--------------------------	----------------

Industry Standards

UL Flammability Rating	UL 94V-0
------------------------	----------

Packaging Features

Packaging Method	Package
------------------	---------

Product Compliance

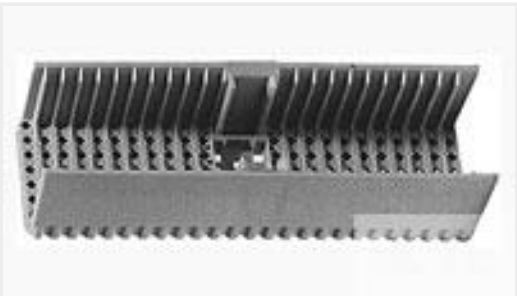
For compliance documentation, visit the product page on TE.com>

EU RoHS Directive 2011/65/EU	Compliant
EU ELV Directive 2000/53/EC	Compliant
China RoHS 2 Directive MIIT Order No 32, 2016	No Restricted Materials Above Threshold
EU REACH Regulation (EC) No. 1907/2006	Current ECHA Candidate List: JAN 2025 (247) Candidate List Declared Against: JAN 2025 (247) Does not contain REACH SVHC
Halogen Content	Not Low Halogen - contains Br or Cl > 900 ppm.
Solder Process Capability	Not applicable for solder process capability

Product Compliance Disclaimer

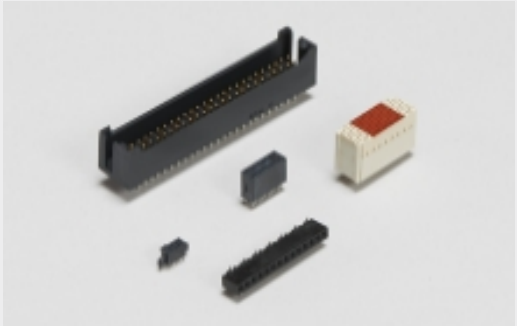
This information is provided based on reasonable inquiry of our suppliers and represents our current actual knowledge based on the information they provided. This information is subject to change. The part numbers that TE has identified as EU RoHS compliant have a maximum concentration of 0.1% by weight in homogenous materials for lead, hexavalent chromium, mercury, PBB, PBDE, DBP, BBP, DEHP, DIBP, and 0.01% for cadmium, or qualify for an exemption to these limits as defined in the Annexes of Directive 2011/65/EU (RoHS2). Finished electrical and electronic equipment products will be CE marked as required by Directive 2011/65/EU. Components may not be CE marked. Additionally, the part numbers that TE has identified as EU ELV compliant have a maximum concentration of 0.1% by weight in homogenous materials for lead, hexavalent chromium, and mercury, and 0.01% for cadmium, or qualify for an exemption to these limits as defined in the Annexes of Directive 2000/53/EC (ELV). Regarding the REACH Regulation, the information TE provides on SVHC in articles for this part number is based on the latest European Chemicals Agency (ECHA) ‘Guidance on requirements for substances in articles’ posted at this URL: <https://echa.europa.eu/guidance-documents/guidance-on-reach>

Compatible Parts



TE Part # 120645-3
2MM HM SHROUD HSG 144P 3.00 H

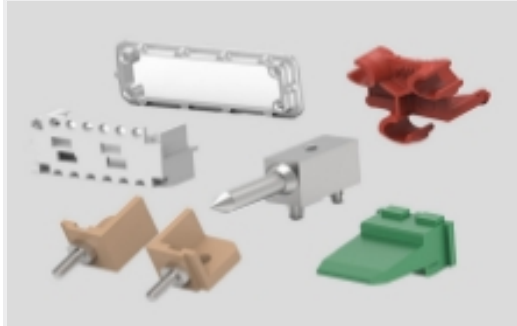
Also in the Series | Z-PACK 2mm HM



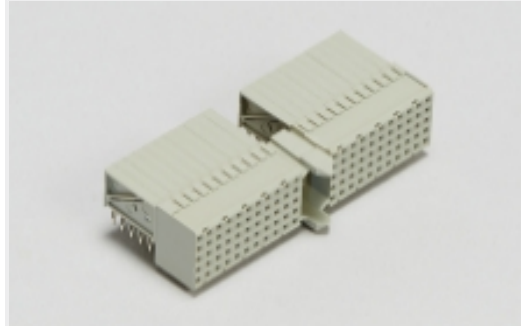
Board-to-Board Headers & Receptacles(46)



Connector Contacts(2)



Connector Hardware(91)



Hard Metric Backplane Connectors (266)



Power Contacts(2)



Rectangular Power Connectors(46)

Customers Also Bought



TE Part #100503L
CONT SOC ASSY



TE Part #5222462-1
RECEPTACLE, PRESS FIT, COML BNC

Documents

Product Drawings
2MM HM SHR/HSG RH 072P 3.00 H

English

CAD Files
3D PDF

3D



Customer View Model

[ENG_CVM_CVM_120647-3_C.2d_dxf.zip](#)

English

Customer View Model

[ENG_CVM_CVM_120647-3_C.3d_igs.zip](#)

English

Customer View Model

[ENG_CVM_CVM_120647-3_C.3d_stp.zip](#)

English

By downloading the CAD file I accept and agree to the [Terms and Conditions](#) of use.

Product Specifications

[Application Specification](#)

English

[Application Specification](#)

English