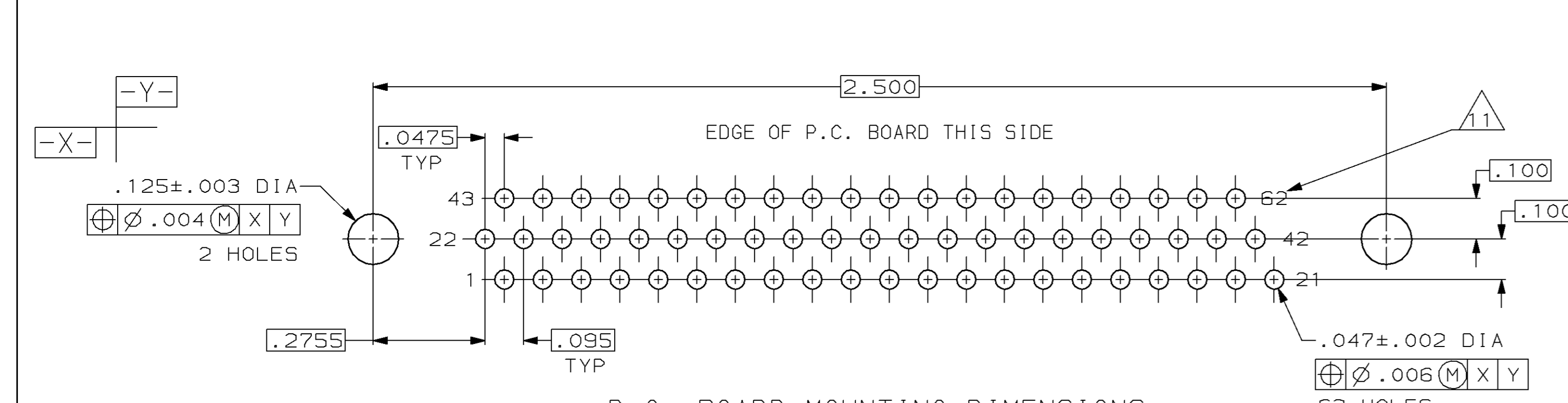
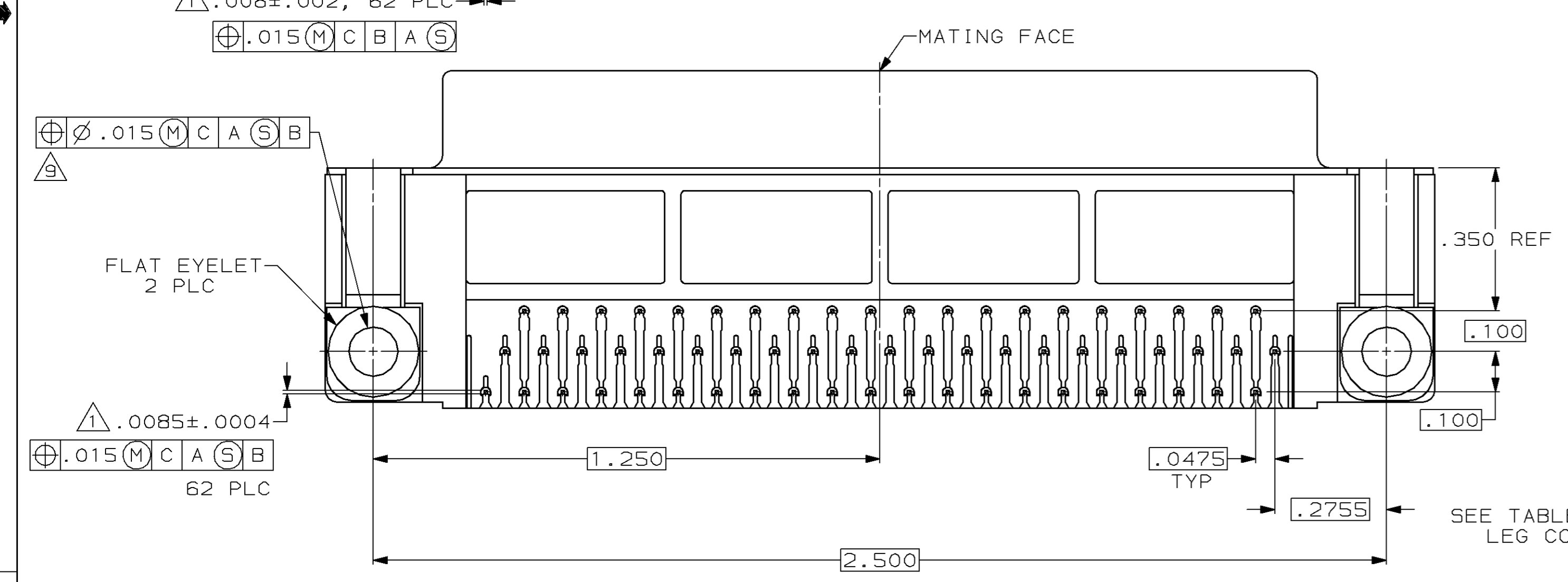
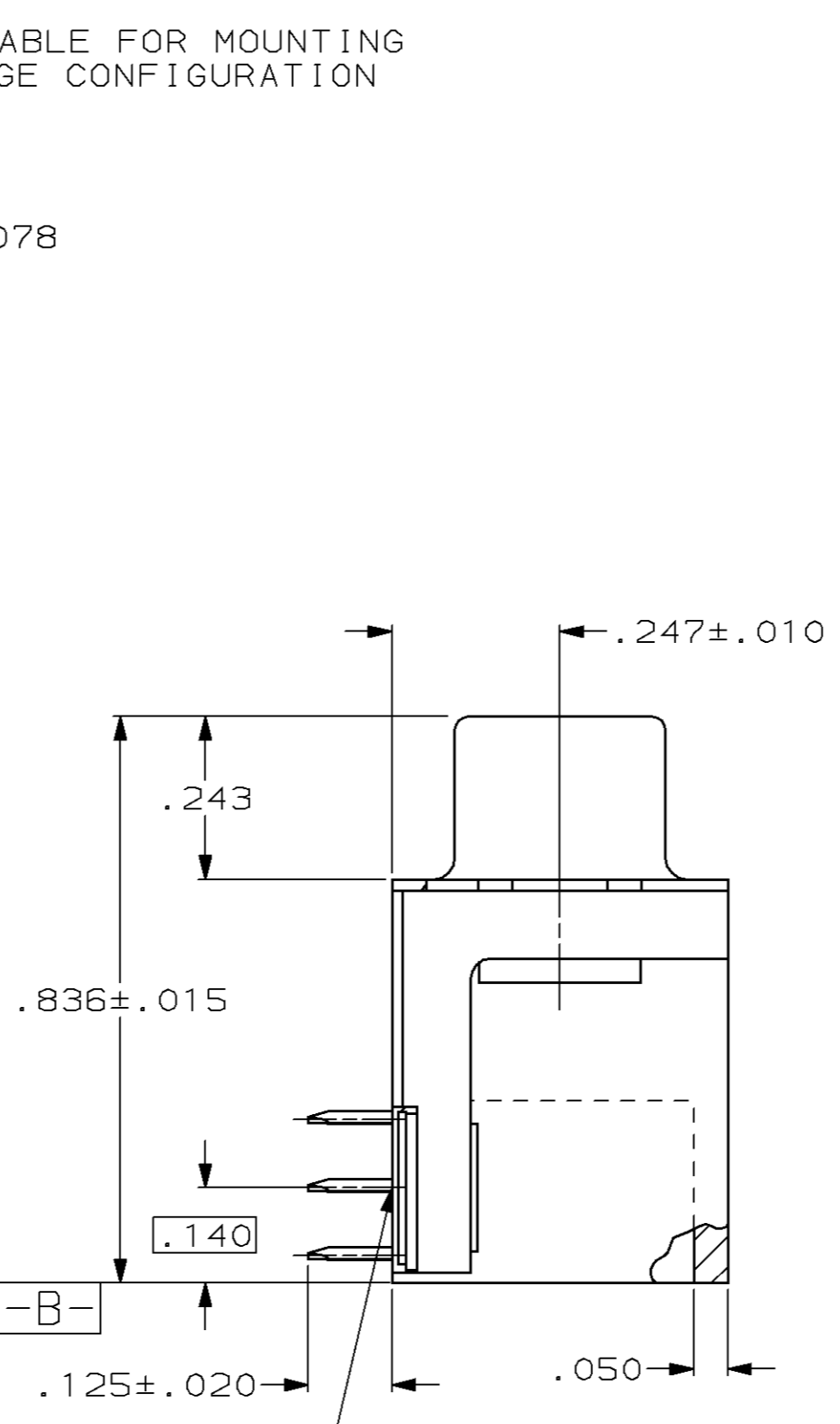
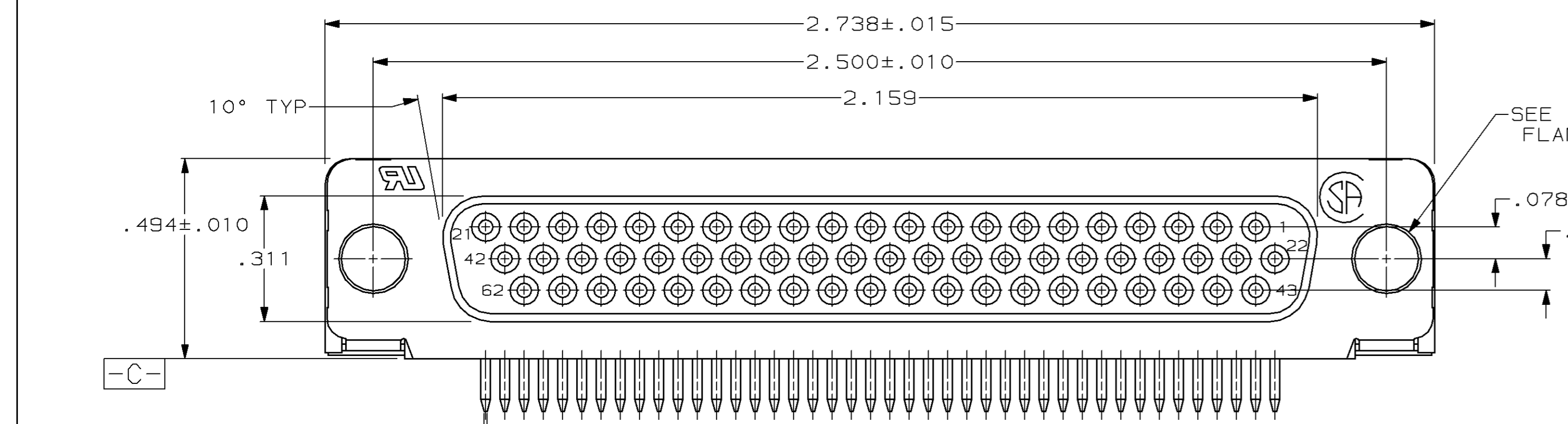
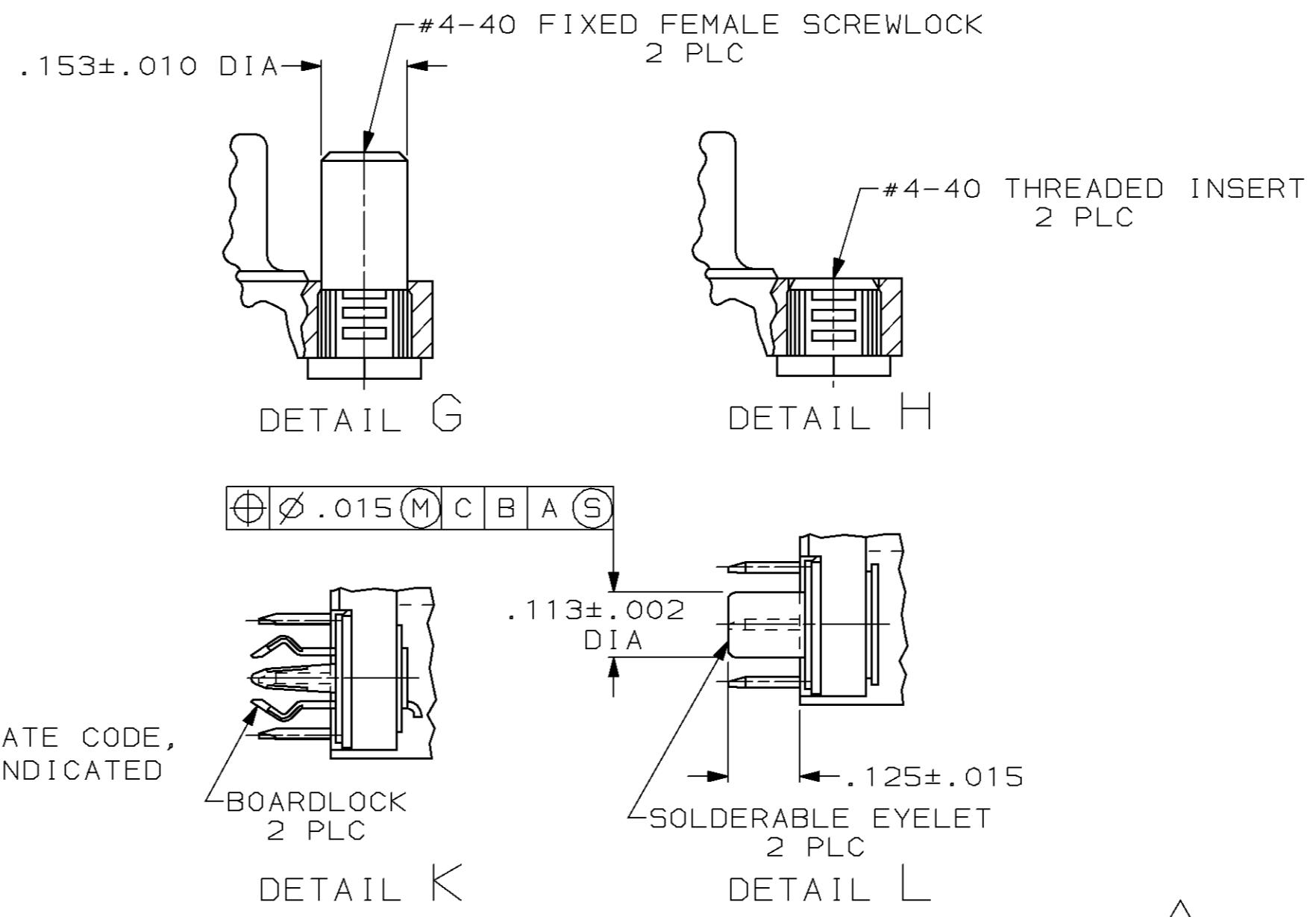
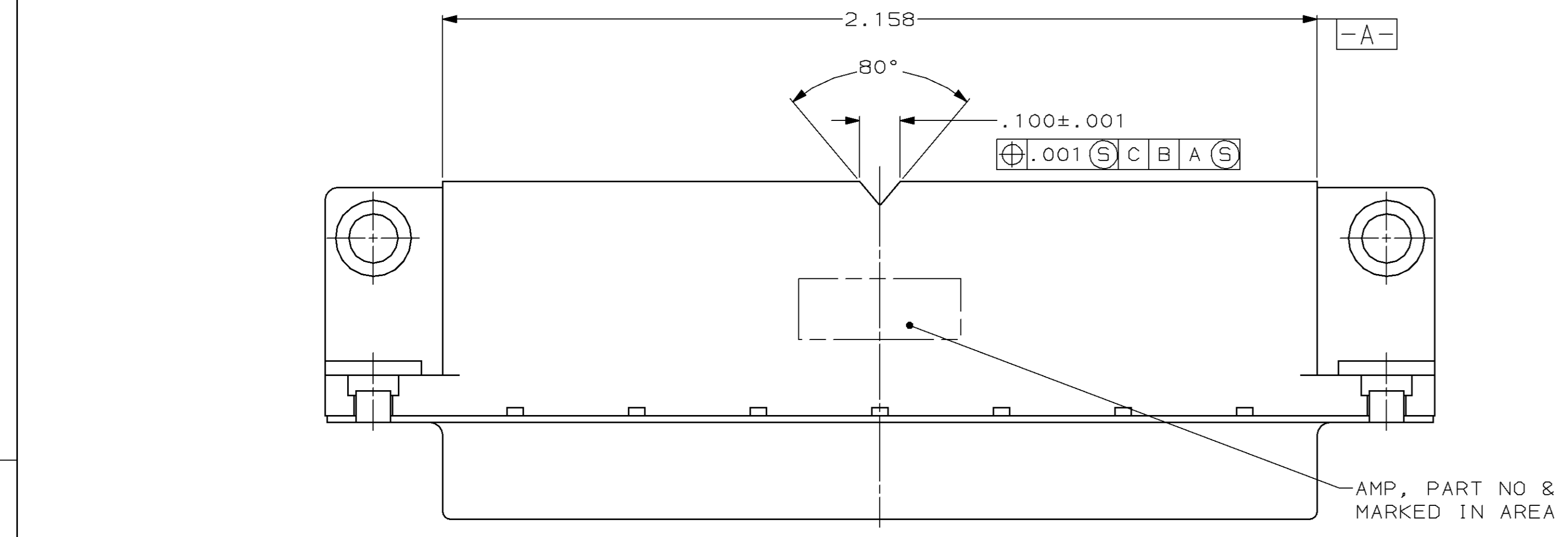


| LOC | DIST | REV | ZONE | LTR | DESCRIPTION | DATE | APPD |
|-----|------|-----|------|-----|--|-----------|-------|
| BD | 77 | P | | | | | |
| | | D | | | REV & REDRAWN ECN-2096 | - | - |
| | | E | | | REVISED ECN-2338 | 7-22-88 | CR PK |
| | | F | | | REVISED ECN-BD2359 | 9-2-88 | MG |
| | | G | | | REVISED ECN-BD2613 | 11-11-88 | PAK |
| | | H | | | REVISED ECN-BD2693 | 1-12-88 | PAK |
| | | J | | | REVISED ECN-BD2883 | 2-26-88 | PAK |
| | | K | | | REVISED ECN-BD3020 | 6-20-89 | PAK |
| | | L | | | REVISED ECN-BD3236 | 8-15-89 | PAK |
| | | M | | | REVISED ECN-BD3207 | 8-28-89 | PAK |
| | | N | | | REVISED ECN-BD3354 & BD3436 | 10-12-89 | PAK |
| | | P | | | ADDED 2-0 PER NPR 2506 | 1/4/90 | PAK |
| | | R | | | REV PER ECN BD3751 | 03/26/90 | PAK |
| | | S | | | REACTIVATED -4 PER ECN BD3919 | 05/01/90 | PAK |
| | | T | | | REV PER ECN BD4960 | 6-19-91 | CR |
| | | U | | | REVISED PER ECN BD5477 | 01/22/92 | CR |
| | | V | | | REVISED PER ECN BD6143 | 04/28/92 | SWB |
| | | W | | | SUPSD -4 PER EC 0020-968-93 | 04/24/94 | CR |
| | | Y | | | REV PER EC 0020-849-94 | 08/15/94 | MP |
| | | Z | | | SUPSD 2--0 PER EC 0020-0406-95 | 11 AUG 95 | DB |
| | | AA | | | ADDED 2--1 AND 2--2 PER EC 0020-872-95 | 22 AUG 95 | DB |
| | | AB | | | SUPSD -11, -14, -15, -19, -21 -22 & OBS -20 PER EC 0020-493-96 | 14 JAN 97 | RT |



P.C. BOARD MOUNTING DIMENSIONS
 (.062 PC BOARD THICKNESS FOR SOLDERABLE EYELETS & BOARDLOCKS)
 (.093 MAX PC BOARD THICKNESS WITHOUT SOLDERABLE EYELETS & BOARDLOCKS)

- 1 POSITION TOLERANCE APPLIES AT TIP ONLY.
- 2 NYLON, 94 V-0 RATED, BLACK.
- 3 PHOSPHOR BRONZE PER QQ-B-750.
- 4 CARBON STEEL PER ASTM A109.
- 5 FLAT EYELETS & SOLDERABLE EYELETS: BRASS; BOARDLOCKS: COPPER ALLOY; INSERTS & SCREWLOCKS: ZINC.
- 6 GOLD PLATING PER MIL-G-45204, NICKEL PLATING PER QQ-N-290, TIN PLATING PER MIL-T-10727.
- 7 BRIGHT TIN PLATED.
- 8 FLAT EYELETS: BRIGHT TIN PLATED; SOLDERABLE EYELETS & BOARDLOCKS: TIN-LEAD PLATED; SCREWLOCKS: CLEAR CHROMATE; INSERTS: CLEAR CHROMATE.
- 9 POSITION TOLERANCE APPLIES TO .125 DIA HOLE OR TO DIAMETER ESTABLISHED BY LEGS OF BOARDLOCK.
- 10 PLATED WITH GOLD (SEE TABLE FOR THICKNESS) ON MATING END, .000120 MIN TIN-LEAD ON SOLDER END, ALL OVER .000050 MIN NICKEL.
- 11 POSITION NUMBERS SHOWN FOR REFERENCE ONLY.
- 12 THIS CONNECTOR IS RATED TO A TEMPERATURE OF 220° C MAX AND 90 SECOND MAXIMUM EXPOSURE TIME.

| REVISION | DESCRIPTION | DATE | APPD |
|------------------------|-------------|---------------|------------|
| SUPERSEDED BY 748394-5 | TUBES | .125 DIA HOLE | DETAIL H |
| SUPERSEDED BY 748394-5 | TUBES | DETAIL K | DETAIL H |
| | | .125 DIA HOLE | DETAIL H |
| | | FLASH | 2-748394-0 |
| SUPERSEDED BY 748394-5 | TRAYS | .125 DIA HOLE | DETAIL H |
| | | DETAIL L | DETAIL G |
| SUPERSEDED BY 748394-5 | | DETAIL L | DETAIL H |
| SUPERSEDED BY 748394-5 | | DETAIL K | DETAIL H |
| SUPERSEDED BY 748394-5 | | DETAIL K | DETAIL G |
| | TRAYS | DETAIL K | DETAIL H |
| SUPERSEDED BY 748394-5 | | DETAIL K | .125 DIA |

| DO NOT SCALE PRINT. UNLESS SPECIFIED DIMENSIONS IN INCHES TOLERANCES ON: | DR 1-27-88 C.RICHARD | AMP INCORPORATED Harrisburg, Pa. 17105 |
|--|--------------------------|--|
| 2 PLC DEC ± .005 | CHK 1-29-88 S.WELDON | NAME |
| ANGLES ± 2° | APPD 1-29-88 P.KISSINGER | |
| MATERIAL MOLDED PARTS: | APPD 2-1-88 C.RHODE | PRODUCT SPEC 108-1092 |
| CONTACTS: △ | | |
| SHELL: △ | | APPLICATION SPEC 114-40021 |
| HARDWARE: △ | | SIZE D |
| FINISH: △ | | FSCM NO 00779 |
| CONTACTS: △ | | DRAWING NO 748394 |
| SHELL: △ | | SCALE 4:1 |
| HARDWARE: △ | | SHEET 1 OF 1 |

RECEPTACLE ASSY, SIZE 4, 62 POSN, RIGHT ANGLE, FRONT METAL SHELL, AMPLIMITE® HD-22