

FEATURES

- Light, sturdy, and transportable for top-level performance.
- Maximum Durability thanks to specific anti-corrosion treatment, protective against the atmospheric agents
- Pedal Operated
- Double stage for a very low effort on the lever and an increased efficiency
- Significant reduction of fatigue during operations
- Double effect cylinder compatibility
- Maximum Working Pressure 700 bar
- Made in Italy

RS PRO Portable Hydraulic Pedal Operated Pump

RS Stock No.: 0309334



RS Professionally Approved Products bring to you professional quality parts across all product categories. Our product range has been tested by engineers and provides a comparable quality to the leading brands without paying a premium price.

Product Description

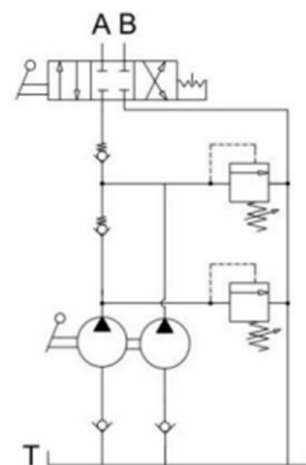
RS PRO is light, sturdy, and transportable for top-level performance and max durability thanks to specific anti-corrosion treatments, protective against the atmospheric agents.

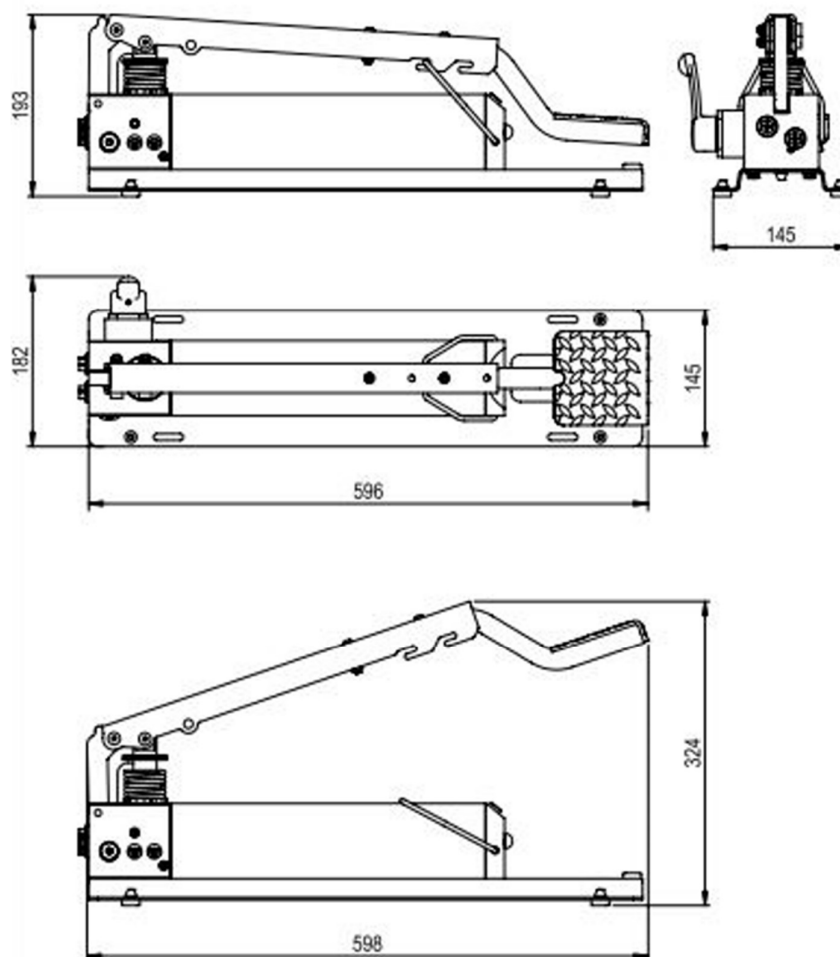
Applications: Industrial tools, lifting systems, garages, hobby, emergency, clamping systems, hydraulic equipment, crimper.

- Pedal operated.
- Double stage for a very low effort on the lever and an increased efficiency
- Significant reduction of fatigue during operations
- Steel construction for maximum strength and durability
- Lightweight and compact
- Double effect cylinder compatibility
- 4/3-way hand valve included.
- Compact and sturdy construction for heavy duty
- It does not require any pneumatic network, compressors, or any other devices for operation.
- Easy to handle and transport.
- Versatile use in both horizontal & vertical positions
- Working pressures up to 1.000bar
- Externally adjustable safety valves to protect against overloads.
- Slide with slots for perfect stability and easy installation onto the application.
- Light weight and overall dimensions.

Specifications

Maximum Operating Pressure	700 bar
Single/Two Speed	Double
Usable Oil Capacity	1,400 cm ³
Oil Port	3/8" NPT
Cylinder Stroke	24 mm
Displacement per Stroke 1st Stage	11.8 cm ³
Displacement per Stroke 2nd Stage	1.9 cm ³
Max Force	43 kg
Dimensions	598 x 182 x 193 mm
Weight	8.9 kg
Height	193 mm
Width	182 mm
Length	598 mm
Dimensions (Packed product)	640 x 190 x 200 mm
Outlet Type	NPT 3/8"



Drawings**Additional Information**

Please note this is individual pump, no accessories included.

Please review our RS PRO Hydraulic Hand Pump Guide to see whole Range & Accessories available.