



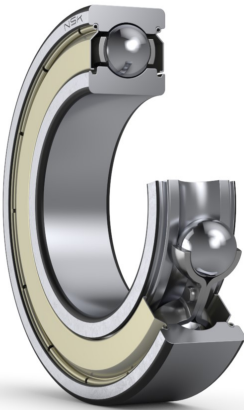
PRODUCT DATASHEET

Datasheet creation date: 2025/07/08 2:30 (UTC)



6801ZZ

Single-Row Deep Groove Ball Bearings



Boundary Dimensions

d	12	mm	Bore diameter
D	21	mm	Outside diameter
B	5	mm	Width
r (min.)	0.3	mm	Chamfer dimension

Basic Load Ratings

Cr	2110	N	Basic dynamic load rating
C0r	1040	N	Basic static load rating

Speeds

Grease	32000	min-1	Grease lubrication
--------	-------	-------	--------------------

Abutment and Fillet Dimensions

da (min.)	14	mm	Diameter of shaft abutment
da (max.)	14	mm	Diameter of shaft abutment
Da (max.)	19	mm	Diameter of housing abutment
ra (max.)	0.3	mm	Radius of shaft or housing fillet

Calculation factors

fo	15.3		Factor
----	------	--	--------

Additional information

z	12		Number of Balls
Dw	2.381	mm	Ball Diameter

Mass

Mass approx.	0.006	kg	Mass approx.
--------------	-------	----	--------------

