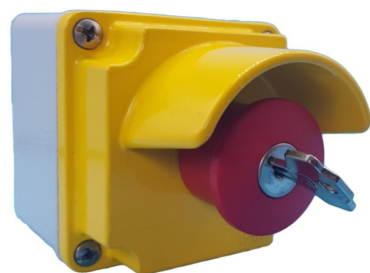
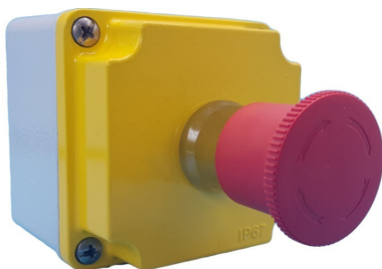


# LPZM... CONTROL STATIONS DATASHEET



| Order Code | Description  |
|------------|--|
| LPZM1B5P01 | Metalclad Emergency Stop with Shroud, Twist Reset, 1NC |
| LPZM1B501  | Metalclad Emergency Stop, Twist Reset, 1NC             |
| LPZM1B5P02 | Metalclad Emergency Stop with Shroud, Key Reset, 1NC   |
| LPZM1B502  | Metalclad Emergency Stop, Key Reset, 1NC               |
| LPZM1B801  | Metalclad Station, One Green Flush Operator, 1NO       |
| LPZM1B802  | Metalclad Station, One Red Flush Operator, 1NC         |
| LPZM2B801  | Metalclad Station, 1NO Green Flush, 1NC Red Extended   |

### General characteristics

Enclosures made of aluminium alloy suitable for pushbuttons, selector switches and pilot lights Platinum and 8LM series. The enclosures are supplied without any holes on the cover and on the base (no cable entry). Maximum 3 contacts for operator (with mounting adapter) mounted on the cover.

### Operational characteristics

- Degree of protection:
  - IEC/EN: IP66 and IP67
  - UL: NEMA 4X
- Earth connection through threaded holes on the base and on the cover (screws supplied)
- Ambient conditions:
  - Operating temperature: -25...+70°C
  - Storage temperature: -40...+85°C.

### Certifications and compliance

Certifications pending: cULus.  
Compliant with standards: IEC/EN 60947-5-1.

