

Lamp Current (A): 4.2A

Ignitor Voltage: 2.8-4.5KV

Luminaire Rating: Enclosed

Burning Position: Universal

HIT 400W/U/LU/4K

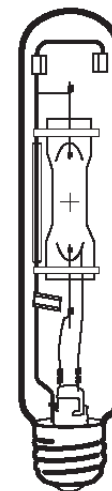
Product Number: 98748

Lamp Type: White-Lux Plus

Control Gear: HPS Ballast + Ignitor

Performance Data

Light Output (Lumens @ 100 hours)	36000V / 32400H
Lamp Lumens Per Watt	90
Rated Life (Hrs. @ 10 Hr. /Start)	20000V / 15000H
Correlated Colour Temperature (K)	4000
Chromaticity (CIE - X Y)	385, 390
Colour Rendering Index (CRI) or (Ra)	65
Typical Warm Up Time (Minutes)	3-5
Typical Hot Restart Time (Minutes)	5-10
Burning Position	Universal



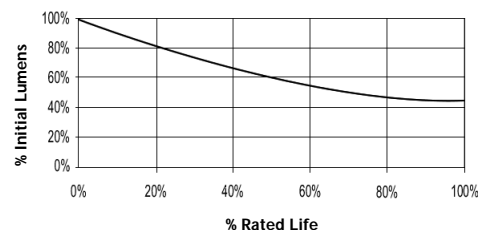
Physical Data / Requirements

Base Designation	E40
Bulb Designation	T46
Bulb Diameter (mm)	46
Max. Overall Length (mm)	285
Light Centre Length (mm)	175
Effective Arc Length (mm)	35.4
Max. Base Temperature (°C)	250
Max. Bulb Temperature (°C)	500
Luminaire Type	Enclosed
Socket Pulse Rating (KV)	4.5

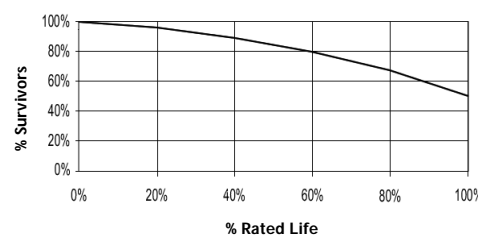
Lamp Electrical Data / Requirements

IEC Standard	-
Lamp Wattage (W)	400
Lamp Operating Voltage (V)	110
Lamp Operating Current (Amps)	4.2
Min. Open Circuit Voltage (RMS)	198
Min. - Max. Starting Pulse (Peak V)	2800-4500
Min. Pulse Width at 2500V (microseconds)	260
Min. Pulse Rate Per ½ cycle	1
Pulse Position (Electrical Degrees)	60-90

Lumen Maintenance



Lamp Mortality



Revision: 07/09/2009

Notes:

The specification contains data about typical performance on 50Hz sine wave ballast at nominal power. Actual values may depend on ballast and applications. Complies with (CE), Low Voltage (CE), WEEE and RoHS Directives.